

(e) PU LALHMINGTHANGA to move - "This Assembly resolves that the present peace talk between the Government of India and the MNF which is being unduly delayed by the Congress I Government should be successfully concluded without any more further delay."

(f) PU ZAIREMTHANGA to move - "This Assembly resolves that the liquor permits both wholesale and retail issued by the Congress I Government of Mizoram should be cancelled with immediate effect in compliance with the popular feelings of the people of Mizoram expressed through the voluntary organisations like Y.N.A, KIP/TKP and Church organisations."

(g) PU K.BIAKCHUNGNUNGA;
PI K.THANSIAMI - to move - "This Assembly resolves that water supply by truck carriage should be distributed at all public points in the following towns namely - Aizawl, Lunglei, Lawngtlai and Saiha."

SPEAKER :

Mihring tawngte chu Lalpa
mit hmuh ah a awm a,
A kawng zawn zawn a tih
rualem sak thin,
A ma khawlabna nguin mi
suaksual chu a man eng ,
A sualna hruil zen thum in a
awm ang.

(Thufingte 8:21-22)

Question No.22, Pu Zosiama
kan ka vanj.

PU ZOSIAMA PACHUAU :

Pu Speaker, ka Stressed
Question no. 22-na ka zawt
a.

(a) The number of Non-Government High Sch ol where
the staff enjoy the triple benefit scheme.

(b) The nubor of Non-Government Middle Sch ol where
the staff enjoy the triple benefit scheme.

*PU ROKAMLOVA MINISTER:

Pu Speaker, Non-Government
High School: ah hian Triple
benefit scheme hman, an
awm ah lova.

an awm rih lo.

Ta, b-na pawh hi hman

*PU ZOSIAMA PACHUAU: Pu Speaker, zawhbelhna. 1984 Budget Session ah khon he zawnha hi zawn a ni tawh a. Kan Minister zehawm tak in a chhan dan chuan hei Triple benefit scheme hi hun reilite chhunga peih fol a, hman mai theih tur awm in a sawi a. Vawin ni thlong in hman a la ni lo niin a lang a. Asawi kha a thlak leh tang e a? Engnge a chhan? tih ka hre duh a.

Tin, Government Aided Teacher tih hming ken put tir tunhma a casual Teacher kan tih te hian, thla 8 lai hlawh an la te love. Engnge a chhan?

SPEAKER: A va relevant awm love. Chutianga Education a nih vang ngawt chuan.

*PU ROKAMLOVA MINISTER: Pu Speaker, 1984 kha Triple benefit scheme thu kha sawi a ni tawh a. Whatih lai kha in buatsaih ne pawh a kal reng a. Hmun tin an school tin te inbuatsaih tura tih a ni a. Chumi ah chuan an post neih zawn zawn te kha permanent an siam vok phawt a, chutah chuan probationary period an zawn hnu ah, an mahni kha tih ngawh a ngui a. Chumi an tih ngawh hnu ah chuan Triple benefit scheme hi hman theih tura tih a ni a.

Chutiang chuan instruction pawh Headmaster tinto hnenah thawn a ni a. An hawh-chu chumi chhanna chu kan hmu fumfo love. Chutih lai chuan thil pekhat tih tul Mizoram in a la neih a ni leh a awm a. Chu chu Mizoram School Education Act ho kan lo la nei love. Tin, a Rules chu a zawn tu tum a ni a. Chumi lam ah chuan Headmaster ten chhanna an dawn neih kim theih leh hnu ah chuan tenah chuan kan kal a. Bill leh Rules chu kan peih chiah chiah a. Kan hiah chhung vol kha helai ah Law ah to, Finance ah to kan kal tip mek a. Tin, Law Department pawh in Central ah min put thlaksak an tum a. Tun pathian ni dawh hawhcan ah emaw hian kal an tum nghe nghe awm a. Chuta kan thawn hman chuan tuntum ah pawh hian put leh kan la in beisei a.

Ameherawhchu a tlai ta hle a, a tawi zawn a kan chhanna chu - he mi Triple benefit scheme hi tenah chuan thil blui ang lek lek in State dangah chuan an ngai tawh a. He an pension na tur te, Reimbursement tih thlong hian sorakar in an counter pass in, an hlowh ong a pekna state to a lo awm tan ta bowk a. Chung ang chuan ti va turin tunah kan in buatsaih a. A lehka lam chu kan peih chiah.

chiah a ni. Chuvang chuan Triple benefit scheme hi 1984 khan lo sawi tawh mah ilangin, a dia the zawk neih theih thuai kan in beisui a.

Tin, nichina a chhanna pakhat leh kha chu tunch chuan ka inbuatsaih love, a chhan tak ka sawi thei love. Ka lawm a.

*PU ZOSIAMA PACHUAU: Pu Speaker, chhan theih mai awm tak a ni. Min thia 8 lai hlawh la tawh lo, a chhan Minister in a la hre lo tlat mai hi a venduai thiek hle in ka hria.

Tuna thia 8 hlawh la lo he hi Rs.300/- in kan sorkar hian a chhawn nian a lang a. He mite hlawh hi, ong Financial Rules hmang in ngo kan sek ? tih hi a inbuatsaih leh avangin min chhong thoi dawn ngo dawn lo. Pu Speaker, kan dil lo a.

SPEAKER : Khalem kha a in relevant lo, ka phal tawh lo khalem kha chu. Question no.23 Pu Lalhmingshanga i ka lang u.

*PU LALHMINGTHANGA: Pu Speaker, ka zawnna 23-na a&b in ka dan a. Minister incharge chhan hre ka zawn e.

(a) Whether Government is aware that there is no equitable distribution of water to the pipe water connection holders?

(b) If so, why Government has not taken any measure to remove the disparity?

PU SAINGHAKA MINISTER: Pu Speaker, Started Question 23 (a)-ma kha a chhanna hetiang hi a ni. Hria e tih a ni a.

Tin, b-na chhanna erawh chu Department level ah leh Government level ah chuan, hemi tuisem chungchang ah thil rual lo awm hi, a rual thei ong ber a sem turin hnathawh chhch mek zel a ni. Ameharawhchu hemi tuisem chungchang ah hian Department pawh in harsatna a neih ve chu - hemi private water connection neitute hi an tom them tawh a Aizawl

ah te, Lunglei ah te, kan pipe water supply hrim hrim pheih hi chuan a zo ta lo reng reng a. Chuvangin truck hmanga kan sam pawh hian duh ang tawk truck ta pawh sum leh pai te harsatna avang emaw, tin, a truck hmuh hloih theih lo avang te pawh in duh ang tawk in kan ti thei lova. Engpawhnisalong hong private connection seitute a rual tlang thei ang ber a tui an hmuh theihna tur hi chuan theihtawp in tan a la ve mek zel a. Chumi ti hlawhtling tur chuan Department hctu hrang hrang ta, tin, Executive Engineer kut thlengin hong ah hian meeting leh thil dangta buatsaih in hami tui harsat zuol lai pheih chuan, chok zawk a hne thawk tur a nrilh reng on ni a. Duhthu crwhchu a la sam thei lo tih chu Department pawh kan la ngaituah khawp ang.

*PU LALHMINTHANGA:

Pu Speaker, Ni a, kan Minister rawn sawi kha pipe connection hi gravitation

system a kal a nih avangin ang khat tak a pak pawh a her viar ang tih chu a zuk hriat theih a. Amaherawhchu serkar in a lo tih thin dan ah khon, fur lai chuan hei chu a harsa vak lova. Amaherawhchu thal lai hi a harsat hun lai a ni bar a, tui pawh a lo tlem a. Khat pipe connection seitute kha tui tlem avanga in rual tlang a pak theih leh kha truck atangin zuk substitute a ni thin a. Chu chu kumin ah te hian in khatianga substitute kha a awm lo niin pipe connection holder sam tak hian an sawi a. Chu chu serkar in an hria ah? Substitute tur chuan an tingei niin a lang a, kan Minister zahawm tak in a rawn sawi ah pawh khon.

Tin, chubakch hiazal ah hian a biktakin Motor tui chawi ang a kal si, motor 4 (pali) chawh si lova Bill la thin a awm tih hi a lik em? Serkarin a hria em? Tin, a lo hre lo a nih chuan vawin a ka sawi chhuah hi information a la in, chumi chu an chian a tum ang em? tih ka zawt leh a.

PU SAINGHAKA MINISTER:

Pu Speaker, tuna a zawnna kha truck pali, bill la, mahse tui chawi silo tih

kha kan lo hre hauh lova, Serkar chuan. Hei tui supply hrim hrim a hi mumberte pawh in min hriat-pui tha in ka ring a. Nikum lam ah te khon tlang atanga kan tui pump hi Laipuitlang ah te pawh feet 5 emaw lek a tling thin a. Kumin chu tlem in a tha zawk deuh hlok niin kan hria a. Feet 12 te pawh a tling ve thei a. Chuti chung chuan kan indaih lo em em a. Khami supplement na tur khon tunch hian Department lam atanga tui chawi ang a motor kan nuahman a chu 35 - a nia. Mahselang chumi zinga 9 chuan then accident avangte in leh a then chuan a rate a tha tawk loh a ni mai thei. Buhfai phurh te a rate tunlai in a lo tha deuh hlok a.

Chuvangchuan min banson ri-
ngawt nghe nghe a. Chung he chungah pawh action lak
tur in thil kan ti chhe a. Tiang chuan in khami
4/9 to kha an nih mai leh chuan, tuna zawha specific
tak a an rawn sawi kha chu kan hre lava. Anaharawhohk
tunah member zahawm tak in a rawn sawi ang kha, hei
hi chu kan lo en zui ang.

*PU ZOSIAMA PACHUAD: Pu Speaker, pakua zinga a
bang leh ta he zing a ni ni
lo kha pali an aum a. Chu
chu in hriat aton leh action kha a lak vat theih ang
em? tih Minister ka zawt a.

PU R. LALAWIA: Pu Speaker, zawhselha. In-
formation putata kha an pek
si leh chuan serkar tan zawn
chhuah a va har duhawm va? An information pekna atang
a number hriattir theih dan a awm lawm ni? Mipui tan
a pawimawh em mai a.

PU SAINGHAKA MINISTER: Pu Speaker, Ni a, hemi a
trucknumber tih ka chu kha
member tan an rawn ti chhuak
tawh a. Serkar tan pawh zawn chhuah a har chuan, lo
vang a. A chhan chu Department in a a engage truck to
kha chu a neitute non hriate a ni ang a. Anhselha, ka
sawi ang kha kan lo en ang a.

Tin, members dang in a rawn
zawha record brake leh brake leh chungchan, thu ah
chuan, chanchinbu Newspaper in an lo chhuah chu an
chhuah a ni mai a. Government siam a ni lava, Govern-
ment atanga Press Release siam a ni lava, an mahni
information collect dan a ni mai ang a. Mahse ka sawi
ang kha in heng Aizawl Water Supply scheme to hi chu
tun a kan hman mek a ni mi 20,000 lak tana siam kha a
ni reng reng a. Tunah 80,000 chuang mihring kan lo awm
tawh a. Ka sawi ang in connection neitute pawh tam tk
an lo ni tawh a. Government building pawh atam tawh
a.

Tiang kha kan requirement
hi chu kan meet pha lo em em a. Hemi kan meet phak
leh avang hian tunhma atangin he water supply ti
phuisui tur zawng hian hna te pawh thawh tan a ni a.
Tunah chak tek in a kal a. Department in a tum ang
leh a beisei ang pheih chuan he kan water supply scheme
hi first phase hi chu June thla vel chuan kan ti thei
tawh dawn lawm ni tiin target chu kan siam a ni a.

Tin, khami Sepacific Question pakhat kumin chhungsh record brake an tih khin chu record a brake emaw brake le emaw, tunhma ai chuan improvement chu a awm deuh hlek a, hatah hian kumin chuan nikum ta ai chuan chu chu kan sawi theih tawk a ni e.

PU J. THANGHUAMA: Pu Speaker, Truck number kha lo hmuhchhuah pawh nise, kan chawia an lo ti vak mai dawn a. Chuvang chuan a Truck number kan hriat kha House-ah hian punan lan nisela. Thudik chu kan hriat a dik in ka hria.

*PU LALHMINGTHANGA: Pu Speaker, kan Minister-in kha kha a rawn sawi tawh a. Keimah a nia Truck pali hetiang hian chawia lovin Bill an la a hriat a ni tih kha. Mahse tah hian in sawi ka tum lo a number kha. A tul pawh ka ti bawk lo, kan surkar in kha kha a an dawn a, zawnha chhang tur pawh ka ni lo.

SPEAKER: Question No. 24 Pu Zairemthanga kan ka ang.

PU ZAIREMTHANGA: Pu Speaker, ka zawnha Starred Question 24-na ka zawt a.

The facilities entitled to The Chairman of Government undertaking bodies like MIZOFED and Apex Bank.

PU R. THANGLIANA MINISTER: Pu Speaker, MIZOFED ah chuan an Chairman in Honorarium Rs.800/- a hmu a. Tin, chubakah Vehicle an pe a P.O.L ta non. Tin TA/DA MIZOFED pawimawh a an zinna leh ah chuan MLA ta hmuah ang an pe a.

Tin, Apex Bank ah chuan Honorarium an ti ve lova, Conveyance allowance an ti a. Rs.800/- an pe ve a. Tin, Vehicle leh P.O.L an tum bawk a. TA/DA hi Rs.75/- nikhat an duty in an pe a. Tin, chubakah Sitting Allowance an ti leh a. Board of Director thutkhawm ah khaw Rs.50/- an dawng bawk a. Chu chu an lo in pek dan a ni.

PU ZAIREMTHANGA : Pu Speaker, zawhbulhna. Apex Bank ah khaw Conveyance allowance Rs.800/- thla tin leh Vehicle ti khaw ka hria a. Tin, Conveyance allowance hi Vehicle dawngten dawn tel hi apax

Bank ni lo ah hian, hmundawng ah a awm pawh kan hre ngad lewa. Hetianga thil double benefit ti mai ilo, siam hi, sumdawng te pawh an ni a, pawisa son lo tak a awmze noi lewa khawhralna a ni mai lo maw? Hai hi an dan ah te a awm rang em ni? Hetianga dawng kowp tur hian by law te an noi in chung ah chung awm rang a ni em ni? Engtia chutianga dawn kaw; tir nga an nih tih ha min hrilhfiah leh sela.

PU R. THANGLIANGA MINISTER: Pu Speaker, Conveyance allowances nei h tawh chuan a hnan in Vehicle te an po leh chu ang lo thein a ngaih thein a. Amaherawhchu an by laws ah hian Conveyance allowance Board of Director in awm tawk a tih ang in a ngaintuh sak thei a ni ringawt mai a. A free ang rang riau mai a. Chuvang chuan in, hetiang hian a Board in pek awm an ti a ni. Chu chu an pek dan a ni mai hrilhfiah ni.

PU ZAIKEMTHANGA: Pu Speaker, Conveyance Allowance pek tur a tih tir tu chu Board of Director an ni lo maw? Executive Committee lam a ni lo maw? Tin, Conveyance allowance awm tawk an tih an po ang Executive Committee in tih na na na a, Vehicle private Vehicle ang a hman tur a hetiang Chairman a hman pek hi, Board pawh chu serkar hian ti dik in an hre rang em ni?

*PU LALHMINGTHANGA: Pu Speaker, zawhbelhna. Ni a, a by laws kha kan Minister khon a zuk a tawh deuh hlek in a lang a. By law a a awmze chuan kha conveyance turin Vehicle leh P.O.L an pek leh lai a hman tur atana tih ni awm in a lang a. Mahsala Chairman hnench Vehicle leh P.O.L non lam a pek a nih hnu chuan, khani by law a mi kha zuk hman khon tur tih the a imply chuang in a lang lewa.

Tin, a lo imply that a, chuvangin chutianga a Board in emaw a Executive in emaw a tih an la rilruk phei chuan, kha by laws kha siam that thuai a tul dawn tihna a ni a. Chuvangin heloi a thil dik lo serkar kelhman ah, dan hman dik lo a ni mai a, Conveyance tih chu kol valne tihna a niang. Vehicle naito te hnan a pek thin a ni a. A dik leh dan chu House hian a hre ngah mai ang a. Kha By laws kha siam that an tum em? Tin, vawia ah a dik leh dan House ah sawi chian a nih tawh hnu hian a engemaw zawk hi withdraw serkar in a tum em tih kan zawt belh ve bawk a ni a.

PU R. LALAWIA :

Pu Speaker, tuna an pek ang hi
P.C hunlai khan pek a ni em ?
tih ka rawn zawt hmase duh a.

Tin, a pahnhna ah chuan in
kan Chairman te hetiang an sitting allowance Rs.50/-
chauh mai tih hi planning board a mite member ringawt
pawh sitting allowance kha Rs.100/- a ni si a. Hei hi
Planning Board a mite sitting allowance zat tal hi in pe
ve thei lawm ni ? tih ka rawn zawt duh a ni. A zahthlak
riau in kahria a. MLA te ni bawk si, Chairman ni bawk
si, Planning Board Member khawimaw lai sorkar hnathawk
pension tawh te emaw aia hniam a siam tlat fo mai hi,
a inzat tal te nise a tih theih dan kawng a awm lawm ni?
kan ti tel duh bawk a.

PU R. THANGLIAN :

Pu Speaker, a hnunning ber
chu kan chhang hmase ang a.
He mi Sitting allowance tih te

leh thil deng pawh hi sorkar in a chuti zat in pe tur
a ni, an hmu tur a ni tih a awm lova. Anmahni Board
hran nei, Bye-laws nei an ni a, khata tong khan in an
mahni in awm tawk an tih ang ang an siam ve a ni ber a.

Chuvangin sorkar in a direct
a a ruat te nan chuan tehkhin theih vek a ni lova. An
ni hi sorkar in pawise grant emaw Loan in Indaw India
sorkar in a pek dan tur tih ang a pek, amahrawhchu kha-
tia anmahni tawk a inngaihtuah tlang, in rel kha an ni
a. Sorkar heng ah hian a zu in rawh thei an em lova.
Chu chu a nih avengin sorkar Board dah te nan chuan
in ang vek thei lova.

Tin, chubekah zahbelhna deng
kha Conveyance allowance tunhma in P.C hunlaiin an in
pe tawh reng em ? tih kha ka zu hre chiah lova. Mahse
tuna an hman dan chu ka sawi tawh ang kha a ni a. Tin,
hei hi Executive Committee in enghun ah pawh awm tawk
leh tha an tih ang in a duh ang ang in a rel choh ang.
Chuvang chuan an rel fel ang ang ni an hmang nain a
lang a.

Tin, member zahawm tak
Pu Lalhmingshanga zahna kha sorkar in chutiang chu tih
danglam in tum em ? Ti lo turin a tih theih em ? tih
ang chi kha, anmahni Board pawh an lo thu ve ang a.
Awm lo lutuk a nih chuan an ti tur a ni lovang a. An
mahni thu a nih na chin a awm a ni. Direct in sorkar
a inrawh lo heng ah hi chuan.

SPEAKER :

Question No. 25. A tawk
tawh. A nih leh z wha
neitu kha.

PU ZAIREMTHANGA :

Pu Speaker, tuna hrilhfiahna ah khan Executive Committee in a an duh duh an hong to

hi an ti thei ang tiin an bye-law ah te a saw ti khan kan Minister khan a rawn hrilhfiah a. Amaherawhchu Executive Committee hian an tih tura Bye-law in a sawi chu, conveyance allowance chungchang chiah hi a ni a. Conveyance allowance te chu 'Conveyance allowances may be determined by the Executive Committee from time to time tih a ni a. Conveyance allowance chih chih hi a ni a. Vehicle pawh a kawh love dik tak chuan. Allowance kha a nia a zuk sawi,

Chuvang chuan tur kan Minister interprete dan kha a zau lu deuh a ni a saw ? chuvang chuan dan a hi siam that a nih loh chuan, tuna kan Chairman facility an pek dan hi a dik lo ble a ni tih sarker in a hro ta bawk a. Tih that nghal a dan siam that emaw he a dan in a sawi ang a Chairman facilities pek emaw hi tih nghal an tum em ? tih hi ka hro duh a. Chutia nih loh chuan a dik lo a ni. A hrilhfiah na te kha chu Honorarium a ni a, sawi buai tur a awm chuang love. (Speaker - Helai i zawhna chu a chiang e).

PI K. THANSIAMI :

Pu Speaker, zawhbelhna. Tun kum 2 hma lam lawk khan P.C Ministry chungkhan, Mizoram

State Co-operative Union ah khan Vice-President ka ni ve a. Chutah chuan sitting allowance hi tawhna ngai tek in kan ti a. Rs.30/- tih hi kan tih thin a ni a. Rs.50/- tih hi engtik atangin ngai ? tih ka zawt e.

Tin, chulovah P.C Ministry chungkhan in conveyance allowance a sawi avengin, chu chu Chairman in an hmu a, mahse vehicle let P.O.L an hmu la.

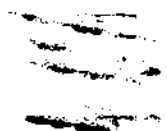
PU R.THANGLIANA MINISTER:

Pu Speaker, Pu Zairemthanga zawhbelhna kha conveyance allowance chuan a ni lawm ni?

tih kha a dik e. Amaherawhchu conveyance allowance pek tam aiah vehicle an pe ve a ni tlat mai a. Chuvangin he lai ah chuan a zau ve thei ta a ni. Vehicle kan pek loh chuan Rs.800/- ni lovin Rs.1500/- lai kan poadaw emaw ni ti zawn pawh in a ngaittuh thei a. Chuvangin anahni thu thu sei tlat mai a. Kan sawi pui thei vak lo.

SPEAKER :

Question no.25 Pu Zairemthanga kan kuvang.



PU ZAIREMTHANGA : Pu Speaker, kan han nuai liam chheva, ka Standard Question no 25-na ka zawt e.

Number of members representing various organisations etc. in the village development committee.

*PU ROKAMLOVA MINISTER: Pu Speaker, Village Development Committee hi kum 5 term atan a siam chi a kha a gwm

a. Tin, tuna Land Use Policy atana siam hi a gwm a, Village Development Committee a ni ve ve a. Tahchuan Town bik Aizawl te, Lunglai te, Grouping Centre atan ta leh khationg ni lem lo atana siam a ni gwm a. Chungah chuan vantlang aiawh atana an thlan hi chu pali (4) a ni deuh ber a. Non-Official representation hi, organisation hrang hrang aiawh atan khawpui ah chuan a President theuh a kha Village Council level ah chuan YMA te, MHP President te mention bik a hlawh a, chu chu social organisation atanga an lak a ni deuh ber mai a. Chulo chu a dang a kha non-official chu ah la thlang bowk a. Chu chu a ni deuh mai a.

PU ZAIREMTHANGA : Pu Speaker, zawhbolhna. Tun a kan zawh hi ka lo zawt Chiang lo deuh a ni mai thei a. Tunhma a C.D kan tih, Rural Development kan tih tak, hemi atanga BDO ten an rawn tih thin a kha, village in a village development committee kan tih thin tak a kha ka rawn zawh hi a ni a.

Hemi land use policy atana tih kha chu mimin khan kan Minister khan sawi dan in informed village committee tih khan a sawi tawh a. Village Development Committee nen hien ngaih fin leh tur ah ka lo ngai mai a. Hemi ah hian mipui thlan pali leh Voluntary organisation hrang hrang a President theuh ti khan kan Minister khan min rawn hrilhfiah a. Village Council lo am ni kha an tel ta lo em ni? tih te. Tin, serker hnothawk aiawh kan tih thin eng te kha- an tel ta lo -em ni? tih te kan zawt leh duh a.

PU LALHMINSTHANGA : Pu Speaker, zawhbolhna. Kan Minister khan mimin lam ah te kha a sawi tawh a. Tunch pawh kha a rawn sawi leh a. Chi hnih thingtlang khua ah kha a gwm a, a ti a. Pakhat chu, hemi village development committee ah. Pakhat chu Land Use Policy ah a ti a. Khami a formation a kha min hrilh thei am ni? Enggeni a criteria, serker in zawn tur a instruction an va pek na kha. V/C chuti

zat an ni tur a ni a, voluntary organisations representative chuti zat an niang a tih ang a Guideline a pak kha min hrilh thei em ? tih ka zawt dah a ni.

*PU ROKAMLOVA MINISTER: Pu Speaker, kan hrilh thei ang a, A sei dah hlok mai thei. A formation chu khawpui chungah V/C ah chuan V/C kha President a ni ang a. Tin, Committee in amahni zing a mi an thlan kha Vice-Chairman emaw ah sawm ang a. BDC an Block chungah mi an sawm thei bawh ang a.

Tin, an ared chungah mi kha mi pali an thlang thei ang a. Tin, YMA to MHIP to leh Social organization an sawm dah te an ni mai ang chu. An President theh an tel ang a. Tin, V/C ambar dang an tel bawh ang a. Tin, Committee hian in Prominent citizen zing a mi pali an la nominate chu BDC in a sawmsak chuan, chung chuan khawpui chungah chuan Village Development committee chuan an siam ang a.

Tin, Group Center ah chuan AD emaw BDC emaw an sawm chuan chu chu President an ni ang a. An sawm luhah ah chuan Village Council President kha Chairman a ni ang a. Tin, an sawm huan ah chuan V/C President Vice-Chairman a ni ang a. Tin, V/C kha Chairman a nihna ah chuan am-ahni zing a mi kha Vice President emaw an thlang ang a.

Tin, Village Council zing atengin mi pali member an thlang ang a. Tin, chait chu Public workers te emaw leading citizens khawpui a mi hlan leh lar dah te BDC in a nominate an a.

Tin, Secretary ah chuan Village Council Secretary a ni ang a. Chaiting chu a kalmang chu a ni a.

PU ZAIREMTHANGA : Pu Speaker, zawh huan. Tun kan Minister in a sawm sawh ang la. Village Development Committee Group Center ah to hnan an sawm hlawh a. Chung chu a dik lah an, Den ang a nih lun zie zuk sawi pawh in Department lam in action an la chuang lova. Entirgan - Sihphir ah te chuan ka bial chungah ah party aiawh an sawm lo phawt a, V/C in an keng kawh ringawt a. Voluntary organisations aiawh ah chuan Congress mi sawm chuan te an telh a ni. Chhim veng ah V/C president Congress mi an la a, Hmar veng ah YMA President Congress ni kha an la leh a. A Congress mi hlir thlan khawm kha an ni mai a.

Government Department aiauh chu an tel bawk a. Tin, chutiang chuan Sihphir ah an tih tir a. Dutiang an chuan Party representative khe Congress President chu an tel lova. V/C in an keng kawh mai a. Hutiang a in ang lo zung a tih hi a ni a.

Amherawhohu-chung chu sawi chhuah pawh in siam that a ni chueng lova. Chun, chu hotiang tunah kan Minister in a a rawn sawi kan khan khauh tek a hman a ni zel ta la em ni? Chutianga ti lo --ta kha tuna sawi chhuah chu kan pawh thah lah leh pawh in, mumal tak a report a awm in aiauh t tumna a awm em? An kal kal in kal mai rawn se tin ang aiauh hlek chhenna ang hi serkar nian tha bawk a ni mai em ni? tih kan zawt duh a ni.

*PU LALHMINGTHANGA : Pu Speaker, kan Minister zeh em tak kha a formation kha a rawn sawi ta a. Serkar hian khe formation Guideline a pak tawh hnu chun, Board an Constitute tak a kha approve leh tur a ni a. Chu chu serkar hian khawtin atan khan approval a siam ta vek nye? siam lem lovin vawin thlang hian a lo kal ta mai? tih kan zawt belh duh bawk a ni.

PU F. LALRAMLIANA : Pu Speaker, serkar in base line survey pawh tal tak in a buetsaih a. Chutiang a buetsaih tawh hnu chuan village level committee, Development committee kha neih kher a lo ngai em ni? tih ka zawt a.

*PU LALHMINGTHANGA : Pu Speaker, ka zawhna kha chumi approved lo ni ta ang song, a approve na kha Gazatted ah emaw Notice chhuah a ngai a. Member te hnen ah pawh sem a ni thin a. Entiran kha kha Housing Loan Board tih ang leh a dang ta. Chu chu a siam a hi kan la hmu ta bawk si lova. Chutiang ta chu tih loh in a la awm em ni?

*PU ROKAMLLOVA MINISTER: Pu Speaker, tuna member zeh em tak ta a dang pakhet, hang an nih dan tur ang a kal lo khua ta kha report kan lo dawng lova. Report kan dawn hun a lo ngaihtuah chhah sur nian ka zing a.

Tin, zawhna dang pakhet la awm leh kha, serkar in notification ta a siam ang a, tih ang chi kha tunhma atangin BDO level atangin kan

lo in pawm mai ni pawm in ka hria a. Chu lo chu tunah chuan helai Government level ah chuan village tin ten Committee hi pawmna leh notification hi chhuat thin a lo a ni.

Tin, chulo leh chuhulci a zawnna informal village development committee chungching ah base line survey pawm tawh hnu ah chuan a tui am ni tih kha a lon dan chum tui tawh lo ang a pawh mai theih tur a ni a. Amherawhchu- tunch high land use policy hi a thlan mai ah kha a tawp lova. Mipui tanpui tur te da, tur te, in fuhh tan tur da, kawng hrang hrang the tur te ngaintuah tur an nih avangin, mipui hnan ah motivation da, incentive da ah in zilh hauh a tui pawh a lo ti thei tur ang kha dia chu a la ngai thevin a rinawm.

SPEAKER : Question no.26. Pu Rochhunga Ralte kan ku vang.

PU ROCHHUNGA RALTE: Pu Speaker, ka zawnna Starred Question 26-na ka zawt a.

The total amount of compensation claimed in the Bairabi Hydel Project.

PU SAINGHAKA MINISTER: Pu Speaker, heni Project atana compensation bekar in pek tur awm ang a baatsaih chu Rs.11.67 lakhs a ni.

PU ROCHHUNGA RALTE : Pu Speaker, zawnalhna. Heta compensation pek tur ang a an rushman to chu, an hming list leh an compensation hmuh tur awm a rushman zat min hrih turin kan Minister ka zawt leh a.

PU SAINGHAKA MINISTER: Pu Speaker, mipui da to hming chu kan sawi mai thei lova. Heni compensation pekna tur awm a an baatsaih a chu tui hi khuch lo ni to sala, metre 100 vel thlong tui in a chia, il tur som zavng zavng neituta chu, mihring hming to tawh chuan ka sawi mai thei lo.

*PU ROCHHUNGA RALTE: Pu Speaker, hening tak a compensation tam kan zu ngenna avang hnan vaibel- chhe 11.67 hi thil na mai lo tak a ni a. Hening ang

Project turah hian Government of India hian a project a pawisa involve tur leh compensation pek tur ah hian in proportionate deuh hlek in hetiang tam lutuk chin ah chuan harsatna a awm a tih theih lovang a tih ang deuh in Guide line a nei em ? Chu chu सरकार lam ah Guide line a awm reng em ? Kan Minister hian min hriah thei em aw .

PU SAINGHAKA MINISTER: Pu Speaker, Vaibelchhe 11.67 crores z' t compensation a pek hi a tam viau mai thei a. Amaherawhchu ahutiang thlap a Guideline chu ka sawi mai thei lova. Hemi vawin ni thlang a Bairabi Hydel Project chungchang thu a thil a kal chak theih Ich na hi a compensation vang pawh ni em em lovin, hei hi member ten kan hriat tlan reng reng a the in ka hria a.

Nikum July tala a meeting kan naih khan, power Minister ho chuan, Power Department pawh khan December 1985 khan a project report hi clear mai thei tawh tur awm in an in sawi a. Mahsela environment leh Ecology Department ho kha an rawn chip chian leh ta deuh hlek a. Tiang chuan Power Department ah khan in, Forest lamang thil an tih chhiet tur te, tin, rehabilitation thil ah pawh mamawh, dan tur tih te, tin a 'Dam' full in tui lo awm te sola, chuta a submerge tur a te. Tin, metre hriah hnuailam ni ta sola, metre li (4) hnuai lam ni ta sola tih kha, a ma0 rawng zawn nen an duh thar leh deuh a. Chung chu Central authority leh Central water commission ho tuna investigation beitu NHPC ho kha an va zawt a. An ni kha kha kha an lo nei mai lova. Zoram सरकार ah an rawn zawt chhc leh a.

Tin, tun January thla khan, chuta an rawn zawh chu tunah hian kan Forest Department lam ah chuan a chhanna pah fel a ni tawh a. Hemi hi a tlaina a ni zawk ber awm mang a raw ! tih tur in a awm a. A compensation lamang thil em em pawh nin a lang lo.

*PU LALHMINGTHANGA : Pu Speaker, tuna zawhna kha zawhna the tak nin ka hria a. Hetiang Hydel Project han prepare hian entinen Borepeni kan sawi ang thin ah te khuan, A total cost a kha Vaibelchhe 250 vel a nih khan, khua an sawn zawn zawn te leh mi ram a ni nghe nghe a an, ek kha 50 crores aia tam daih a ni. Tin, entinen Bhakra Dam an siam ah te khuan Private land vek a ni a. Mizoram ang hi a ni ve lova. Government land a awm ve lova. 200 crore aia tam compensation ah an seng a ni. Tichuan helala Mizoram Bairabi Hydel Project ah crore 11.67 hi assessment a lo ni ta a. India ram a compensation

propose ah chuan a tlem ber tih hi, tlem ber zing hmi
Hydel Project ah chuan tih hi kan serkar hian a tlem
em ? tih hi ka zawt duh a ni.

PU R.LALAWIA :

Pu Speaker, zing hmi.
Hei kan Minister zing hmi tak
zing-atang to p ah in, he

Hydel Project ah hian compensation a tam lutuk a.
Pu Chawngkunga phai chu nua 100 zot mai a haw dawn
a, chuang chuan Hydel Project hi ah approve leh dawn
love tih hi kan lo hria a. Hei hi politics a inbeihna
mai mai nge ni ? Tuna kan Minister zahawa tak rawn
chhanna atang kha chuan, chutiang chu awm lem lo ang
kha chuan a sawi baw si a. In inbeihna kha veina lam
ah hian enggemaw chen ah a hlawhtling lo pah mai ang
tih a hlauhawm riau mai a. Thudik kan hria nawa leh
ka phut tlat mai. Khelai tak chhanna kha ka bang
ngaiin ka hria a Minister a ng hian atangin. Taid
pawimawh tak mai a ni a. Compensation tam lutuk awng
a siam theih leh dawn to ah in phai chuan, ah tlem
dan te a awm lawm ni ? tin kan toih baw a.

PU SAINGHAKA MINISTER :

Pu Speaker, Hei hai a Vei-
belchhe 11.67 hi Hydel pro-
ject Compensation zing ah

hian a tlem ber a ni tih hi serkar in an haw em ? tih
kher hi chu serkar in chutiang tanchim in kan lo ngai-
tush vek love. Compensation hrim hrim a hi chu a
tlanguai thu in a tul ang a ni tur kha a ni mai a. A
dik tak chuan, a dik tak a nih kha chuan, a tam emaw a
tlem emaw, angti kawng zawng mah in a project a hi a
dal chuang turah kan ngai love.

Amaher, whohti a tlem an assess
ah kha hai 11- tih hi veibelchhe 13 hai a ni rong a
ni. Mahsengin committee hrang hrang D.C te, Addl.D.C
te, tin Agriculture lam ah officer te, tin Lower lam ah
pawh officer te tin in assessment kha ah awm the leh
te a. Khatah pawh kha assessment an siam an a hi
70 metre level ah te, 80 metre level ah te 90 metre
level ah te, 100 metre level ah te kha a compensation
figure a kha a hrang ta ngai rong a. A chuan chu a
chim tur kha a tam hlawh dawn avangin. Tuna kan hon
sawi hi chu 100 metre level, tuna project report ah
an pek ang kha a ni a.

Tin, hemi chungchang thuah
kha, Khawhai biatu in a zawh ang deuh kha, mimal
compensation tam veng hrim hrim emaw ah kha chuan in,
thil hi a sukuk chuangin ka ring love. Amaher, whohti
hemi chungchang thuah hian kan sawi tawh ang hian
sawi hi a tam viaw a. Tuna serkar pawh hian thiluh
thiluh tur ta der ang a sawi hi a tam viaw a. Tuna

serkar pawh hian hemi a power project investigate tu te NHPC hovin a, an investigation an zawh tawh a, report an pek loh a, anmahni ngei hian he project a hi an take-up leh dawn em ? tih vawin ni a an hriet theih loh lai hian, khulala an building te leh engngemaw an material thenkhat te an lo tih rural a, a chhe mai mai tur chung chang ah pawh, tuna ministry hian (he serkar hian) umzui ta lova, khukhu hnuchhawn ta ang a sawi pawh a tam a ni.

Mahsela hei pawh hi thudik lo a ni a. Chuvangin member ten helai ah hian kan chian a tha khawp. Engpawhnisela hemi an project a hi chu nichina ka sawi tak ang khan hei Government lam atang chuan clarification an tih zawnzawn a kha kan thawn thla mek a. Chu chu NHPC chuan **Central** Government ah a thawn leh ang a. Chu chuan a project report an lo exam mek atana thil tangkai kha a nih avangin, enganginge a exam result kha a lo chhuah dawn tih chu kanghah leh rih tur a ni.

SPEAKER : Question no.27 Pu R.Lalawia i ka ang.

PU R. LALAWIA : Pu Speaker, ka zawhna no.27 na ka zawt e.

PU LIANSUAMA, MINISTER: Pu Speaker: Ginger Dehydration section a ur ro na khu tun March thla chung emaw a nih loh vek chuan thla leh tantirh lempang ah peih theih kan in ring a. A cil plant chin chiah erawh khu chu kumin financial year thla lo awm tur chung a in peih hman kan in beisei.

PU R. LALAWIA : Pu Speaker, zawhbelhna. Dehydration atan hian kumin **chung in Industry Department** hian Sawhthing chu lei a tum em ? Tin, lei dawn ta se, engzatnge ni ang ? Engzat rate in nge ni ang ?

PU LIANSUAMA MINISTER : Pu Speaker, hemi Project report buatsaih a nih lai khan Sawhthing quintal khat ah Rs.150/- in lei ta ile, tih anga khu project khu lo tan kha a ni a. Chuvangin kan lei thei dawn a nih chuan Rs.1.50p hi a sang thei ber a ni. Chuti a nih loh chuan a deah chhuah sa a cil emaw a Oleo-resin kha a hralh lehna tur ah khan a hlawk phak dawn loh avangin.

Tih, tunah hian Trial Run kan han nei ang a. Chumi atan chuan tlem a zawnzawn chu

lei tur in kan in buxtsaih ang a. Kan ngalikhlok tawh ang khan Sawhthing MIZOFED in a lei to thei dawn a wn a nih chuan, an hnen atang khan lei leh chhawn, ta ila. Sawhthing a sundawn, tur tehchawk kan ni a ak a. Kan hlawk mai awm mang a, a price support kha kan a awm ve tihna a ni ang a, tih chu serkar in kan ngalikhlok ask dan a ni.

*PU LALHMINGTHANGA : Pu Speaker, zawhbalhna.
Project Report ni pak kan a zirin thil a awm chhi a.
Amaherawhchi serkar in a tin ve zel thil a thil a chhi entirnan ah - nikum Budget session at ni, ta a Essential commodities ta leh Petrol ta leh chhi tam a kha a man a lo to ta a. Tin, kumin atang, awm a ta leh a, chutiang chuan a ni a. Kha a project report ni Rs.1.50/- estimate an lo siam ngawt khan, chu mi hmang thil chuan in chumi chuan lei a tum thil tihna em ni ? Khawwal kalhmang chhe ang zel a tih dan hi serkar in a tum lo em ni ? tih kan zawt duh bawk a ni.

PU R. LALAWIA : Pu Speaker, zawhbalhna.
Nichin khan ka zawhna kha a la chhang kim lava. Quintal engzatnge ni ang ? tih kha min la chhang lava.
Tin, nimin lam ta a kan hriat tawh ang khan, Agriculture Department khan subsidy aton kha Rs.1.25p kha a hmu thei dawn tihna a lo ni a. He mi Industry Department in a a lei tur ah hien, kha kha transfer ni ta sela, an lo lei ve na tur Rs. 1.50p non hien Rs.2.70p hien a lei thei mai lawm ni ? tih ka rawn zawt duh bawk a.

Tin, Sawhthing dawn tur hien pawise hi tunah hien Draw a awm tawh an ? tin ka rawn zawt duh bawk a ni.

PU LIANSUAMA MINISTER: Pu Speaker, Lunglai bieltu zawhna kan nna chhang hmase ilangin. A project report ah khan Kg ah Rs 1.50p quintal kha a lo 150/- a lei tur ang a hisap a nih lai kha, chumi atang a lo chhuak ah a cil leh Glocrosin Kg khat chuan a tum a ni ang a tih hisap a ni a. A tak tak ka hriat ta lava. Glocrosin hi litre khat ah Rs 900/- val tur hisap a ni.

Tichuan kan hriat chhuah tek tur zawk a finished product a kan lo sang ta zel sang, chutih hunch chuan a hriat lohna tur non a in mil thlap zel in kan lei dawn a ni mai. Tin, kan lei tur zat kumin chhang aton chuan a chin kan la hrechiang thei lava. Khawhai bieltu zawhna kha, Trial run tur chauh kan lo nih evangin de 1,00,000/-

men vel chauh hi chu lei chhin ila tiin kan in ruahman a. Tin, Drew tawh a nih leh nih loh chu tunah ka hre mei thei lova. Kan provision fund kan neih hma April thla vel hian, lo ti chhin thei ta ilang chuan Rs. 1,00,000/- man vel a kan lei chuan a chhinna zen zawn chu a daih ang e tiin kan in ruahman mek a ni.

SPEAKER :

Question no. 28 Pu Lalhmिंग-
thanga kan ko tawh ang.

PU LALHMINGTHANGA :

Pu Speaker, ka zawnna no 28
a & b ka zawt e.

(a) What is the total amount
of expenditure incurred by the Forests Department for
works during the period from 1st April, 1984 - 1st March
1986 ?

(b) What is the total amount
of works allotted through call of tender during this
period and what is the total expenditure of these works?

*PU C.L.RUALA MINISTER:

Pu Speaker, zawnna Starred
Question no 28-na hi, a zawt
tu khan a duh dan ang thlap

kha hriat a har deuh hlok a. Hna han tih khan kan
hna hi a tom ang reng a. Plantation work te hi hna ah
khan a kal deuh vek a. Mahsela kan han ngaihruat dan
in a Department a construction work lampang a ni thei
mai awm mang e kan ti a. Chutianga nih chuan ~~kan~~
April, 1984 - 1st March 1986 inka a expenditure Forest
Department in a neih dan chu hetiang hi a ni a. 1984 -
1985 khan Rs. 45.09 lakhs a ni a. 1985-86 kha Rs.55.00
lakhs a ni.

Tin, call of tender a hna
engzatnga thawh tir an nih ? tih kha chu 1984-85 chhung
in 24 hna a ni a. 1985-86 chhungin 97 hna a ni.

Tichuan khomi hna atang
khan chuan call of tender vek a nih avang khan amount
chu a chunga kan han sawi tak ang khan 1984-85 a
hmanzal chu Rs. 45.09 lakhs a ni a. 1985-86 ah
Rs. 55.00 lakhs a ni e.

SPEAKER :

Question no.29 Pu Ramliana
kan ko vang.

PU F.LALRAMLIANA :

Pu Speaker, ka question
no 29-na hi Industry Mi-
nister chhan atan ka zawt

...213/-

e. (a) What is the monthly expenditure for hiring private building at Chawngte (c) for craft Training Centre ?

(b) How many persons have so far been trained ?

PU LIANSUAMA MINISTER : Pu Speaker, zawhna kha Chhingtui District a Chawngte khua a Building pakhet Craft Training Centre a an luh muk hi thle tin a luhman engzatnge tih e ni a. A thle tin hi a maw Rs. 1415/- a ni.

Tin, hu Training Centre ah hian mi engzatnge trained chhuak tawh ? tih e ni a. Mi 30 in Training an zo tawh.

PU F. LALRAMLIANA : Pu Speaker, zawhna kha Chawngte ah khuan nikum ah leh kumin ah pawh ka kal a, ka zawt thin a. He Craft Training Centre ah hian mi engzatnge train tawh ? tiin. "Tumah an la train ngai lo" tiin min chhang thin a. Engtinge kan Minister khan chutiang zuzai chu train tawh a a s wi theih la ? Khu-toh a hmun ngei a kal to pawh kan awm a. Tin, a thlawn a Rs.1415/- thle tin in luhman sen si chuan in, khulni ram khu duhsak hla mah ila, duhsak tlik rih le an la nih avengin he Training Centre hi hmun dang ah sawn a rem mai zawk lo maw ? tih ka zawt nawn leh a.

PU LIANSUAMA MINISTER : Pu Speaker, hati lai a serkar a record kan neih leh information, chhingtui District a kan Industry Officer ta hnen atengte, hmun dang hrang service kan neih dan ah chuan mi 30-in an train chhuak tawh tih a ni.

Tin, hmun bran a Chhingtui District a Chawngte a kan Training Centre hi hmun dang zawk ah sawn leh ile tih kne chu ng ila ah na kan nei rih lo.

PU F. LALRAMLIANA : Pu Speaker, zawhna kha. Chung a trained chhuak tawh to hian a hmun hrih thei ngam ?

PU ZAIREMTHANGA : Pu Speaker, chhen ngai aton. Kan member zahawm tak in azuk hmun dan khati kha e ni a.

Department lam in an report submit dan khati kha e ni thung a. A khawi zawk ngo serkar in a pawm dawn ?

PU LIANSUAMA MINISTER : Pu Speaker, tunah chuan mi 30 trained chhuak tawh te kha a list ka nei mai lova. Amaherawhchu kan member in a theih hun hun ah office lampang ah rawn en turin a awm thei ang a.

Tin, a khawinge dik zawk ang tih chu, serkar chuan in official report ah kan in ngat a. Hei lai a member ten nichin ah pawh zawhna hmasa a kan ngaihthlak ang khan, truck 4 tui chawi lova Bill la reng tih te pawh kha a awm thava. Chuvangin kan rin hmasak ber tur a chu official report a ni.

SPEAKER : Awle, a hre zawk in zawh hi a ni deuh thin a. Chuvangin serkar in an en zui ang chu.

Zawhna hun a tawp a. Reslution vawiin chu kan ngah a, chuvangin kan tul viau dawn a. Tupawh tlo deuh hlek tur in kan sawm juh che u a ni. A hmasaber in Reslution Ballot a lo chhuak ang in kan kal ang a. Pakhatna Pu Biakchungnunga a ni a. A move dan tur erawhchu a rawn ziah dan kan lo Amend deuh hlek a. A ziah dan chiah khan a duhzawng a nih chuan, a move kan phal ang a. A thu tum a kha a thuhmun tho a. A mar zawk a kan hriat avangin helai ah hian kan Amend a ni.

"In view of the method in which so-called land use policy of the Government of Mizoram being implemented is detrimental to the economic welfare of the people, and the way in which financial resources pull for its implementation from various Government Departments creates great hindrance to the smooth flow of the implementation of Departmental programme, this House resolves that the policy as practised in Mizoram should be abandoned immediately" tih a ni a. Kha kha a original a ni a, hoti hian a lo ti dang lam hret a ni.

"In view of the method of implementation of the so-called Land Use Policy of the Government of Mizoram is detrimental to the Economic welfare of the people, and the way of pulling financial resources for its implementation from various Government Departments creates great hindrance to the smooth flow of the implementation of departmental programme, this House resolves that the policy and implementation of Land Use Policy as practised in Mizoram should be abandoned immediately" tih a ni a.

Mahse a duh dan chiah kha a duh zawk a nih chuan a move thei the...
...in a view of the method of implementation of the so-called Land Use Policy of the Government of Mizoram which is detrimental to the economic welfare of the people, and the way of pulling financial resources for its implementation from various Government Departments creating a great hindrance...

PU Speaker, KCHUNGNDUNG...
Grammatical construction...
Mizoram tih hnu chiah hnu chiah which is...
...in a view of the method of implementation of the so-called Land Use Policy of the Government of Mizoram which is detrimental to the economic welfare of the people, and the way of pulling financial resources for its implementation from various Government Departments creating a great hindrance...

view of the method of implementation of the so-called Land Use Policy of the Government of Mizoram which is detrimental to the economic welfare of the people, and the way of pulling financial resources for its implementation from various Government Departments creating a great hindrance...

(Speaker - 'which is the line ah i beh a, creates' tih kha 'creating' tih in maw?) Awle a pawing a dwn lovang.)

PU Speaker, k...
tur a min phalsak avangin ka lawm e. Hai kan eork in a Land Use Policy mipuite chawiken aa mipuite hnatht na siam hi a poli hle in ka hria a. A tum te kan ngaituahn inj mirethal te, mipuite chawikani...
Chu chu a tha em em a. A thate inghahin...
a hlawhtlin chla ni a. A tum thaxmhse...
chuan thea tling thei lavy. Mipui ton a...
a ni...

Tin, serkar in policy a siam reng reng in mipui that nan a ni kan ti e...
Chu chu a hlawhtlin nan tih dan a implement dan fel tak ruahman a ni bowk thin a. Tichuan a lam hi a cwisaam nan (NLUP) New Land Use Policy ti lam tawi atan NLUP tih mai theih awm nin ka hria a. He NLUP...
Pu Speaker, in powi ti lovang chu ka ti ma a.
(Speaker - a hun a chep deuh e, a zich hnu ch a chuang dawn thove, sawi mai rawh) a tum ang a a hlawhtlin chuan a tha a ni. Chu chu tuman kan the hawh lovang.

Tin, serkar in a tumna...
Juhna rilru mipui tana the tur siama lai hoi hi chu kai repui ka tiin thil thep ang tak te pawh...
ah te the ka ti mai a. Amaherawhchusen ti zangge ni ho Resolution hi put luh thial a lo ngaih tak? Kan tih chuan, hlawhtling ngel dawn a a lam ich veng a ni.
Mipui pawisa tan tak hman ni si a, a tum chuan pawh...

nise hlawhtling dawn love a lan si chuan, ho House -ah hian mumal tak a a awmdan hi kan ngaihtuah tian a, uluk tar a kan thir tlan hi thil pawimawh tak a nian ka hria a. Chuvangin kan Ruling lam a mita pawh kan ngen duh nghe nghe a. Hetah hian chuan in hawng sak-in min lo thir sak ka duh hle.

Tichuan he ka Resolution hi...
mit pass pui ngei pawh, mipui leh serkar tan pawh thil thi ni a ka rin-avangin ka hon ngen nghal Lawk a ni.

A hmassin hetiang ang policy tilawhtling tur hian engngotul ? tichuan kan hre theuh ma a. A implement dan fel tak a ruahmanna a awm ngei ngai tur a ni a. Tin, chh ruahmanna chu a hlawhtlinna ngai tur a ruahmanna a nih tawh avangin dik tak a hman bak tur a ni.

Tin, policy lian tham pawiso makaduai, vaibethhe tel a hmanna tur reng reng chu uluk a ngai a. Survey te pawh mumal tak a tih tur a ni a. Hetiang ang tha tak a survey a, a nihna Chiangkung tak a awm tur chuan kum 2/3 te a duh thei hial in kasing nghe nghe a.

Tin, a hmu tur a te a beneficiaries kha a thlan dan hi a tha bawh tur a ni a. A dik tur a ni bawh a. Tin, hetiang ang plan lian policy lian chu Planning Commission te pawh hian min hristpui sold, mumal tak in min plan pui ang a, min phalsak ang a, pawiso pawh min po tur a ni. Heng hi a hlawhtlinna atan chuan thil pawimawh han sawi mai theih hun tawite karah a ni a. Chutiang ang chuan leh serkar chuan a detail in thil chhut chhuak a nihna lai ah, ruahmanna dang dang te pawh thil awm thei a ni ang a.

Mahse a tlangpuiin a hlawhtling tur atna tul tlem ka han tarlang a ni a. Heng ah mai pawh hian hlawhtling lo mai tur ang a a lan theihna chu a implement na tura ruahmanna siam hi a fel tawh lo phawt a ni. Chu chu No.1 - ah.

Tin, hei Council of Ministers hian vawi engngemaw zat thukhawm in uluk tak in an ngaihtuah a. An thu tih tluk te pawh chhian theih a ni a. Hei ka chhian ka chhian mai a. Hetiang thil ropui tak fam chu, tangkai theihna te kan nai ve mahna tiin ka chhian ngun ve hle a. Hetah hian in a tih dan tur, thil tha hmu tur a a thawh dan tur kha, leh tih tur leh tih loh tur te pawh a zu sawi zel a. Mipui lam in an lo dawn sawn dan tur te pawh a in ziak ngai a.

Amherawhchh a tha tawh lo phawt mai a ni. Thil Chiang lo ngaihpawh theih mai mai a tam a. Entiran - survey na leh mimal hnena ram ve

dek a kha, mipui concern te nen a thawhpui a, hrietpui ra a tih tur a niang. Khatiang te kha mihausa zeuk te cru heng ah hian tel loh tur zeuk han tih te kha a chiang nial love. Hausa kan tih hi eng ang zat nei nga sith te pawh kha define loh pheii chuan a buathlak khawp in a. Kan rethei vek a laum han tih pawh hien a dik loh mai si a. Mizo zingah thingtiang khua te phoi chu tunch hrisar reng kan awm lo. Mirothei thukhaum kan ni han tih chuan in a dik mai a.

Mahee thenkhat thlie dan ah chuar, 'An ni chu mi hausa an nie laum' tih chu dan nei ve lan si a. Engpawh nise an ruahmanna ang hi the tark lo marselangin, ruahmanna awm ang ang a hlawhtlinna tura stric; tak in kengkawh sela tih kha a pawimuh em em lair kha kha kenkawh a ni ta love. Tin, a dik lohna leh pakhat chu formal village committee han tih tur ni awm te kha Informal village committee an tih. Informal a nih kha chuan sorkar in a ngaihtuah thei ang em? tih zawh theih tak a ni a. Informal committee thuknaum ve mai mai ho in a heng hi tih tur a ni an tih ang te khava va rooi vak awm love. Chu chu committee din chhahna vel an kha in nghahna tak mai a ni a. Informal tih ngawt pawh kha a fel lo nghal a. Formal tih zeuk turte a ni em?

Tin, khatiang a lo nih pawh khan, kha committee recommend na hnathawk tur a raun thlan kha committee kha a function mumal lo em em a, a function mumal ve deuh a tuna an raun thlan ve a pawh kha hela ah pawm an ni leh bauk si love. A sawi chu ka sawi love. Pawm an ni vek lo tih erahon ka sawi duh a, a chiang em em a ni.

Chuti a nih chuan village committee pawh kha sorkar Cabinet meeting mawh in a ngaihtuah a, kha committee thu pawh leh tur ang a awm kha a hlawhtlinna tur ruahmanna ah a dik ta lo phawt a. Chu chu entirna ka nei thei a. Kan Minister zehawm tak pawh hun remchang ah han kawhmuh pawh ka duh in ka chak viau a. Heta House ah hian a detail sawi pawh a tul hran lo mei thei a.

Tiang chuan hei hi chu thil chiang a ni a. Committee village level a an pawm a nih loh hi entirna tam tak entir tur a awm a. Chu chu thil chiang tak a ni.

Tin, Council of Ministers thukhaum rel ang kha chuan, chu committee chuan a ngaihtuah ang a, D.C ah a lut ang a, D.C atangin Rural Development Department ah a lut ang a, chutah Minister ah a chho tur niaum tak a ni a. Amaherawchu hetah hian village committee level in an raun tih ang kha D.C a lo lut chu pawm chuang lo khan, nimin lan in kan

Minister zahawm tak in a sawi ang in, Base line survey atang te in a ti a. Base line survey tih kha ho MLSP atan hian base line survey a awm lo reng reng. Awm lo atanga an la chhuak pawh hi a dik lo a ni. Kha survey kha chu IRDP atan ~~Base~~ liaw a tih a ni. Vawikhat an ti a, a chiang lo an ti a. An ti loh a, kan nriat thuh ang in he survey hi chu tunge below poverty line a awm tih identify na a ni mai a, leh Land Use Policy hi inleichin theihna an nei lo reng reng. Nei si lova khata mi daih base line survey a mi thlang a, village level a thlangna pawm si lova han siam ve leh te chu a dik thei lo reng reng a ni. A thlang tu chu Minister a nih pawh a chiang a. A kar lak ah tuman an khawih lo. Chu chu Council of Minister in rem a ti lo reng reng, sorkar in rem a ti lo reng reng. Kha kha a chiang lutuk.

Tin, Base line survey a mi kha thil dang daih a mi an hman a nih dawn rau rau chuan, engahngae Electoral Roll a mi pawh an hman mai loh? An in daih lo deuh a nih chuan Electoral Roll ah pawh a tam a lawm. Kha kha ka ngai thei lo om om mai a. Sorkar in ruahmanna fel tak a neih ang lova han tih lai tak mai kha paw ka ti a Pu Spoker. Hei hi kan House zahawm tak hian chiang tak a an nriat a pawimawh hlo a ni. Chu chu sorkar ruahman lohna ang a thil kal a ni zel a. A hlawhtlin loh mai theihna chhan tur a kha, hei hian a hriin chu chiang tak in hming list pawh a pak theih vek a ni a.

Chuvangin unau in tlar ta mai mai, party hming sawi rik chu ka duh lo reng reng. Ka thahnem ngaih ve na a ni a. Engngemaw pawl hatupa in heng hi ni rawh se an tih, helai a village level committee thlan pawm tawh baw ka si lo a, kan Minister zahawm tak in emaw a lo pawm mai mai a nih kha chuan, heng thil hi a awm thei awm mango ka ti a. A ti tnoi pa in an sawi chu, a farnu pathum to pasal thuh atangin an tan phrut a. A pa unau a fa te ah an zawn leh a, a ni fate ah an kal leh a. Chu chu thudik a ni tlat a ni. A bak kha chu kan pawl ah a tui vekha, chulovah nimin tlai ah khan chingit min rawn pe a. Kan tih ve ang a. Kha kha a ni. Hei hi a tak tak zel a nia ka sawi, nuin nan a ni lo.

Chuvangin hei hi a lo thlang tlat mai a, a thlon theih na chhan chu helai ah village level committee recommend na la si lova, a cheng leh Minister in emaw, tuin emaw ka hre lova. Hei hi a thlangna a lo siam kha a fel ta lo em a. Chuvangin a beneficiaries thlan dan a hi tha tur a kan sawi kha a tha thei lo reng reng. Khang hnawl baw ka si awm a fel thei ta lova. Chuvangin chungkua liana in subsekna kan tih kha, hman dough session tantirh a ka sawi kha a dik tak tak a ni a. Hei hi sorkar in a tum dan a nih ka ring thei lo a ni. He kan sorkar hian mipui

thatna tur atan a tih ah hian, khawi khua ah awa chung-
khat invulh nan hei hi in phal ka ring lo a, kan phal tur
pawh a ni hek lo a ni.

Tin, a thlan dan pawh hi a
uniform lo em em mai tih chu a hriat leh thei a. Block-
wise a han thliir reng reng hian Lungdar 'E' to chu an vui
chuk mai a. Thingdawl tih te, Khawzawl tih te, Aibawk
tih chu a tlem loh lutuk lawi si a. Hengte pawh hi kan
ram thingtlang Zokhaw lam a kan unau te retheih dan han
en hian, khawimaw lai ah hian retheihna a zuai ta deuh
em ni? Helai ah hian a hluar lo deuh em ni? Heng a
distribution ah te hian, Lungdar leh Chhimituipui lam te
an tla hniam loh em em a. A Block theuh theuh ah pawh
a then an vawng hlur a, a then an cher deuh a. A then
an ding ruh rol a. Ruh hlir ang in an hmuh theih a ni.
A then 500 nih lai a 180 han nih te chu, Ti i nei nango
tih mai tur a nia.

Chuvang chuan hengte pawh a
fel tawk lo a ni lawm ni? tih kha a hmuh theih a. Hoi
avang hian a hlawhtling thei lo mai aum mang e tih kha a
zuk noih theih leh a ni.

Tin, hetiang New Land Use
Policy a survey na tur fel tak a tih a nih lohna chhan ah
khan rinhlalhna a aum lo thei lova. Council of Ministers
thukhawn mouh pawh in a sawi reng reng loh, Base Line
survey atanga va lak te kha a dik thei lo reng reng a.
Failure chauh lo chu lo chhuak tur aum in a lang lo reng
reng a ni.

Tin, a dawt loh ah chuan
Planning Commission in heng thil hi a hriatpui vaka a, kan
sorkar in hetiang tak hian . New Land Use Policy hi kan
zui duh a, hei hi hlawhtling thei tur ah kan ngai a. Tin,
survey pawh hun tam tawk kan in pe ang a. Tin, chubakah
thil thar a nih avangin hun pawh kan duh ang. Kum 2
kum 3 kan survey hnauh, chutah pawh chuan kan zuang sai
daun lo. Tlem te kan enkawl theih kan pu ang a. Kan
enkawl theih chin chu 10 pawh a ni ang a, 100 a ni ang a.
Tlem tawk a kan ngaih kha kan ti dawn a ni.

Chuvangin Pawh a, 'huan
tan hian pawisa min pe teh a' tih nise ta tur a ni a.
'TIH' a aum lo leh a. Tichuan a survey hian na in
mihring te kan lo thlang lawk a. Kan phur bank e
niang. Phur pawh hi a lutuk a aum thei a. Hengah hian
Planning Commission hriatpui loh rem tih rangawt a
tawk lova. Pawisa pawh an sanction ngal tur a ni a.

Tichuan chumi tih loh e
chu hlawhtlin loh theihna mai tur a ni. Ho lohkhabu
Council of Minister ho thukhawn in an han ngaittush
chhoh a, a tauwa ziak ah chuan 'A fund hi a liab em
a' tih te an chuang leh rih te hi a hawhawn tik tik a.

Mi kan tih tir dawn a nih si chuan, engkim Delhi atang a peih a nih chuan, a limit tih sawi a ngai lo ring'ring. Kan theih chin tawk ah chuan kan ti mai ang. Chu chu a nih dan tur a nih lain kha kha a ni ta ring ring love. Tunah engtingge kan tih tak ? kan tih chuan, hai Department hrang hrang SMF tih te, IRDP tih te, RLEGP tih atangte in pawisa kan han pawt ta a. Khangte kha awmze nei vek a tih an ni a. Forest atangte, Agriculture atangte, NREP atangte, Soil Conservation te a nuai tel nliir kan han pawt hlauk hlauk mai a. Chuan a zavaia tling khawm chu nuai 498.01 a lo ni ta luah mai a ni. Hai hian ngaihtuahna min siam thui khawp mai a Pu Speaker.

Tichuan kan Department te kan ngaihtuah in, kan sorkar chuan mumal tak in tan la ang tiin an puen ven an sawi chhing a. Department hrang hrang hnenah in mamawh engtingge tiin an han ti a. Tichuan plan leh scheme engkim an siam vek a, Delhi ah an zuk siam vek a, Delhi ah an zuk thlon chuan harsatak in Department a Officer ta khan an naur a. Tichuan kan Minister te kan Chief Minister ngei pawh in an lo sawi puiin, hotu atangin hai hi kan mamawh a ni tiin an zuk sawi pui a.

Tichuan an ni thil engkim hria tih theih mai tur expert ten an han an pui a. An plan scheme siam zung zung an an hauah, 'chung hoti, zat hi in mamawh a nih hi' tiin pawisa an rawn po ta a. Tichuan kuminah Department chuan- Officer ten han te hi kan thawh tur a ni a tiin hun an hisap a, pawisa an neih zat an hisap a, hna thawh dan tur non. A theih dan kawng kawng in tan an la te a. Chutianga an han lak chui an tih tur a nia. Sorkar leh mipui pawh kan lawm a. Chutih lai chuan thawh leh khat ah kan sorkar chuan pawisa kha Planning Commission lam ah hnuh kan nei dor si love, New Land Use Policy hman kan duh si a. Nangni Forest hote kha lo hawi teh u. In pawisa neih atang kha nuai 107 han thehchhuak ngaut teh u. In Plan scheme siam te kha tih mai mai a ni lawm ni ? kan zuk ti ngu ni ? Kan ti thei lo a ni. Kan sorkar hian a ti thei pang pang lo.

Mahse nuai 107 chu han belh chhuak teh u, nangni Agriculture te u, in plan siam te kha nuai 80 rangtak in han thehchhuak teh u. Department tin ti khan kan khawng fua fua mai a ni a. Ar te, Mute in a thawng te kha chu nap te a ni ringaut mai a ni. An hlau teh a nia. Angtiang ang chu a nia Pu Speaker, ka takhin kha a relevant vek lo mai thei a.

Amaherawhchu Department tan chuan a hrhawm ngaut ang. Plan leh scheme pute hova kan lo siam a, kan lo hnuhchhuak tawh hotiang a chutizat han tih ngaut mai chu, a la awm som zai te hi a va har dawn em ? kan scheme hi engtingge kan

kan tih hlawhtlin tak ang ? an ti lo thei lo a ni.
Tichuan tunah pawh chhuah tura tih a lo ni a, zick vek
a lo ni ta a. An pawt chhuak ta a, pawisa chu hman a lo
ni ta a. Pawisa chu hman a lo ni ta lova, Delhi ah an
zuk kal leh ngei dawn a. In scheme ang khan in hrang
em Officer te u ? an han ti ang a. 'Hmang e' an ti ang
a. Voucher dik lo siam teuh a ngai dawn hiel em ni ?
Hei pawh hi kan sorkar hian ti fiah sela, Officer te tan
a nuam deuh ang. Voucher dik lo siam teuh, scheme ang
lo khan kan kal thei si lova,

Chuvangin kan siam ta tluh
mai tia an mahni leh mahni in ngaihdam tir ngawt kha a
dik thei lo a nia. Pu Speaker, ka zo tep tawh. Tichuan
kha pawisa kha dik lo taka hman a nih tak chuan dawt an
sawi a ngai ta a. Dawt sawi Department ah kan chantir ta
thluah a nih chuan a rapthlak ngawt a ni.

Chuvang chuan helai hi kan
ngaihtuah chian hle a ngai a. Hei hi kan sorkar rilru
phu a ni lo mai thei-a. Amahorawhchu an hnathawh dan
han en chuan heti zawngpawh hian a sawi theih reng mai
a. Hmudanga sawi pawt chu ka duh lova, helai ngei a
sawi a in siam that theih a nih phoi chuan ngawh hmak
ka duh a. Chumi an sawi theih dan chu hetiang hi a ni
a - Kan sorkar chuan Department hrang hrang hnon atangin.
Delhi lam ah engmah ti fel si lovin, pawisa tih luhna
in a han khaum a. Department te chuan leh theih leh in
an pe ta ngei a. Chu pawisa chu a implement dan mumal
tak a a awm loh avangin chhungkaw laina in duhsakna avang
in, politics khelh nana hmangin, chumi zawng hman dik
lohna a lo awm chuan, Department te mawphurh tir leh
tihna a nih hi maw lo tiin a zuk sawi theih leh a ni.

Nakin zel ah chuan, in lo ti
tha ta, kan la ti tan tir em mai a, chuvangin an ti a
nih chuan, tih rih loh kha a chawh ta reng reng a. In
buatsaih ve phawt se, survey nan hun tam nei rawh se, a
tanna pawh tlem rawh se, a policy hrim hrim a chu a tha
ang.

Amahorawhchu a carry out
dan, implement dan a hi a dik lo lutuk a. Chutianga
Department pawisa dik lo tak a an lak chu Financial
irregularity a ni chiang em em a ni. Chuvangin he thil
hi tun atan kan tih chhoh dan anin, tih theih niin a
lang lova. Chutianga kan tih chuan financial irregularity
ropui lutuk a ni dawn tlat a ni. A nih lohna
tur chuan nichina ka sawi tawh ang khan, Planning Co-
mmission ah engkim ruahman fel vek a tih ni sela.

Tin, a carry out dan tur
sorkar ruahmanna zawng zawng tha tak a, ruahman a, hun
pawh in pek tam a, Planning Commission atanga pawisa

lo kal a nih chuan, chumi ngei chu dik tak a hman baw
kha a tha eng. Mahsela vanduai thlak tak in tunah chu-
tiang tih pakhat mah a awm lova. Tichuan kan zan kal rum
rum a. Mahni leh mahni kan in ngaidam cheap a. Nihahse
pawisa kal dan public fund, public money kal dan tur crawh
chu chhungkhat laina induhsak nan te, party lam a hnathawh
nan te pawh kal thui a nih tak avangin, hoi hi tun atan
chuan tih rih loh nisela. He NLUP hi chu sorkar hien
dah the nghal chiah sela tih vawin ah he House zahawm
tak ah hien ka rawn pu lut a ni a. Chu chu he House a
Member zahawm tak te pawh in min ngaihtuah pui a.

Tin, heng Department Officer
te pawh hah tak leh taim tak a an lo tih sa uluk tak a
an thawhna hi mipuiin kan ngai pawimawh lo thoi lova.
Chuvangin heng thil diklo a implemont dan dik lo awm
te hi a Chiang em avangin, proof theih vek an ni a.
Hei hi hrerengin a hlawhtling dawn lo a ni tih ngaihdan
hi a nghet em em mai a. Chutiang hlawhtling lo tur a
nih avang chuan, mipui leh kan sorkar tan ngai pawh
nakin hnu atan a tha lo reng reng a ni.

Chuvangin hei hi chu imple-
ment nilo solangin, drop nghal hmiah sela tih chu he
House zahawm tak hi ka rawn ngen a ni e. Ka laum e.

PU J. THANGHUAMA:

Pu Speaker, vawin hi Reso-
lution pasarih kan nei a.

Pakhat hi chawhna in k a zo

hman tawh dawn smaw a ni ang a. A ngaiin hun rei tak
hman ni chuan, tlem a kal chak hi a tha awm ang a.
(Speaker - A move to kha minute 30 a pak theih a.
Midang chu minute 15.)

Able, Pu Speaker, kan Lead
Use Policy hi kei vawin ah pass tum mah ila, kan pass
ka ring lova. A tlak tho tho ka ring a, an rawn mave-
na lampang ~~staggie~~. ~~Amaherachhu~~ a kalphua tho loh
dan ~~erawhchu~~ rawn thlawp ve ka duh a. Namin lam a kan
lo hriet dah te a dik chuan, kan chung lam ah kuan
Tape-Recorder a awm a. Record vek a ni a. U thian dan
a kha a dik lo ka ti phawt a.

Tin, Informal meeting reng
reng hien Legally in sorkar dan ah binding a nei lo,
Formal meeting tur a ni a. Mahse Informal meeting tih
a ni a. Kha kha a dik lo te phawt a.

Tin, a pahnih lehna ah chuan,
a tutenge thlang thoi tu tur member te ? ti a zauhna
chu a chhanna ah chuan, 'Thingtlang khua sorkar hnathawk
zawng zawng' tih an ni leh phawt a. Peon, Chawkider
engkim a kha a huap fai vek mai a. Kha pawh kha a dik
lo loh ta bawh a ni. Kha kha an in ka kim loh chung

dawn bawk lova. Tin, a Land Use Policy hrim hrim e chu, a kalphung a hi a fuh dawn lo reng reng in a lang a. Delhi tlang atanga ngaihtuahna ah chuan a fuh mai thei. Amahorawhchu vai ram tana tha hi kan tlangram ah a tha vak lo thei a ni.

Chuvangin kan ram hian in, oi leh bar zawn dan atangin policy hrian hi kan sorkar hian a siam chhuah ve thiam hi a ngai dawn e ni. Tunah a thlan dan te an fuh lo phawt a. Informal Committee kan ti a. Sorkar hnathawk zawng zawng kan ti a. Khua a len dough loh sorkar hnathawk an tam ang a. Khang kha an tel kim dawn lo reng reng a lohlem ah chuan. Public meeting a ni ringaut dawn a ni. Sorchhip ah te phei chuan a theih loh reng reng ringaut dawn a ni.

Tin, kha lai a a committee pawh kha khawtlang in, pawl aiawh te sorkar hnathawk ai aiawh an lo inthlang a nih pawh in; Government in approval a pe tur a ni. Chutitova kan nriat tawh ang chuan bial wise ah pawh han chhut ta ang ila, a population wise pawn a kal hrapa lova, a chuh-chak chak ang deuh in, bial thenkhat ah chuan an baur luh a. Bial thenkhat ah chuan ~~tip~~ te an ni leh a. Hei ka report dawn dan chuan a dawng tur aum kha list an han siam chhuak a. A list a kha a hmu hmasa tur no 1,2,3 tiin an han pe thla a. Mimal hming ka sewi chhuak ni lovin a hrehaum viau a. Entirna atan Phulpui V/CP te chu a serial number kha hnuai tak ah a aum a. Mahse a serial chung zawk a mi kha a leh khalh leh daih mai a.

Khatiang khan a tira an kalphung ah chuan in ~~order of priority~~ kan ti ang nge? A serial no. ang khan pek tur tih a ni a. IRDP kan buaipui ang deuh hi a ni leh mai aum mang e aw ke ti a ni. IRDP pawh a committee chungchang ah chuan YMA aiawh te, MHIP aiawh te pawldang dang aiawh te kan ti a. A committee putling pawh thu lovin, entirnan Chawilung khua ah chuan V/CP leh Secretary in an thlang mai a. An forward phei a, midang committee a tel ve lo te kha sign tir an tum a, an "b" tuh bawk lova, an kal phei pui ta tho a.

Tiang chuan hetah Director Office ah an lo kal a, DRDA Office ah chuan kan in tlan siak leh ta ni ber. Hetah D.C office ah kan committee a. A committee ah khan a hmasa 53 hi thlan nise tih te emaw a lo ni a. Khang kan thlan fel hou pawh khan DRDA ah an lut chho leh kha, thinglang khua atang khan V/C leh tute emaw an in tlan siak chho leh zel a. Hei ka list neih pakhat ah phei chuan hming pakhat vawi marih thai chhiat e aum a. An thai chhia a, an thai nung leh a. Ti khan DRDA - IRDP pawh hi e hun tak ah kan lak theih loh pah fo ta a ni. Chuvangin engatinge? kan tih chuan a tobul kha a dik tiot lo a ni. Tunah pawh thingtlang atanga a group level

~~spaga~~ a fel chuan a chanve zo ang kha kan ni dawn a. A Committee kha heng hi IRDP thlang theitu tur te an ni a. Heng hi Land Use Policy thlang thei tu turte an ni a ti a official Gazette - ah fel thlerh thlawh a chhuah nise. Khatah pawh khan tunah kan hma lawk ah House meuh a sawi chhuah kha chu dik ah kan pawm ve ringawt a. Kha-tiang khan hei chu ka makpa a ni a, ka ni fapa a ni a tih ang mai mai khan tute emaw an intlar thla thlah thluah te mai a. Kha kha India sorkar policy chue a the khaup mai. Mahse a tum kha a thleh tlat te a ni. Chung ai chuan IRDP kan hman dan te engchon ngo a hlauhtlin tawh to nimir lam ah kan ngai thla a. Land Use Policy pawh hi kan sawi vul chuk a, Central Policy a nih avangin leh thil thar a nih avangin fak lo thei lo pawh kan nihna lai a awm a, awm pawh a awm a.

Amaherawhchu Land Use Policy kha Mizoram ah hian a applicable ve em? Mizorams applicable ve lo tur ang chu hei ai chuan hetiang kawng zawng in, kan ram ah chuan Sawhthing hi thlai chin tha thei leh hlawk pawh a hlawk bawk a.

Chuvangin Sawhthing hi Kg ah Rs.5/- Rs. 10/- a kan lei theihna atan helai an hian Subsidise mai rawh u, a subsidise na atan hmang ula, thatchhiet inzirtir pawh a reh ang a. Tichuan kan ram hi a intodelh thei ang. Khatiang khan engngemaw zawng a divert na kawng kha ngaihtuah lova, khulama an tih apiang hi kan sawimawi chawp ve a. Kan ram nunphung leh kal phung nen a lo in mil leh si lova, ngai rong mah ila Land Use Policy hi chue a taupna tur chu 'It is doomed to failure', a fail dawn ngoi ngoi a ni.

Amaherawhchu pawise hi nupui te pawfen man ah i hmang mai mai teh ang. Inaem darh teh ang u kan tih chuan a sual lem lo. Amaherawhchu tum dinchhuah nan kan hmangin ka ring lova. IRDP te pawh kan ti a. Tunah a principle chue a the khaup mai. Amaherawhchu IRDP -a Trysem scheme te kan siam a, kan training han pek dan te pawh hi tuemaw family an chuan puanthui khawl engemaw zeh an pe a. Training kha 10 leh engemaw ti an pe a. Tute emaw training Centre chu pakhat cheuh an pe a. A distribution reng reng pawh hi a inmil te lo a ni.

Chuvangin a implementation leh a verification ah khan kan kal leh tawh lem hlei lova. Kan han ti ngawt mai a. Tunah pawh Land Use Policy hi ngun tak a chhut chuan a lungawi thlak chiah lo. Tunah pawh kan kal thuitawh khaup mai. A village Committee pawh chiang hek suh, a hman dan pawh chiang hek suh. A thlang tute thlan dan pawh chiang hek suh. Helalah a Land Use Policy pawh hi kan Minister in thlang se kan tih chuan, thlang law law sela. Tah kha in bialtu MLA te hian mahni bial atangin Quota

min pe mai sola. A nih loh chuan V/C te emau, chutiang, deuh chuan a thlang thei tuto hi khawtin a sorkar hnathawk zawng zawng te tih ringawt hi chu Champhei ang khawlian ah chuan a theih loh reng reng ringawt mai a ni.

Chubakah chuan Informal Committee a lo ni loh nghal non. Chuvangin 'Formal Committee' tih tur a ni a. Sorkar hnathawk hian an chu mi kha mi i dah ang u. Nikhat ngun tak a ngaihtuah ni sela. Tin, a thlan chhuah den ah pawh hian a list ah pawh kan hmu nual a. Khang ah pawh khan khaw khat ka bial chhung ah ngei pawh an hmu tlom em em mai a. A vang chu khatih lai khan kan lo zin bu hlahh mai a. Naur hunlai kha, a bul atanga a thlan den a dik loh avangin. A thlang thei tuto a dik tlat lo.

Chuvangin he policy chu Delhi ah pawh naur that loh a tha in ka hria a. Hei ai chuan Sawthing hi subsidise na tan he pawisa hi min hman sak mai rawh u ti zawng a divert na kan ngaihtuah loh chuan, thil a tawp a wastage mai tur hi chu a tha in ka hre lova. A committee pawh fel tawk deuh phok phawk a siam that ni sela. Chu chu ka ngen ih karawt duh a ni e. Ka laum e.

*PU LALHUTHANGA :

Pu Speaker, vawin ni ah Land Use Policy kan S-situa bialtu zahawm takin a NLUP

a rawn tih mai kha sawi ho thei a kan awm hi tha ka ti a. Land Use Policy hi ka hma a member zahawm tak tak in an rawn sawi tak ang khan, chhungte chhung loh chhawng, tu leh fate inthlang chiam mai ah an rawn sawi a. Kha kha inkhat a cheng an nih chuan kei pawh the in ka ring bik lova.

Amaherawhchu a policy ah chuan hmanni a L.G speech a kan sawi lan tawh, kei ngoi pawh in ka sawi lan tawh, Mizoram ah hian kawh a ni chhuak chhiar a feh chhuak thin to hi, chhungkua 60000 - 70000 inkar an ni a tih a ni a. Chumito chu kumtin a kawh a ni chhuak chhiar a feh chhuak lovin, vawin ni a Jhumming system hi, kan lo neih dan hi tih danglam theih nan State dang ah te pawh an lo tih ve tawh thin ang in, engtinggo Mizoram ah hian kan hman ang ? tih policy he sorkar hian ngiin, Government of India in hemi policy hi rawn hmang in, he Land Use Policy hi rawn hmang in, a rawn kalpui niin ka hria a.

Chutah chuan Mizoram ah pawh tu loh fate thlah tu bul han chhui chuan, pahnih pathum vol lok Mizofate hi kan thlah tute an ni a. Tu loh fa chulai ah chuan in hman lo ram chang kan tam hla ang. Chu chu vawin ni ah hian kan ngaihtuah naah

tel nghan se tha in ka ring a. Chungah te chuan kawla ni chhuak chhiar a zizawngte 60000 - 70000 inker ah an tel a nih chuan, pa fa za pawh lo awm sola, thlan vek pawh nise, engnge he policy ah hian tih hlawhtlin lohna tur leh kai sualna awm ang tih hi kai chuan kan sawi ho atang khan ngaihdan nghet tak a ka rawn siam chhuah a ni a.

Tin, he Land Use Policy kan tih hi, hei zaurh a tla hle a. Thingtlang ah kan kal a. Hmuntin ah homi Resolution neitu in a a sawi dan in, Zoram dung loh vang kan fan na ah, kan kalna ab, tun sorkar chuan he Land Use Policy a rawn tih chhuah ah hian Sekibuhchhuak Zofate tan min pe a ni o tih hi kan hnen a an sawi dan chu a ni a. Vawilin ni ah he a practice hi abondon ni rawh se a rawn ti pheih hi chu, kan Zoram dung loh vanga zizawng tuto hian an hria ang tih ka hlau tak zet zet a. Hei hi Mizoram te tan, Zofate tan tah leh rumna Resolution miin ka hria. Chuvangin hei hi khawngaihtak-in withdraw thei se ka duh a.

Tin, L.G Speech discussion kan neih lai khan, kan member zahawm tak tak te pawh khan, kan Officer tam tak ten Land Use Policy hi a hlawhtling dawn si lova, hei hi chuan kan lu a ti hai a ni tiin Tlungvel bialtu zahawm tak khan a sawi niin ka hria a.

Amaherawhchu keiin ka hriat dan ah chuan, hei hi zawngin Mizoram kan potheihna hi umbo turin sorkar in a tumna ah hei hi a hlawhtlin phah ka ring a ni. Kawng dang zawng zawng a Contractor ten a mirethei te sum an lo ei ruk thin, tunhma IRDP project an hmuh tur te Thlangra Contractor ten an supply na, Thlangra 100, chem 10, Tuthlawh 10 chhe pui pui hman blok loh an tih te pawh kha hei hi chuan Contractor tai hian lo in, miretheite kaut kai, miretheite sum hman, miretheite chhung a rawn thlang ta a ni a tih hi kan officer ta min hriih dan a ni a.

Chuvangin vawilin ni ah hian kan officer te lo sawi an awm a nih chuan, tam pawh an nih ka ring lova. He Land Use Policy hi a awm lo awm chhun te a lo tawng palh niin ka hria.

Tin, chumaibakah chuan he Land Use Policy hi Planning Commission in a a pawmpui a hriatpui a ni a. Tuna kan Budget kha an la thlir lo nghe nghe in ka ring. Kan Budget ah pawh khan he Land Use Policy atan telh a nih nghe nghe kha. Chuvangin nikumah erawhchuan Department hrang hrang ah pawh chhuah a ni a. Internal arrangement erawhchu siam theih a ni. Chu chu vawilin ah kan member pui zahawm tak ten an hre lo a nih chuan chu chu lo thlir nawn se, Internal arrangement chu halai ah hian siam theih

a nih ang in, nikum khan pawisa Department atengin pawhkhawm a nih kha. Chu chu kan hriat tlan a tha in ka hria. Chutiang ang chuan Planning Commission in a pawmpui leh ang ni a kan hriat kha chu, a pawmpui a ni tih hi kan hriat a tha in ka hria.

Tin, chubakah chuan hei tlon ha, belh ka duh chu kumtina kan lo neih a oi kan zawna hi yawiin ni ah chuan a hlawhtling lo, kan hlawhchhem thin a ni tih kan hriat thohina ah chuan, sorkar buhfai control buhfai kan tih hi kumtina kan chawh luh tam zia hi kan hriat tha in ka ring a. Hoteh hian chhui tur leh hriat chhuah tur tam tek ram hruaitute chuan kan neih ka hria. Hrohaum tak in thosi karah vaihlonhlo kar ah kumtina in hna kan thawk a.

Amaherawhchu khem khawp kum chanve ei taek yawiin ni ah chuan kan thlo chhuak thei thin ta lova. Chu chu engng a chhan? Kan lih chuan, kan lo neih dan hi tih danglam a ngai tawh a, thildang kan zawn hi a ngai tawh hlo a ni tih hi yawiin ah hian ho House hian a hria a.

Chuvangin yawiin ni a kan lo neih dan eng kan hlawhchhem tawh si chuan, ram nghet siam tur hian helai ah hian kan ti dawn laum ni? tih hi yawiin ni ah kan hria a. Kan ti ten a hi a. Chhungkaw 60000 leh 70000 inkara 10000 dawn chu tunah hian sorkar in a thlang fel tawh a. An tan chho chu a ni a.

Tin, a tan chhohna ah pawh mi tam tek chu an hlim em em a. Sorkar ah boiscine nei reng reng lo ten yawiin ni ah sorkar ah an lo thawh thin, sorkar atangan han hmu lok phoi hi chu lawmaum an ti leh zual a. Chuvangin he kan Land Use Policy tuna kan practice dan hi chu a tha taek in ka hria. Han neih hi chu yawiin ni ah hian ho House atan an hian ka hal reng reng lova. A Resolution neitu pawh hian witheraw thei hram so ka duh tek zet a ni.

Tin, chumabekah chuan kumtina kan lo neih a Mizoram thing elch maq kan sch-thlak leh hal ral thin hi han chhut chuan, kumtina kan thing leh mau halral hi cheng vaibelchhe zo chuang a ni a. Amaherawhchu chutah chuan kan lek chhuah arawhchu cheng vaibelchhe 35 vel chhuah a ni nghe nghe a. Hoteh tiang zel a kan kal a nih chuan yawiin ah Zafaton ram kan nei dawn lo. Tuna kan Land Use Policy hi hlawhtling, turah ho House hian kan thawh chhuah pui a, thingtlang a kan bial tin a kan vah chhuahpui a, hlawhtling ngei ngei tura kan thawh chhuah hi ram tan chho fakawm, ram siam tha tu, ram tungdingtu, Zoram nuam a siam tu kan ni ang tih ka ring a.

Tin, kan Land Use Policy

in vawiin a a tumber chu chhungtin te tan kum 5 chhuaga Bigha 2, Mizopa in tin tawi hmun, kan tih tin 5 hmun kan tih ang thin hi chhungkaw khat in lo nei se, hei hi ram nghet ah lo siam se, a dang zawng hi chu forestry ah ram ngaw atan siam ila. Kan ram thing loh mau hi lo duah tha loh sola, chuta tang chuan kan Zoram hi ram nuam a lo ni ang a. A hausak tur ang hian kan thing loh mau zawng zawng te pawh hi, humhalh that in a awm ang a, a nih tur ang in Mizo hi kan par chhuak ve thei tawh ang tih hi he kan Land Use Policy ah hian kan hriat tel tha in ka hria a.

Chuvangin he kan practice lai mek hi pah thlek, a reng thei ang bar a tih tawp ka MLA pui zahawm tak in a a rawt hi, Zoram lo neitute tan ah chuan satah chhuak pok tluk niin ka hria. Chuvangin vawiin ni ah Sekibuhchhuak Mizoram sorakar in min rawn pe a. Kan la hriat ngai reng reng loh an tih hi, kan tih tawp sak chuan kai chuan Mizoram hi zawng thlaer ram, ram chhia ah kan siam dawn a. Chu chu vawiin ni ah hian kan hriat tha in ka hria.

Tin, kan ram ah hian kan hriat theih tur chiang tak a awm chu ruah haw ni tur leh haw loh ni tur pawh hi kan chhut thei tawh lo. Hmanlai kan Pi loh Pute chuan chutih hun ah chuan Tato a haw a, chutah chuan vau nuai thli, tiin fur te pawh hun binei tak in an sawi thin a. Lo hal hun te pawh chumi chintah chuan an ti a.

Amahorawhchu vawiin ni ah shuan engvanginngae chu pawh chu kan sawi theih tawh loh? Engvanginngae kan hriat theih tawh loh? Kan tih chuan kan ram thing loh mau te hi kan ti chereu ze tawh a, chuvangin he kan climate, tunhma a min vawngtu te pawh kha kan chen chereu zawh tawh yang niin ka hria a.

Chuvangin vawiin ni aten kan Land Use Policy NLUP ti a kan member in a rawn put loh ang hi chu vawiin ni ah hian ka pass pui thei ngang lova, ka member pui tam tak te pawn hei hi min rawn pawmpui a, ka ngaihdan ang hi min rawn tawmpui turin vawiin ni ah hian ka ngen duh che u a, ka rawn awm duh che u a ni tih hi ka rawn sawi duh a ni e. Ka laum e.

SPEAKER : Pu Zalauma kha nichin khan a ding a, kan ko nghal ang.

*PU ZALAWMA : Pu Speaker, ka hma a mi khan minute 3 vel in a hmang zo lo duh a, in pok belh ka duh viau a. He thil hi Pu Speaker, policy matter tak tak a nih avangin member tin te hian ngaihdan kan nei a nih phei chuan, sawi duh vek ila hun pawh hi ren lo ila, a pawimawh em em in ka hria a.

Ram mipuite dinmun chawiken tumna tak tak socialism policy thil tak tak, India sorkar pawh in an Constitution a an dah hial khawp a, mipuite dinhaun zuk khawh thil a ni a.

Chuvangin he i ka lo ngaidan chuan New Land Use Policy hi fapa thil thlawp pok kan tih ang douh hian a hlu hle in ka hria a. Chu chu hmang tlang si a ngaihtuah chhuahna chang hria a, kan sorkar in hetiang policy mipuite dinmun chawiken an a policy, sorkar tih aum tak mai rawt chhuak thiam a an han bul tan thiam hi lawmthu kan sawi zawk hi, lawmthu awing Reso- lution ah chang thei sela ka duh khawp mai.

Hei a raun maw te hian kan Saitual bial MLA zahawm tak hian a policy chu a tha a ti a. Amaherawheku sawitu hmasa pakhatna leh pahnihna kha chuan a selection ah an buai niin ka hria. Ho thil hi a that em avangin buh lu chuh lei a nih ang in, in chuh a suau suau tham a ni. A dang hmasa in chhuanna tham khawp a thil hlu, pian tharna te non pawh a hre Chiang tan chuan a in ang viu in ka hria.

Chuvangin hetiang thil tha chhungtin ten a an thlah, thlah leh thlong a eizawna ngelghet an neih theihna tur a sorkar in scheme tlan mipuite chhawmdawina, amahni tana an In leh lo hmasa bak ah, oi leh bar tur atan chatuan atana nunna an neih theih na tur atana he thil an ruahman hi a buai a ni.

Chuvangin chutina i a Resolu- tion neitu in a raun tih ang a han abandon a ni thei rong peng lova. Ram hi hmasawn zel tum a ka buai a ni a. Ho lai a member zahawm tak tak te lo kel khawp te hian hmasawn tum in, thil thar ngaihtuah in, anghemaw Revolutionary idea development thil ah pawh kan neihna tur kawng hi kan dap theih turah ka ngai ngho ngho zawk a. Hetiang thil hmasawn a rahbi thar 1952 atangin District Council ah kan aum ve e, 1972 thlang in kan aum a, chulai chuan in kan Budget te a tenau a, mipuite dinmun pawh a chhawmdawl theih em em lehva.

Tichuan U.T kan han nei a. 1972 atangin 1985 ka thlang tauh a. Department ten thahnom ngai tak a an Department theuh te, mipuite tangkai a tur leh ram hmasawn kan hna an thawhna ah hian, diktakin Mizo chhungkua an sawi tauh ang a In 70000 dawn lai dinmun hi a la changkang thei rong reng lo a si.

Chuvangin hnathawhna idea leh hnathawhna lem pang a Officer te fol hle mahso, helai ah hian kawng dik zawna in ram thar, ram nau- pang sorkar kan nih avangin, dap chhoh zel a ni a. Tun ah chuan mipuite, Mizo chhungkua tin tan heti nga thil thlawp pak ang tluk hial a, hmangaihna a chhuak

ngaihtuah chbuaahna kan sorkar in pawisa a anmahni tana hnathawk a an siam ngei na mai tur thil rushmen hi koi thil ropui, khawvelah a aia ropui aum thei dawn amou ni chu aw ka ti a ni. Hetianga miretheito dinhmun chaw kan tumna rilru policy a hi.

Chuvangin kei hei hi hmalam kan pan pui a chak zawk in engtingge kan kai theih ang & Vawin ni a la chang lo pawh hian hei hi sorkar policy a lo nih tauh chuan kum 5-7 nuah chuan chhungtin hian an dawng vek dawn niin ka hre nghe nghe a. Chuvangin tlem a noifa te deuh pheh chuan lo hman hmawh lone, an dawng dawn tho a ni. Chutiang khawp a long term policy nei a kan sorkar in Mizofate ruel ban vo theihna tur leh hmo-sawna eizawna ngelnghet kan neih theihna tur lek ram nghet kan neih theihna tur a hetiang permanent thil tak tak a, kan tu leh fa, kan thleh kel zul atan pawh chhen fakawm tur leh, dinhmun ngelnghet a siam tumna, he Congress I sorkar in a an duang chhuok rawih mai hi ropui ka ti a ni.

Hoi nicbina an sawi ken hriat ang in, kan ram hi phai ram ah te conforence akan kal chuan, Mizoram te chu 80% Forest in neih, in nei tha ber a laum an ti thin a. Amahorawhchu kan tlang ram lo neih shifting cultivation hian nasa tak in kan ram leilung hlutna leh thatna zawng zawng nitin a len uva, a kang ral a, ka tawng an huatthu suh ah, Tuikuk Pethian siam theih loh ang mai a, hetiang kan aum hi chuan a lai reng reng lo a ni.

Chuvangin hong New Policy, a mover in a rawn sawi NLUP, Luka ziak ang ah ngai zawk ee a tha in ka hria. NLUP tih kha Luka ah deh thei sola. Chuvangin hetiang a chhandamna chhungtin tona thilthlawnpak na tura kawng inhawng ah hian, engtingge hei hian a policy tha ti si a; a implementation in pawh hui thlat si loh hi chu dik tak-in mah reng reng so, ti pawl an ni ve reng reng a ni.

Chuvangin hong ah hian ram mipuite dinhmun tek tek ngaihtuah chhuhna a lo lanna thin chu, kan sawi tauh ang Khan, ho JHUMMING CULTIYA-TION kumtin a kan lo neih, chhungtin in chutianga eizawn na ngelnghet kan neih chuan nasa tak in kan forest atang pawh hian, Revenue tom zawk tunsia let za hi kan nei thei dawn tih putlinna lamang rilru ngaihtuah na lamang rilru ngaihtuah pheh chuan, chu chu kan tum zawk tur a ni a.

Tin, he kan Soil hlutna leh kan thing leh mau hlutna zawng zawng kumtin lonei tuten ka hma a Sairang bieltu MLA Khan min hrih tauh a, vaibelchhe za leh sawmhni pang deuh theu hi mithiam te chuan, kumtin kan hal chhiat leh Land kan siam a, loitha a pahna hlutna zawng zawng non an chhut chhuah, dan a ni a. Chu chu kumtin a nih chu. Kumkhat ah

Vaibolchhe 48 kan nei a, kan tih chhiat kha a lot hndh aiam a tam tihna a nih chu. Chutieng ringawt chuan a awm theih tawh loh a nih chu. Chuvangin mi an cho lo thei lo. Ngaihtuahna thar a neih loh theih loh. Motieng ah pawh kumin a mipuite hman tur, mipuite develop na atan a kan sen tur plan ah Vaibolchhe 48 kan hmuh lala a sia let nga sia tam kan tih chhiat leh chuan, ram re ui tak kan in thlon dawn em ni? Chung ngaihden atangte pawh chuan hetiang thil ah hian thil chik ngun deuh hlek tha in ka ring a.

Chuvangin Mizoram chu kan vannei em em a. Sorkar ram vek mai a ni a. Sq.mile ah mihring tlem te 100 lon tih vel lok la awma khawp in population han chhiar pawh in kan ram ah ram ruak a la tam a ni. Chuvangin heng ah hian kan sorkar in mahni ram bik neihna tur, an eizawna ngelnghet neihna tura thil an ruahman a, hma an la hi a tha em em a. Kum khat atan kan han tan a ni a, mihring ah tehkhin te ila, kumkhat ah chuan a zavain a zarzo theih vek loh a ni. Mihring kum khat tling chu kan phawr thei lo. He policy pawh hi nakinah chuan a lo phet zia hi thangthar zelin an la hmu dawn a ni. A chiang khawp in ka hre mai.

Chuvangin heng mi ui chung ti Zofate dinmun dawmkan na ruahmanna scheme plan tha deuh mai kan nei ta hi ka laum tak tak a. Tunah hian he selection thu ah, ka sawi tawh ang khan, lungngaihna tur a la awm hrih lo. A chan vek theih rih loh a ni. Kum khat a sem tur thil kha kum 10 deuh thaw programme turah hian mitin in a chan theih loh.

Chuvangin kan member zahawm tak a mover khan a policy tha tiin a thlan thu ah buaina a neih avangin a implementation a pawh kha a sawi vek in ka hre love. A family thlan chhuah chungchang mai kha, mahni duhsak zawng re tel tlem deuh hlek avanga rawn sawi mai niin ka hria a. Tuna thlan te pawh kha Mizo a nih chuan, a unaupa a ehungto a lainate an ni theuh a ni. Mizo chu phhungkhat ang chiah a kan society pawh awm a nih avangin, tupawh chang se tia hmampate, hnam hmangaih tu te rilru put ang in, an nin puar tak in ei so, klinin a tuihang pawh hawp ila ti ang a ngaihtheihna, chutieng hmangaihna rilru kan put hi a tul zawk in ka hria a.

Tin, Department tam tak in 1952 -ah khan Democracy kan lo siam ve, District Council kan lo nei ve det det a. 1972 - ah sorkar te U.T kan lo nui a. Chumi atanga kan pawisa sen zawng zawng Development na atara leilet tanpuina atan te, Sangha tuikhuah tanpui nam te kawng tinreng a pawisa kan sen hian Mizofate ram neitute chhunglein chhenfek lohna chin a awm avangin, hai hi a monitoring dan tha zawk ngaihtuah a, he family reconstruction eizawna ngelnghet neihna tura tih ah hian, engtingge ni kawng thar kan dap ang? Hmelak tanna hi nunna tak tak thu ni ah ka

ngai lo thei lova. Tunah pawh Development Department ah chuan kan hre vak a. Development angemaw zat forest ah te, Industry ah te Community Development ah te, P.W.D thlengin mihring chungkua in a, a duhzawng Department a project a thlan ang khan, tunah hian selection an siam ta a ni. Chung a nih phei chuan kha department ah khan entirnan Agriculture Department ah chuan chungkhat chuan leilet ah project kan siam, kan tuina ber a ni. Thenkhat chuan thingphun lam hi kan tuina ber a ni. Entirnan sawi ta ila, hotah hian kan chung eizawna a awm ang he project ah hian an fu ta chat a. Chumi Department chuan development kal pangngai tur a hma kumdanga an tih ang kha family khan a thlan department ah khan, department khan tanpuina chhawmdawlna an pe ta a. A supervision pawh a tawp thlong a an tur a ha policy hi zam a ni.

Chuvangin a ni lo zawng a department hrang ang zia zang a, Technical department in supervision pawh an nei love, chutiang khatiang chu a ni e, hei hi a buai the the dawn tih lam ni si lova, hetia policy hrim hrim leh a implementation khawlaia, a local consumption te te emaw tute emaw insawisalna ang lok a thil ngaihtuahna atanga he thil hi rawn irh chhuak a ni lova. Ram mipuite hmangaihna rilre a tih a ni a.

Chuvangin tunah hian development ang a chungkua in a project a thlan a kha kha department khan a finance ta a. Supervision pawh a nei ta a ni. Hmundangah kha pawisa kha a kal rang rang lo. Department son ral kha a ni the. Chuvang zawk chuan he thil ah hian kan hre chiang lo a nih chuan, kan chiang lo a nih chuan, kan department hotute pawh hi zawh theih in a awm in ka ring a. Amahni supervision neitu leh engkim scheme thiam tak a mipuite dinhmun ngelnghet eizawna ngelnghet an neihna tura thil an lo kalpuina ah hian, hrietchian lohna a nih loh chuan, tunah hian he pawisa diversion anga sawi fo leh homi ah hian tih hi a dik thei rang rang lo.

Chuvangin kha department pawisa kha, a project neitu family khan a supervision kha a hman a ni tih hi kan hriat chian ka duh a. Chuvangin sawisalna tur rang he thil ah hian a awm lo a ni. Ke sawi tawh ang khan hetiang kan sorkar ten uluk tak a kan ram in tunah ram te a lo darh ta a. Chhngtin ten a eizawna ngelnghet kan zawn hian kan thlah kal zel ah; Mizofate hian nuai 10 kan tlin hunah, he thil hi chuan va lo the om an tih theihna tura an Pi leh Pu ten a, In leh lo, eizawna ngelnghet an ram sauh sauh theihna tura hetiang thil policy lo irh chhuak a nih awng hian, kan member zahawm tak tak te pawm theihtawp chhuah a, engngemaw thil dik lo hman dik loh awm a nih erach chuan thudang ah ngai ila. Tunah chuan he thil sem dan ah chuan kan hriat theuh angin A.O in Register a kawl ang a, S.D.O (Civil)

in, D.C in District tin ah an kaw! bauk a, Village Council in an kaw! bauk a, ong pawh tanpuina hmu ta ta family tin khan an hmuh chuan, chumita family chuan Rs.3000/- a dawng dawn ti ta sale. Register bu ah khan Deputy Commissioner in Lala hming zawnah Rs.3000/- a hmu dawn a. Chutiang copy chiah chu A.O in a kaw! ang.

Chutiang bauk copy chu V/C in a kaw! ang. Khawi ah mah pawisa luan ralna a awm lo reng reng. Kha project ah khan a nih ang ang in a hmangthoi dawn ta a ni. Chuvangchuan hei ni a kalhmang ah leh a implementation process den ah pawh hian diklo a awm a nih chuan, kha kha sawi zawk nisela.

Tunah a benefociaries family te hian complaint an la rawn siam lo a ni. Pawisa ka hmu kin lo ti an awm lo a ni. Kan officer ten theihtawp in hmangaihna rilru nen tun ah hian, chhungtin in Vawk vulh tu in Vawkvulh emaw, Huan siantu in huan a siam emaw loilet siam tu in sorkar tanpuina nen a lo tih vet vet, kan officer ten khatieng hmel an hmuh kha an hlim a sin.

Chuvangin he thil a sawisel zawng a kalpui lovin, a policy thatna ah hian chhungtin in a beneficiaries te, malsawma thil thlawpek dawng tute atangin complaint kan hmulo a nih chuan, in sawisel tum hrim hrim na angin ka hria a. Hei hi he In zehawm tak ah hian hetiang thil hi chu sawi loh nisela. A tha zawngin he policy hi theihtawp chhuh e, member tin ten rilru seng a Mizo kan hmangaih a nih chuan, Mizo chhung tin hi kan hmangaih tak tak chuan hatah hian kan rilru i nght ang u tih ka han sawm duh a ni. Ka laum e.

PU F. LALCHHAWNA : Pu Speaker, he New Land Use policy chungchuan kan a wi tur hi, tunhma in he kan policy hi kan sorkar in a zam chhuah hma khan, tha hle in ka hria a. Ram hoti zozai kangmei a kan loh thin leh kumtin a kan vah chhiet to hi onngomaw ti zawng a a tihdanglamna awm thoi tura hotuten a tanlok den an hriet hun hi ka nghakhlel em em thin a.

Chuvang chuan he New Land Use Policy hi tha hle in ka hria a. Tunah hian Pu Speaker, tha ka ti leh zual a. A chhan chu kan Opposition unau ten a tha lo om mai, a diklo em mai, an tih avang hian, he policy hi a lo tha ngang chu a nih awm hi maw, tiin min ngaihtir to a ni. Tunhma a khati taka chop leh hrchawm a kan awm lai hunte, harsna hlauhthawna tinreng to kan tawh lai pawh kha, kan paltiang a, a lawmawm em o kan tih pawh in, 'a lawm-awm hyan hlei nem' an tih tlat thin avangin an ni hi thil the a nih phawt chuan tha manglo deuh a min

ngaihpuí tu ang a ke ngaih avangin, tho loh zual niin ke hria a. Chuvangin ho thil tha hi Mizoram sorkar in a rawn tih chhuah avangin lawmaum kan ti ngawt a ni.

Pu Speaker, he New Land Use Policy hi sorkar hnathawk ka hmuh loh k um tam bor to chuan an fak a ni. A chhan chu thingtlang khaw kilkhawr to te, tunhma a hriat hlawh ngai lo te, tunhma a an hming lam chhuah ngai loh ton, enggemaw zat sorkar sum an dawng ve dawn a, chutiang a lawmpuina rilru pu Department hrang hrang a officer tam tak ka nmu a, ka lawm bauk a ni.

Amaherawhchu mipui an thuhmun fo thei lo tih ang in he New Land Use Policy hman tur chungchang ch pawh hian diktak in kan depart- ment hotute, officer lian to zingah pawh hian a sawisel loh a hnawk zung a sawi chu an aum palh ve pawh a ni mai thei. An aum palh a nih pawh-in thingtlang, mite hmasawn na ngaihtuah aia mahni ipte lam ngaihtuah an ni mai aum munge aw tih ka rilru ah a aum a.

Amaherawhchu chutiang a sawiseltu loh a kalh zung a tih tum a theihtaup chhuah tu orawh chu an aum ka hre lo a ni. Tin, fund lakkhaum chungchangah khan kan Saitual biallu MLA zahawm tak kha, a mangang a, a ui hlo niin ka hria a. Amaherawhchu Pu Speaker, kha kan member zahawm tak kha, an lakkhaum dan kawng hmang kha a hrechiang lava, chuvangin a ui mai mai a ni. Hrechiang sele chuan "E, a lo ni tak maw" a tih ngai ka ring a ni. Entiran kan mover zahawm takin a sawi kha forest department atang to, Agriculture atang to, Soil Conservation atang to, Sericulture atang to loh a dang to atangin omew pawisa a nuai tel in an le khaum a. Kha nuai tel kha an hnathawh tur ang thawk to lovin, he New Land Use Policy lam ah hian an dah ta daih a lawm maw lo, a hriatsual palh niin ka hria.

Chuvangin hotiang deuh hian ka rilru ah tehkhin thu a lo aum a. Vawin ah feh kawng sah tur a ni a. Chawfun a thawh tur a ni tiin Tlangau a au a. Tichuan kan mover zahawm tak chu fehkawng sat tura chhuak tur to zingah tel ve a ni a. Tichuan a ~~Chungtam-chaw~~ an fun sak a, a lungawi lo a ni. Engahnghe feh kawng sah nach kan chaw in fun mai dawn ? Kawngsat in a lawm kan chhuah dawn a ti a. Nimehela a ngai thiam lo a ni. Kawngsah ne lamah kha a chaw fun kha a man a va ei loh dawn a lawm. Kha kha hria sela chuan, a chhungle hnarah chuan lianpuí in fun rawh u, ke ei tun tun dawn a ni a tih hmeh nghe nghe a ni.

Chutiang deuh chu a ni Pu Speaker, he Department fund lakkhaum hi chhuhsak a, Department hrang a pok a ni lo, he New Land Use

Policy ah hian mirethei thingtlang khua chawikin turto hi Agriculture lama tui mato, Sericulture a tuimi to, Voty a tui mite, mahni tuina zewng ang theeh thlang tur leh, thlang thei leh thlang tawh a bustsaih an ni. Chumite enkawlna atan chuan a lawm, Voty Department leh a dangte enkawlna atan alawm sarkar in sum kna a lakkhawm. Agriculture lama tuimi to hamthamna tur leh an dinchhuahna tur atan a lawm sum kha sarkar in Land Use Policy atan a lakkhawm.

Chuvangchuan Pu Speaker, he Department hrang hrang atanga lakkhawm a fund dah-khawm a, thingtlang mipui, mi rethei, lo naitur, kan chhungto, hncna pek hi a awmin a tha em em niin ka hria a ni.

Tin, kan Resolution rawn move tu khan he Policy hi a that chu a tha a ni a ti. Chuvang in Pu Speaker, a Policy a tha a, a kalkawng leh sem den kwang thueh harsatna a awm palh a ni mai thei. Ka hmaa Sateek hialta hna zahawm tak nen, mover zahawm tak nen khan a semah an buai niin ka hria a. A thluk ah Vala i buai em ni ? tih ang deuh in, a sem ah an buai ni berin a lang zawk a ni. A Policy kha a tha an ti buk si. Pu Speaker, thilsem hi harsa deuh mai a ni a. He thil sem chungcheng ah hian kan sarkar in a enchhin na leh a a bul tanna ah hian a famkim ang tih tuman i pisoi lo ang u. Famkim lohna hmun ah, zawn chawngna hmun ah, nimansala thil tha kan tue ang a a dang chu thueh chuang lovin, khami atana sum semna hna kan thueh kwang ah Khan a dik lo pawh a awm rom rum ang. Tihswal palh pawh a awm ang. Tih fel leh tam tek a awm ngai ang tih ka ring.

Amaherawhchh chung avang chuan a policy hi a chho chuang lo tih erawhchh ngat tak in ken member te pawh hian min hriatpui sala ka va ti em. Thil sem a harsa a. Chuvangchuan he kan thilsem chungcheng ah hian a ni fate, a na unauto, a unau unau leh te tupawh Mizorame mi 60000 - 700000 iaker kan sem tur ah hian an lo hmu va a nih chuan, a lawm ui awm a ni mai lo maw ? Nakinah he thil hi kumin a sem a tawp leh mai tur a ni lova. Rawn kal zel, hmaok kan nien hma loh a sem tur a nih avang hian a hmu huan deuh te, a hmu tlei deuh te, kan unau hante lo tel va leh hun te, kan farnuto, makpa te tel va so tih kanawhthuiom em te an tel theih leh hun lai ah pawh hian, tute amaw chuan hamthamna lonaitu rethei te zingch chingtute an awm nual dawn si avangin, he Policy hi a sem ah i buai lovang. Athluk ah i buai lovang.

Chuvangin kumin a hmu lovin nakum ah a hmu dawn. Nakuma hmu lovin kur leh ah an hmu dawn. Chutiang chuan kan hmuh hun a rual thep in

kan tih theih dawn leh avangin, in sem diel tiel hun
chang thiam ila.

Chuvangin he Zarem thabna
policy duhawn tak New Land Use Policy hi Mizoram serkar
in kangkawh zel turin leh he Resolution noitu pawh hian
hnukdawk a, a lo nih tak chu, ka chawfun aine tur ka lo
hai a nih chu, thlam ah ka ei leh dawn tha tih ka lo
hrole a ni a a tih ka baicci in ka ngon a ni. Ka laum
a Pu Speaker.

SPEAKER : Awlo, hei lan a hun eniah a,
kan chawh rih an a, Dar 2:00
leh kan lut leh thup nia.

Recess till 2:00 P.M.

2 P.M.

SPEAKER : Awlo, kan Resolution Pu Lal-
hmingthanga kan saum ang.

* PU LALHMINGTHANGA : Pu Speaker, hun khi minute
2,3 vel in a poih tawh a.
Mahse min lo chhinchhiah sak
la. Hei Pu Speaker, kan Resolution hi vawlin ah han
sawi ve ka duh a. Point hrang pathum vel in then a ngaiin
ka hria a.

Pakhatna ah chuan, he New
Land Use Policy tih tuna kan serkar tena an ken chhah
dan hrim hrim a hi a hlawhtling dawn in a lang lava.
Tunah pawh kan hmuh dan in a pumpuiah chuan chhungkaw
5000 aia tam hnenah a pe tih L.G speech atangin kan
hria a. Tin, kan Finance Minister sawi atang pawh kan
hria a. Kha mite hnenah kha pawisa kha Rs. 3000/- emaw
an va pe ta mai a. Chu chuan Mizo leneih dan pangngai
a lo pawh ah to kha lo pawt lo turin an ti ta a.
Hmanni Thonzawl ka kal chuan, a sirah chuan in 280 in
inhmu ang min ti a, lo kan pawt ta lava. Tah chuan a
hmute chu in 60 emaw an ni ta a. Tunah hian New Land
Use Policy hi kan tam phah an ti tlat a ni. Kha kha
a taka awm a ni a.

Chuvangin hetiang ang a
Department in onkawlna mumal silova Rs.3000/- in
pek rikngawt mai hi, a dawn lai chuan in mi chu an
lawm a ni. Nimahsula kumtin 3000/- in pe chhevin,
kum 100 chhung pawh Mizoram ah chhungkua 70000 to hi
in pe zel pawh ni ilangin, ram hmasawna tur tak tak
kawngpui to, transport system to, power supply to leh

khang ho kan ti a nih si lah chuan, kan kumtin lonoh sawn hi a bo tak tak chuan chuang lova. A rah heng Rs. 3000/- pek ringawt hi hmuh tur a aum chuan chuang loh lova. Chu chu thingtlang pa mawl te te pawh hian an hmuh tlang chiang khawp mai. Tuna an pek sa te pawh hian an lo nah dan panngai khe kalsan a, aizawna atana hmang tur chuan Rs. 3000/- chu a baitham lutuk si a. A tih ngaihna an hrechuang lo. A theih sor ah pawh chhungkaw thawmhaw loh hungrua te an loi mai a. Rs. 3000/- an dawn chuan an lawm viaw a ni.

Chuhawhchuh chung, chiah chu tuih first badge a kan sorker thil an tih tak ah pawh Pu Speaker, thil aum dan a ni a. Eshian a a pawimawh hlo a ni.

Tin, khemi ruel khan a point pahniha ah chuan, a hrin chu mipuito hnenah sorker hnen a heisei tam zelna a bring an a. Moral kan tih mai, mihring rilru thatna politics thianghlina te a ti chhia ang a. Tin, chubakah politics ah khang heiseina khan vote loina te a ti chhuak ang a.

Tin, chubakah thatchhiatna sorker hnen atanga thil dawn a, enggemaw ti mai mai a thil dawng a in enkawl tunna thinlung a siam ang tih a hlawhawm a. Chu chu hmun tam tak a siam tawh mok nghe nghe a. Sorker hian duh ang in mi pawh a control vek thei lova. Hei thingtlang hmun tam tak ah hian kan Ruling party workers te chu Pu Speaker, an thiam dan thin ah pawh, Land Use Policy a Rs. 3000/- i hmuh theih nan Congress ah rawn lut mai rawh te an ti a. Chuh ang chu kan sorker te hian an zuk khaw vek thei lova.

Tichuan khati kham politics hrisel lo leh moral a kan hriatna, kan ram aizawna nitin a lonoh na a taima tak a aum thia te pawh khan heisei na dik lo in, thatchhiatna an rawn chhar tan niin ka hria a. Chu chu banson a tulna lai pekhat chu a niin ka hria.

Tin, a point thumna ah chuan, a pawisa chungchaw; thu hrim hrim ah hian kan sorker hian ngaihtuah chiah, chiah lovin, zawh loh nghawngkaw tur an siam niin a lang a. Hai kumkhat ah Rs. 5000/- emaw kha lonchitu family kha lo po ta ang song. Kum 5 chhung khatiang a thil sih thar tur va enkawl na aton khan pek an tun ni a tak a ni a. Chuti a nih chuan chhungkaw pekhat chuan; 5000/- zel emaw a dawn chuan, Rs. 2,5000/- zel a an dawn pawh in Rs. 15, 000/- a scheme putlin nan a mamawh dawn a ni. Chuti a nih chuan Mizoram ah hian chhungkaw 70000/- vel kan aum tih member hrang hrang te pawh an sawi tam hlo a. Kha kha a dawng vek tu tur te an ni a. Chu chuan lo

dawng vok dawn ta ang song, tun plan chhung a tih kim in tum dawn a nih pheh chuan, cheng Vaibelchhe 175/- hman a ngai dawn a ni. Tun plan chhunga kan pawisa hmuh chu chiang tak in India sorkar pawn a rawn puang tawh a. Chheng Vaibelchhe 230 a ni mai a. Tahkhan 175 kha han pah thla ta ila Vaibelchhe 55 chauh thildang a hman tur kan nei dawn tihna a nita. Chuti a nih chuan India sorkar ip min tanpui na plan fund atanah, tun kan Plan hman lai mek a Vaibelchhe 230 zinga 175 kha lukhawng nei miah lovin kan hman, ral dawn tihna a ni ang a.

Chuvangin chhung thlong chuan kan sorkar hian in a chhut chian a ngai kheup mai a. Non-Plan chu engti kawng meh in kan va hman; thei dawn lo reng reng a. Kan sewi fo tawh ang khan hei kan Minister zahawm tak tak to pawn kan sewi a. Planning Commission pawn rem min tih pui a an ti a. Rem an tih pui rau rau chuan hemi tur atan hian, a hrana Budget Provision siam chi tak niin a lang a.

Amaherawhchu kan L.G speech ah te leh kan Finance Minister speech kan en te pawh khan, kum lo kal atan hi chuan fund han earmark a kha Agriculture Department a pumpui a nuai 281 awm ah khan, nuai 105 earmark a ni tih bak kha chu a hrana awm kan hmu ta lova. Chu pawh chu lo ni song, Agriculture allocation 281 atanga 105 sawh thlak rikngawt pawh kha thil famkim leh administration kalhmang a ni chiah lova.

Amaherawhchu a ti tu ton helai ah kan sawk thla a lawm inti tlat a nih chuan, chu pheh chu opposition chuan va relpui theih che ka u kan nei miah lova. Tun kum kal ta te pawh khan kan Development Commissioner in a a hman dan tur ruahman sa chu, forest atangin nuai 107, Agriculture atangin nuai 80, Vety atangin nuai 38, NREP atangin nuai 24.51, SMF atangin nuai 99.20, IRDP atangin nuai 80.28, RLEGP atangin nuai 23.12, Sericulture atangin nuai 6.50 Soil Conservation atangin nuai 39.45.

Tichuan, chutiang a lak khaum chuan in nuai 498.01 kan nei thei chauh a ni a. Hemi in a entir tak a chu Planning Commission atanga a hrang a hrai a Land Use Policy atana pawisa allotment, pawisa sen pakhat pawh awm lo kha, helai ah hian romcheng ah lak khaum a ni to ringawt mai a. Chutiang a lak khaum zel dawn kha chuan, cheng Vaibelchhe 175 lai chhungkaw 70,000 po tur chuan a lo ngai dawn ta a. Chuti a nih chuan kan plan pumpui kha mumal nei lovin kan siam in, kan ti chho vok dawn tihna a ni ta tlat a ni. Chuvangin hei hi kan Minister to leh kan sorkar to hian uluk zawk a Finance ah hian eng ang a harsatna nge ni min tawh pui dawn? Hei hi kan zawh loh ngawngkaw a ni em? tih ang to pawh enchiang

leh turin ka duh nghe nghe a. Chutianga zuk an chuan in point hrang hrang atanga han thir chuan, ho policy hian Mizoramah hian thatna aiin that lehna, heusekna ah ngol-ngehna ah awm theihna intodelhna ah min hræi lut dawn o kan sorkar in min tih lai hian; rethoihna ngolnghet vawih atang rethoih leh zualna tura in hræi tur hi a ni dawn a ni.

Tin, chutih rual ruel a suggestion kan siam leh duh chu, hosi policy kan kalsan rual ruel hian, khawihmun ah pawh hian Economic Planning, mipuite tana hnomhnang tak tak rawn ti chhuak tur hian, chhungkaw mai mai programme pawh a lo hlawhtlin theihna tura a ram in a a busipui a mamawh thil kha tih hmasek a ngai a ni. Chumi atan chuan miran tan ongtiang an lo tih thin ? tih kan zuk an chuan a hmaseber ah chuan power infrastructure, hai kalphatha tha tawk neih a lo ngai a. Transport system tha tawk neih a ngai a. Kawng sui tha tawk neih a ngai a. Tui to tha tawk neih a ngai a ni.

Entirnan ah hetiang hian lo sawi ta ila. Agriculture ah kumin hian chhungkaw tam fo chu Land Use Policy ah hian an thlang a ni. Mahseng hemi Agriculture a an thlan chhungkaw 1346 ta hian lo hlawhtling vau ta sengin, ongtiang in nge thil an tih ang kan tih chuan, an Agriculture producers kha an hralh leh a, chu chu pawise an chantira, kha khan sitar lei leh a ngai dawn ta a ni.

Tichuan, chuta tan chuan entirnan sawthing lo la ta ila, kumin hian sawthing quintal 50000 vel thar dawn ang a kan ngaih lain, sorkar chuan 30000 a la thei ang em ? tih kha a la hre thei love. A market na tur an hmu dawn lo tihna a nih chu. Nikun chuan Quintal 80000 thar a kan hriat lain, sorkar chuan 33000 a la thei chauh a. 50000 vel kha chu market theih leh in a awm tlet a ni.

Chutiang zel chuan thingphua han tih to pawh hi Transport system to kan neih a, a tlawm tak a churhna tur kawngta kan neih that hma kha chuan onpawh lo hlawhtlingin lo ngah mah ila; a market na tur kha a awm lo zel a ni. Chuvangin ho Land Use Policy kan han tih hian Trade chi hrang hrang ah to hian mual tak a market kan pek tur thil tih bik a nih si leh chuan, onpawh hi entirnan Theihai pawh hi Vaibelchhe 500 pawh lo thar ta ilang, khawihmah kan hralh leh chuang lovang. Bahla to pawh hi cheng Vaibelchhe 1000 pawh lo thar ta ilang, Transport system a awm baw si lava, Road Communication a awm baw si loh chuan, khawihmah kan hralh lovang. Chuvangin lonaitu Land Use Policy a hræi loh tuma kan va hræi to pawh kha, an hlawhtling a nih pawh-in ram pumpui

chhungah hian chung an thawh chhuah Lakhuih thoi emaw
Theihai emaw khang ang thil reng reng kha a process na tur
ah power supply kan neih hma kha chuan; dawt a chang zel
dawn a. Technically a thir pawh in, tuna kan Land Use
Policy hian kawng a bo em em mai a. Mumal a nei lova,
Zoram mipui hmasawn kal lai mok tih khawtinna loh tih
behlahna ni zawk tlat in a lang a ni.

Tun, chubakah a supervision
thu ah hian, instruction hnuhnung ber ah kha chuan A.O
to leh V/C te tangrual ten an supervise ang ti niaum tak
khan a ni a. Pawisa chu member thankat in an rawn sawi
tawh a. Agriculture a mi kha chu hmang pawh ni ila,
Agriculture atan kan hmang thova, Voty a mi pawh Voty
atan tho kan hmang an ti tak na a, a semna atang reng
reng hian Department ho kha involve a ni ta lova. Kha
Trade - a mi tuitak kha department in an zirtir theihna
tur leh hmasawn zel tur kha thlan pawh an ni chuang tawh
lo a ni.

A hmalam a an sawi tawh ang
khan a thlan dan hi mumal a nei si lova. Political
selection ni dawh ber hian a lang si a. Chuvangin
department a Technical hmasawna chi hrang hrang beihpui
hruaitu te khan Role an va play thoi ta lova. Chuvangin
supervise to a awm lova, tuna an thlan tawh te pawh hian,
thing ching tur pawh in an ohing tak tak lova, Vawk vulh
tur pawn an vulh tak tak lova, Bawng vulh tur pawn an
vulh tak tak lova.

Tin, khami a lo puilitin huna
market a rawn nei theihna tur pawh kha Department vek in
an buatsaih a ni a. Chutiang ti tur pawh chuan a mate-
rial loh data kha Department in ongmah an lai te si lova.
Chuvangin kawng hi a bo vel vek mai a ni. Minin hama
kan thian ten 'Land Use Policy hi zawng Congress thang-
nang a ni a, tam dawn in thangnang a rawn kai thin a,
chu chu tam in a zui thin' tih ang kha. Tuna mipui awm
ngaihna hre lova lo pawt thoi si lova, kalain tir ang
rang si a, chhungkaw 5000 nia tam siam tawn ringawt
pawh hian in Zoram hi a ti mangang tan tawh a ni a.

Tichuan khawtin ah hian
kal ilangin, kal zel ngaihna an hriet loh thu hi an
sawi sup sup mai a ni. Ruling MLA phoi chuan chung
chu an dawng hauh lovang. An dawn hauh lohna chhan tur
chu an hiau a laam. An nihna ang tak kha an hriih
ngam lo a ni.

Amaherawhchu Opposition
MLA te hi chung thu leh hla dawng tam tu chu kan ni
a. Tin, Department hrang hrang atang pawh hian he
Land Use Policy ah hian rinna an nghah loh zia hi kan
Ruling MLA te khan tuman min hriih lova an ti a.

Hrih theih ni nghal lo chuan. A chhan chu an pute thil tih a ni a, khami sawisel tu tur officer nih kha chu tuman an ngam lo a ni. Sorkar pawisawi mai tur nieh an in ngaih avangin.

Amaherawhohu mi ngaih dan dik tak lakkhawm a, chumi dawng khawm tute chu Opposition lama MLA te hi kan ni a. Chuvangin he thil ah hian Zoram mipute hian rinna an nghat reng reng lova. Tin, kan sorkar hi pan thui zel tur pawh in kan duh hauh lova. Tin, department hrang hrang a thawk tu ang a an ngaih te pawh hian, kan sorkar hi hetiang ang policy hi bawhzui zel turin a duh hauh lova. Chu chu kan sorkar hian chiang tak in kan Minister te pawn lo hria bang ka duh a.

Tin, point hrang hrang harsat ne num thei leh lo lo num tur leh num tawh mok kan han sawi tak atangto khan rawn thir let leh in, he policy hi vawin ah hian tih taup ni thei nghal se tih hi member zahawm tek tak te hi ka rawn sawm duh a. Kan mover Saitual bialto MLA zahawm tek thusawi kha ka rawn thlaup in vote ka rawn dil pui a ni e, **Pu Speaker.**

***PU C.L.ROAL MINISTAR:** Pu Speaker, vawin a kan Resolution Land Use Policy chungchang a kan member zahawm tak in a rawn put luh hi, Land Use Policy a rawn zik chhuahna leh tuna kan kalpui mok dan chiang tak a hrelotan chuan, rawn tih va mai num tak pawh a ni a. A policy neitu ni lo chuan, sorkar policy in brechiang lo deuh niin a lang a.

Hei kan lo neih dan kan hria a. A hahthlak bak ah hian a expensive em em mai a. Tuna kan kalphungah chuan kum khat a kan lo vah chhiat hi kumtin 40000 hectre a average in a ni a. Tin, kan vah chhiat bak hi a kang hnam em em a. Theihtawin ten kan la a. Kang chhe lo turin kan in zirtir a. Kan Member zahawm tek ten hman zan lawk a kan Radio Broadcast te leh in hnen a kan ngenna te pawh kha in hriat ka ring a. Kan vah aia zau zauk hi kumtin a kang chhiat a.

Tin, lo kan han vat a, kum khat kan nei a. Khatanga a chunglang luangral te hi a tem em em a, hei Scientist ten Research an han ti a. An finding hmuh theihin a awm ta a, chutah chuan, kum khatna ah hian lei chunglang tha 40 MT Hectre khat atangin a luangrual ziah a ni. Chuti a nih chuan Quintal 400 lei chunglang tha kan hloh ziah tihna a ni a. Chu chu a uihawm hle a, chumi uihawm leh zual chu thing leh mau kan kit a. Chutianga Hectre 40000 atanga kan han lak khawm rough tak a calculate pawh in cheng nuai tem tak man nuai 100 man aia tlem lo kumtin nei vap ah kan chantir ziah mai a ni. Chumi man zatva pawh

chu buh kan thar ngai si lova. Chuvangchuan kan lo neih dan pangngai hi a rangthei ang ber a kan bansan a ngai niin kan hria a.

Tin, keinin a ram ngaw kan la nei emaw kan tih ai hian in, Delhi lam pang khuan min lo chhut sak viau a. Keini ngaihdan chuan tuna kan ram ngaw lo neih hi 33% niin kan chhut a. Mahsela ngun leh zual a kan chhut in chu chu a ni pha tawh lo a niin kan hria a. 1974 - 1984 thlenga aerial photograph kha an nei vek mai a Delhi khuan. Min han entir a, kumtin in ram ngaw a chhiat den hi hetiang hi a ni a, chuvang in engtingge tan in lak dawn? Forest Department ah pawh sum leh pai chu tam zawk in kan pe ang chu uan ti a. Hei kumin pawh nikum a nuai 250 emaw 260 val min pekna ah nuai 400 lai min pe a nia.

Tiang chuan kan ram ngaw chhe tur danna tur hien tan kan lak tak tak a ngai a ni tih hi min hriat chian pui a, chuvangchuan he kan Land Use Policy pawh hi an han thlir vang vang a, Rehabilitation of Jhumming family a ni. Lo goitu te ram nghet, lo nghet, huan nghet nei tur a kan buatsaih chhehna a ni tih an hriat avangin Delhi a Planning Commission a member te leh Working Group member ten kan plan min thlir pui tute pawh in min phurpui hie a ni.

Chuvangin tuna kan Budget thar ah phei chuan khatianga Land Use Policy a kan hman tur a kha min approved sak vok a ni.

Ka sawi tak ang khan he kan lonoh den thlak hi thil tul lutuk loh thil hmanmah thlak a ni a. Chuvangchuan tan kan lak thuai thuai a ngai a, chumi atan chuan he kan hmalak mak a hi kan tih makmah a ni tlat a ni. Kan Economic Welfare atan a tha lo tih te hi chu, kan member zahum tak lo khan an ngaihtuah ngun loh vang mai mai a ni a. Kan Economic Welfare chhe tawh, ti tha loh tura he thil hi ruahman a ni a.

Tin, a implement chungchang ah chuan thil a tih kim vok theih lova. Hmun thenkhat ah selection han tih pawh khan thlan sual a awm a. Thlak kan ngah a ni. Forest Department ah te pawh chu chu zop tur pawh a ni lova. Thil hi vawikhat ah kan ti dik vok thei lova. Mahsela a tha nia kan hriat chu kan kal chheh zelna ah khan a dik zawk kan hmu zel a.

Chutiing chuan hmanah Congress sarkar in ramzau lutuk neite hnon atangin ram lak sak ila, ram noilo te hnon ah pe ila tih pawh kha thil tha tak a ni a. Mahsela vawikhat lai kha han tihsual douh hlek a awm a ni. A chhan chu ram noilo te hnenam ram pek a, enkawina pek zui lohna hmun tam

tak a lo eum a. Chungah chuan ram neilo, nei thar thut te khan an enkawl mei thei lova, chuvangchuan mihausate kut ah bauk a lokal leh a ni. Narashimha Rao-an a sawi phei chuan, 'Kan tih fuh loh chu kan admit mai tur a nie, kan lo ti fuh lo deuh a, hmanni lawk a ram zau lutuk nei te hnon atanga ram kan pok kha tunah chuan long hand, sum leh poi neite hnonah bauk a kal leh ta kan ti fuh zo tawh a, tunah chuan anmahni hmingin an Register duh lova, an varak hmingta an lui hming ten an Register a. Hoi thuh leh a nar viau dawn nghe nghe a, a ti a.

Tiangchuan thil thawklehkheth ah a tihkim vek hi a theih fo leh a. A thlanna ah pawh hian Forest a tui haoh lots thlan t an eum a, chungchu kan han zout chiang leh a, hmanni a Lungdar a ke kal pawh in report ka hmu a. Hoi kan member zahaum tak Pu Lalawia Birl ah hian loilet nei si, loilet tih puitlin tuma bei lai mak kha Forestry ti turin an la thlang hlawm a ni. Kan D.F.O ka tir phei a, loilet an nei ngei a, khatah khan hna an thawk mak a nih chuan, Forestry ah kan tanpui lo ang a, loilet atan kan tanpui ang. Hoi hi thil tihseal belh niin a lang a. Lo va onchiang la ka ti a. A dawn report leh tawh a.

Chutiangchuan hmun thenkhatah chuan khatiang chhungkaw sangtal a nih tak chuan, tih fuh loh deuh na hmun chu a eum ang tih chu art tur niin ka hre lova. Ka pha lova, Mahsela a tam bir chu vawin ni hian an lum om om a ni. Nikum a kan kuhther report tlem a a tam deuh chhan pawh kha, Land Use Policy atanga tih tak tak a neitute, hnathawk thoi deuh a kan sia a, an tui kawng siamna tute a kan tanpuiina khan rah a chhuah tan niin ka hria a. Kumin kumther a kan Target hi 51000 MT (Singga sangkhat) a ni a. Hoi hi Planning Commission in a min pawmpui chin a ni a. Hethian tanpui in kan khum ngei ka ring a. Chu pawh chu kan khum ngei a ka beiseina tak tak chu, ho Land Use Policy a mi tam tak kumin hian W.R.C ah kan tanpui chho thui dawn a ni.

Hoi kan zinna ah miin holai ah hian tel ka duh e an rawn ti thia a. Mahsela tunah hian mi thenkhat chu Serthlum chin ka duh an ti a. Chuta tan chuan chhungkaw sangtam kan la thui lo. Holai ah a tiak kan nei mai lova, kheng zawn, zawnng daih tur khan.

Chuvangin Coffee ching tur omaw Serthlum ching tur omaw chuan holai ah seedling onzatnge kan nei? kan supply thoih kan exam hmasak a ngai a. Khata tang khan chhungkaw hetizat hi kan la thoi kan tih a, khata tanga kan thlan chhuah ah khan, Coffee ching tur chuan fimkhur loh deuh hlok a ngai a. An rawn thlan chhuah tam tak kha vawin ni ah chuan hnawl leh pawh kan nei a ni. Nikum pawn hnawl kan nei. A chhan chu mi thenkhat in tlak lom nikang

tak te Coffee chin nan an la thlang ringaut a. Khateh
khan Coffee kan tih puitlin sui thai dawn lo tih kan
hria a ni. Chuvangin Trade danga an in sawn thuih chuan,
Trade dang an thlan a ngai a ni. Hetah chuan kan
hlawhchham pui ang che u tih kan hlau kan ti mai a.
Chutilo chuan Rubber ching tur chuan Ft 1500 chunglamah
ram a noi a nih chuan, hetah chuan Rubber i ti puitling
thai lovang. Hai Ft 1500 hnuai ch tan lakna tur hmun
neih i noih si loh chuan, hai hi chu midang hnene a kal
a ngai rih a ni kan ti mai a.

Chutiangchuan finkhur a ngai
khawp mai a. Thil ti puitling tek tak tura tan lak chhoh
pui tumin tunah hian in sorkar a in buatsain a. W.R.C
neite erachha hnenni ah kan Lungpho bial khaw pakhat
Ghhiahtlang ka tlawh tum pawh in, khawtlana hotute leh
V/C ton min lo hmu a, hoti zat hi loilet noi leh terrace
noi kan hmu a, hai hi hno kan thawk mek a, mahse kan
harsa khawp mai a. Hng mite hian tanpuina chutiang
zat chu kumin hian hmu te sola, an ti puitling thai ang
em? An tuikawng hi a titha thai ang em? Chutiang
chu rawn zawl kanum vek ula, in khua a mi zawng chu rawn
thawn thla hai rawh u, kan lo toih loh mai ang. Kumin
kumthar atan hian khawng thlai tiak supply ngai lo, hai
a thawk mawh mawh te ti puitling thai tur te chu, sang
tel in kan lo leh thai dawn a tih hi ka ring a.

Tahchuan Department pawh kan
in buataih zel a, chutiang chuan hlawhtlin tak tek na
tur a hnathawk te kha, nimin lam ah pawh ka sawi tawh a,
kan tanpui a ni. Khatianga hnathawk lem lava Rs.3000/-
dang a; thil dang chhungkaw mamawh lo lei ngawt te kha
chu sorkar atengin tanpui zel chi an ni lo.

Tin, Thonzawl pawh kha hman
deuh khan ka tlawh ve a, Thonzawl ah chuan nikum ah
Rs.1000/- an han la phawt a, khemi kha onggingngan an
hman? An ram chei nan an hmang em? Han verify leh
rawh u kan ti a. Thonzawl ka kal lei a kan affidea ten
an verify na ah chuan, hemi chhungkua te hian Rs. 37/-
man hno an thawk, khawng kha chu kan bensen mai loh chuan
kan ti puitling tak tak lovang. Ah thawk tak tak te
hnenah, Zoramah oi leh bor tur tam zawl kan thar theih
nan mai ni lo; kha chhungkua khan, kan chhungkaw thlan
chhuah te khan eizawna ngolngot an neih a, an tu leh
f te tan ro an siam theihna tur a tan kan lak puina a
ni a.

Chuvangchuan tuna tan lak
tum lo hi sum loh pain kan vur ringawt dawn lo a ni
kan ti a. Chutiangchuan tan lak tum si lava sum loh
pai thildang a lo hmang mai te kha chu sorkar in a
tanpui zui zel dawn lo a ni tih ka sawi tawh a. Kha
kha member te pawh min hrietpui hi ka duh a.

Tin, thingphun hi a hralh theihna tur hmuh a tam mai a. Thingphun hi kum 15 kal ta khen ka pal tuai ah ka hmang a, tunah chuan kung khat Rs.1200/- zel in ka hralh thei ta a. Chuvangin thingphun na zau zauk ka siam duh a, min pui rawh u ti hung khawthlang tlangdungah te chuan tam tak kan hnan ah rawh an lo kal a ni. Khauchhak ah rawhchuan thingphun hi thlang miah suh u, in hralh thei dawn si lo kan ti mai a ni. Kan hralh chieng mai a. Thingphun kha an tan lakna turah kan ngai lo; mahsela khawthlang tlangdungah chuan Cachar Boarder Bullah te leh Silchar tlangdungah te, Tin, Lunglai leh Aizawl kung dung ah ngai te pawh hian thingfak khat cheng khat in kan loi turah mai a. Kum 5 chhung chuan khang thing kha Rs.150/- pui a ni hman dawn a.

Chutiang chuan aizawnnan an hmang ngah thei ang tih kan ring a. Kan hnathawh pui tur te kha engage ni an tuina? An tuina ah khen tihpui chi an ni em? tih pawh kan an zui loh zel a ni. Chu chu kan hnathawh dan a ni a.

Hmana IRDP kan tih tirh a Rs.2500/- te kan pe ringawt a, khatiang a kan tih ang kha chu tuna kan tihdan hi a ni lo. Chuvangchuan opposition a kan member te hian an hnathawh thin dan otang khan ngaihdan an rawn siam a, hlawhtling lo turah he policy an dah ringawt hi chu ka phal thei lova. An hnathawh dan ang khan he sorkar hian hna a thauk lo a ni. Tih tak tak in, a ti tak tak tu te pui chho zel turin a inbuatsaih a. Tun hma a thawh dan ang khan chuan ngaihtuah mai pawh hian a hlawhtling lo ang tih a rin theih a lawm. Khami ang khan chuan rin dan leh ngaihdan rawn siam lo sela. Sorkar in ngaihtuah na tam tak hmangia he policy hi a duangchhuak a. A policy duanna rilru hmang ve lote a nih avangin ka thim khawp mai. An ngaihtuahna helam ah hian an la hmang tam lo rawh a ni Pu Speaker,

Chuvangin he kan scheme hlawhtlin dan tur pawh hi, an suengtuh na ah hian a la thlang pha lo reng reng. He kan Land Use Policy hlawhtlin dan tur a hi, keini a policy neitute hian ken duang tauh a, kan hre tauh a. Mipui pawh in an lawm a, Luh zel an duh a ni. Mahsela a zavahin vaikhah ah kan ti puk puk thei lova. Tunah Cardaman te chu a sing tel in supply mah ila, mi tam tak kan thlang thei dawn lova. Ka sawi tauh ang khan Sikkim aban a tik tur a ni a. Chu pawh chu tunhma a laina chi tih vel ang ni lovin, Alaichi tak tak khumi sorkar non a indawr a, kan lak chhuah tur a ni a.

Chutiangchuan he kan Land Use Policy hi a ngaihna hre lovin, kan suengtuhna ah min tawmpui pha lo ten min sawisolna leh, he policy hi bansan mai ila tih hi chu pawm chi a ni lo reng reng

a. Pawm theih ah pawh ka ngai love. Tunah hian he Policy hi ti hlawhtling tur hian Department tina officer to pawh an phur em em a. Khawilai emaw a lo thawk poih manglo tunah officer tan hna a tam zual ta, supervision work a tam em em a ni. Chutiang anga zawmthaw thatchhia to chuan khawi laiah emaw an lo sawisel an hre palh hlah a ni mai thei. Chutie anih loh chuan kan officer to hian he Land use policy hi mipui tana thil the tur a nih wvangan min phur pui em em a. Tihhlawhtlin tum pawhin hna an thawk tak tak niin ka hria a. Chuvangin a sawisoltu anga mi thonkhat an sawi kha chu khawilalah emaw hnathawk poih vak lo an tawng hlah a ni ang a, kang ang thusawitute kha chu thu tak a lak loh hram atan a the nghe nghe in ka hria a ni.

Awo, hoi ka hun a zo ta tlat a, in hrilhfiash chian deuhah a tha viau a, hei kan inhrilhfiashna hun tur a tam ta love, mi dangin an la hrilhfiash ang chu.

PU F. LALRABLIANA : Pu Speaker, New Land Use Policy hi policy tha lutuk, thingtlang mipuite chawikanna tur leh eizawna kawnga awlsam zuka sorkarin policy tha deuh an buatsaih hi Pu NLUP-a khan tha ka ti love te a ti ngawt a. A policy hi chu tha an ti a ni tih a chiang a.

He Policy implement thuai thuai tur hian thingtlang mipui ten an nghakhlal em em a. Tin, chutiang deuh bawk chuan Department hrang hranga kan officer to pawh hian implement thuai thuai hi an nghakhlal in an thlahlel em em a ni. A chhan chu Mizoram mipuite hi thingtlanga chong deuh vek kan ni a, thingtlanga chongte tih changkan chu kan officer to loh Department hotute reng reng hian an thlahlel a, an hmanhmawh bawk a. Chuvangin he policy hi sawi chhiat theih pawh niin ka hre lo. Sawichhiat pawh tum ila kan sawi mawi deuh deuh a ni zel main ka hria.

Tin, a thlan dan chung chengah an buai deuh ber niin ka hria a. Kum 6 lai kalta khan P.C. ho chuan mahniin tui takin mei an zu veng veng a, onglikeh ngo kan mipuiten an zuk ve ang tiin nghakhlal takin an nghak fun fun a. An zu ve chhin a, pak hnih khat chu an pak a, chu pawh chu an itsik leh zel a ni a. Chuvang chuan a thlukah in buai mai mai a ni.

Tin, entirnan a thlan chungchong an hian kan sorkar hian thil thar nei e ti lo chian, thil pawh a ruahman fel viau in ka hria. Hei base line survey ka bial chhung ami, kei pawh a copy min pe a, chung an chuan sorkarin ngun takin a thlang a. Chhungkaw khatah puitling engzatnge aum? Naupang engzatnge? Tin, an main occupation engnge ni? tih te. Tin, sorkarin tanpui tum ta sola, ong Trade hi ngo an duh ber? a pakhatna, pahniha, pathumna - chutiangin base line survey to pawh fel tak a aum a. Chuta tang chuan DRDA in recommend a siam a, chu chu sorkarin alo approved sak mai a ni.

Tin, thingtlang khue ah to pawh, Aizawl leh Lunglei District te ka hre chiang love, Chhimtuipui District ah chuan khaw khata sorkar hnathawk - entirnan Middle School Headmaster chian chunglam chu Chairman ah an aum a, Vice-Chairman ah Village Council President. Tin, Village Council Secretary kha Secretary an ni nghal a.

Political party a President te kha member an ni vek a. MHIP te, YMA te kha member an ni bauk a. Sorkar hnathawk aiauh pawh member an ni bauk a. Chutichuan fel tak in committee neihn recommend na an siam a, an ti fel tawk em em a ni.

Amaherawhchu chungah chuan tih fel loh palh deuh te pawh a aum mai thoi a. Tunhma a Lungloi bieltu zahawm tak in a sawi ang khan, Road Communication siam nan ah tunhma a an pawisa hman angin hmang loh te ila, kan budget reng reng hi mi tlem te chauh in an chang dawn a. Kawng an han lai a Km khat guai 15 te in an lai zo thoi tawk a, motor kal theihna tawng tawng in. Chung ai chuan hei New Land Use Policy ah hi chuan mipui tam takin an chang te zauk a. Thingtlang khua ten tak tak in Budget tuna kan pass loh tur te hi an hmu dawn a ni.

Tin, nichina kan Forest Minister in a sawi tawh ang khan, Forest chhu tawh lutuk te siam that leh nanah pawh New Land Use Policy a pawimawh em em a ni tih a sawi a. Forest, ramngaw thingte phei chu a tlem em tawh a. Chhim lam ah saum tlem in a la aum chauh nghe nghe a. Chung kan Forest humlah theihna tur chuan ho New Land Use Policy hi kan sorkar in a ti chhuak pawh a ni bauk a.

Tin, kan sorkar in thingtlang khaw mipui te ten a tih that em em chu, kum khat ah Rs.3000/- a pe hmasaber dawn a. Entiran Quintal 15 vol buhfai an loi thoi a. A thlawn lieu lieu in sorkar in a chawm phwet dawn a ni. Tichuan an cizawna nghet a buatsaih dawn a. A then in thing an phun eng a, a then in loilet an siam eng a, a thenin Vauk an vuh eng a. A thlawn lieu lieu a sorkar in a chawm hnuah mahni ei bar zawma an zawng dawn a. Tin, an tin that zel phei chuan sorkar in a unkawh chhe zel dawn a. A thlawn a chawm, mahni hnathawh tawh chu a hlu ber a ni lawm ni? Engahnga ken thingtlang mipuite mirethei zauk te chang kang tur hi kan itsik tlet a ?

Chuvangin netianga kan thingtlang mipuite changkanna kawng dal tur a rilru chhe douh kan pu hi chu Pu Speaker, a zahlak lutuk a ni. Pu NLUP a pawh khan ho Resolution hi withdraw mai rawh se.

(Pu K. Biakchungnunga - Pu NLUP - a tih mihring an aum dawn a nih chuan, a dangab chuan kan Minister leh Mamit bial MLA zahawm tak in an duh chu ka hria. Chuvangin)

Tin, hei tuna New Land Use Policy ang douh bauk hian department hrang hrang

Vety te, Agriculture te, Soil Conservation te pawhin tun hma in mipuite tlem tlemin an lo tanpui tauh thin a. A enkawtu tur pawh anmahni bauk an la ni dawn a. Amaherawhchu sorker hnathawk te an indaih tauk dawn loh avang in sorker in tan a lak a, khawtina a hlawhtlin theih ngoia turin A.O te V/C te pawh in an enkawleng tih te a la'rel leh zel a. A venna pawh a siam theim em a. Chuvangin he policy tha lutuk, a tha lo ti lutlat te hi chu kan ram hmasawna dal tu ah kan ruh lo thei lo a. Tin, an ni leh bauk a.

Tin, a thlan dan chungchong ah khan in kumkhat ah mi tam tak a thlan theih lova, amaherawhchu kan sorker in a ngaihtuah la thei lova, tlem tlem in a thlang chho zel ang a. Kum engagemaw zat hnuah chuan in duhsak zawn pawh duhsak loh zawn pawh, an duh emaw duhlo emaw thlan vek tur an ni reng reng. He policy hi huapzo tak a ni nghe nghe ang.

SPEAKER : Hun safe nan NLUP a kan record dawn lo. A rawn chuang vek ang a, NLUP tih record a aum pawh in a kai tawi a ni dawn a, a tha viau a ni. Tunah Pu Lianchia kan sawm ang.

PU K. L. LIANCHIA : Pu Speaker, sawitur vek chu ka hre lova, amaherawhchu tlem a zawn tal chu sawi ka duh a. A policy ngaihtuah chhuak tu ringawt thei chu ka dem hrampa hauh lova. Amaherawhchu thil reng reng hi han sawi a aum a, a tih a tih a aum a, khelei zauk kha a pawimawh lai niin ka hrie a. Miin rilru hah tak a an lo buatsaih kha, kha hrim hrim kha sawichhiat ka tum hauh lova.

Amaherawhchu thil thei hi tha ve ringawt, tha ve tlawngawl, tih theih lom loh a aum a. Tuna kan policy pawh hi thingtleng mite hian, hetiang lo pakhat nei a an sizawna ah hian hlawhtling tak in aum thei dawn sang chuan, duhlo pa an aum ka ring lova. Amaherawhchu thil reng reng hi vanram kai pawh a tha a, tunah hian nungchanga duh duh a kai theih pawh a tha.

Mahse kan thei lo ang deuh hian, kan va tih tir tum a te leh a ti tu tur a te zir hian, thil hi a tih theih in a tih theih loh bauk a ni. Entiran ah Contractor tam tak an aum a, ropui tak a hmasawn chova, in ropui tak leh Mizoram hausa ber nih an duh hlawm theuh va. Mahse a titu leh a tih theih dan kha chu a in chen lo ang deuh hian, thil hi a theih dan leh dan loh hi a pawimawh zauk a ni a.

Nichina Lunglai hialtu sawi ang deuh hlek khan a pakhatna leh chuan, a policy hi ka hmuh dan chuan Economic liability a awm lo reng reng a. Thingtlang mi kan zuk chhawmdawl tum a to aumdan leh an tih theih chin tawh ang to hisop a ngai bawh a.

Chuvangin rom ngai tur hi a ni phawt mai a ni a pawimpuh hmasabar ah chuan. WRC neitute zawng zawng chu kumkhat chhungin improvement siam tir an ni ang a, chuta thei lo chu an rom chhuhsak a ni ang tih kha tehrik ni 24.10.84 ah in rei tawh a. Tunah hian kumkhat aini a rei deih tawh a. Chutiang rom ruak nei an tam lutuk a. In la ti rang reng lo. Kum khat chhung in khatianga kha zawh a, an tih theih loh chuan acquire sak mai tur, a thawk thei to hmasa pek tur in tih, in rei atanga kumkhat sia tam a rei tawh a. Chu pawh chu a rim pawh kan lo hre lo. Rom ruak thawh si loh, Aizawl mi hausa in khawih ngam loh tur to ta a tam lutuk, in han fail chaw phawt a. In fail dawn ni lovin in failed tawh phawt a ni.

Entirnen - chutiang zel in a lo kal chho a, nikum ah mi tlem in thlang a, chhung in mi thlan to tih tur a in tuk to chu, "Kei leh ka chhung to hian he rom lo chu lo dang reng reng kan noi lovang", tiin thu tiam tir vek tur in ti ta a ni. Chutiangchuan ziak chiang bal in Cabinet decision atanga in lek chhuah chupawh chu in tih tir bawh lova. Chu chu ngaihtuah ula in failed phawt a ni. Nikum ah in tih tir reng reng lo kheng kha. Tun huah a chhungten Jhumming hi an ti tawh ngai reng reng lovang tih kha thu an tiam tir tur a ni. Nakin in future reng reng ah Jhumming an ti tawh lovang tih an tiam tur a ni tih kha, in ti lo. In failed loh a ni.

Nichinoh Thenzawl a miin Rs.37/- man lok a thawk a ni an tia, pek zui zel tiak a ni lo in tia ni. Pe zui lo ula, kami thutiam kha lo tiam tawh bawh sela, khawng in dah hawn a nih loh? Daw in ba whchhiat a ngai ang. Jhumming emaw in tih tir leh tel lohva, pawisa in pek zui tawh bawh si loh chuan, chumi rethei pakhat in siam phawt a sin. In siam dawn a ni lo; in failed tawh a ka sawi mai a ni. Kan failed tawhna ka sawi mai a nih chu. Chuvangin khatianga chhui ringawt pawh khan a fail ringawt pawh khan a fail dawn ni lovin; a fail mek a ni tih a chiang em em phawt a ni.

Tin, chulo loh ah chuan, nichin an sawi tak ang khan thingtlangah han kal ila, lonci tu to dinmun kan hria a ni. Aizawla thanglian a, Aizawla seilian ringawt chuan an hria loh pawhin ka thiam viau a ni. Keini ang thingtlang a hre thlo a seilian chuan kan hrechiang a ni. Vawin kan bial dinmun to khi han an ula, kumin ah lovah tur an

pawt vek tawh a, October ni 15 hmain an pawt a, tunch lo nghet tur in han pe leh si a, kumin a ar lo neih khi lo nghet ah an nei dawn nge ? khibak khi lo dang kumin ah an pawt leh dawn tih khi in chiang miah lovang. Ram kha compact area a awm mai si lova, khawmaw lai loi a tla hrangin an nei ang a, chumi ah chuan kumin a Rs.3000 in pek kha ropui in ti hle a, arepui o, Thingtling mi rethei te tan chuan. An laumtui awm a ni. Nakumah in pe leh a ni mai thei, mahse kumin a neih kher kha an chul rap mai ang a, chumi chu an hai karh karh ang a ei an zawng dawn ta a ni.

Chuvangin kheto kumkhua mai a chhungte leh thlah zel tona ti han zawng a, ram dang Jhumming neih phal reng reng tawh lo tur leh ka nei tawh lovang tih thutiam tir bawk kha, han ngaihtuah chiang mah teh u, fiamthu kan tih thin hi thudik a ni dawn tlat. Tunah Congress mi ka ni tih evangin a hlang hlang ton kan thlang a. Rs.3000/- an nei a, an krum-thlangpa chuan a awt hlo, awhawm pawh a ni.

Amahereuhchu lo ngai reng mah ula, nakinah M.C emaw an lo sarker ve ang a, chung chuan khawng tak in rawn kong tlang ta sela, ken Congress unauto kha chu heti zah an dawng, thawk thei tawh si lova tawp leh tawh si te kha, E, ram dang neih awih tawh loh tiin in sig, tawh alaum, hetah in awm ngai tur a ni an tih chuan, tih ngaihna in hre tawh si lovang a. Serthlum an phun pawh a nung si lovang a, a phun nung chhun pawh in hralh ngaihna an hre si lovang a. Ti khan khangmi te kha tuna in Economic policy hian a phuer ang a, hemi hnuar rawn sarker leh ten khawng tak a an ken tlang ngat chuan, in mite hi chul rit rethei ah in dah zo vek dawn tihna ang lak a niang.

Chuvangin kan thingtlang mipuite tlintawk lo pakhat area in pek a, an ni leh chhungten nekin zel a Jhumming dang neih awih tawh lova, an chatuan lo neih tur a han siam hi, thutiam sign tir te pawh hi a hlauhawm lutuk a ni laum ni ? Chuvangin a Trade hrang hrang te a ri chu a mawi viau mai. Tin, indusak tak tak a nih chuan in thinlung chu dem lo ila, a practicable lo tih chu a chiang a ni. A thlan tau ah ringawt pawh kan kallei chuan mahni aizaungne thlan tur an ti a, in trade duhzaung rawn report ah, an ti a, thlan tur ka hre lo, in duh zawng zawng ti nei reh u an ti mai mai a ni. A bul atang pawh a thlan ngaihna hre lo chu kan in chhawm nung mai mai dawn lova.

Chuvangin kan ti dawn rau rau pawh nisa, hotianga WRC nei hote hi chu mi fol deuh tan chuan hlauhling na a awm mai thei o. Mahsela thingtlang ram ringawt nei a, kan mipuite hlauhling

zol tura tihna hi chuan, an thil chin kha a zaurhna te an hmu leh dawn lova. Vawin ni a Sawthing chhete kan thar pawh kan buaipui a. A hralhna kan hmuzlo, mualpho pui te hian, heng Trade chi hrang hrang, thingtleng kil khawr te te Bawngvuh te, Ar vuh te, thlan tur dang hra hek lo, thianto sawi hnunung apiang mai te kha, han tih hlawhtlin kan tum te hi a titu loh in kan zir love, kan chhawn nun tur te pawh hian, nam te a kaihhruai an ngaih lei hian kan pal baurh baurh mai si a, engnge ni hei hi a awmia tih pawh hriat a her a.

Chuvangin hei hi Economically in a theih loh reng reng. A thu hian a mawi ringawt a ni. Ti dawn pawh ni ila, entiran - selected few ah Khan experiment te emaw han nei ila, Mizo chu in tihmuh mi kan nihna lam ah Khan, kha kha a hlawhtlin chuan zawi zawi in ti zau dawn ta eng ila chu, a tih dan kawng pawh zawn thiam theih, in ka ring a. Land Use Policy pawh lam thiam lo, engnge a nih pawh hralo, Rs.3000/- it in an intansiak a, kan in vaw kah lo chhah mai. A pawisa kha a ni an duh. A policy kha a awmia loh a nihna hi an man tak tak lo.

Tin, chulo leh ah chuan a thlan chhuah bauk kha ka sawi leh duh a. Heng ah hian Chiang tak in a in ziak a. Informal village committee thlan tur chuti khati in ti a ni. Instruction pawh in pe a ni mai thei. Ka bialah chuan khatiang kha pakhat mah a awm lo. Sorkar hnathawkrchuan hriat pawh an hro pha lo reng reng. Nimin emaw a kan Minister concerned zahawm tek in a a thlan dan dik tak han sawifich teh an tih pawh Khan, a kha a chih a ni dik tak chuan. Ho tah survey an ti dawn a, a ngam awm tak tak si love, Informal village committee an ti dawn a, ngam awm tak tak mang lova; hetu thukhat ten an rawn thlan tih kha chu a dik mai thei a. Base line survey non a inmil loh zia chu. Base line survey list loh hetu thlan list kha han an ula, engnge base line survey in hmanna? A mawng phah atang Khan thian choh tur misala, dawt bu a ni ringawt a, a awm miah lova. IRDP atan ah tu pawh Interim special committee kan ti, base line survey kan hmang dawn in ti.

Chuvangin in IRDP thlan te chu base line survey atanga han thir chuan chhim leh hmar eng a ni. Chuvangin thil reng reng dawt, dikloh na leh rinlohna a tan hi roqui tak a zi chhuak ka hre ngai lo. Chuvangin thingtlanga an thian dan te, Congress hetu emaw, V/CP emaw kha Khan a rokin laina te an taleng a, chung chu in pawm a ni tih vawin ah Chiang tekin a hriat theih a. Heng lei atang te pawh in phuchhawp a awm a ni tih a hriatna chu, Chawngtlai te, Tualto -a an thian te kha han an ila, Pa hming pawh awm lo, an pak trade fill up loh te a awm hon hun mai a. Tute emaw an hming hriat zawng an so tih a

hriat lutuk tlat a ni. Chuvangin hetah kan tum a, tha e pawh ti mah ila. An kai chhova, a thlan danah te hian in ngaih a tha a, mahse tur lo phultu an aum zel a nih hi mau. Mi pali mai pawhin an phul lo, tam lutukin tur an phul leh ngah a. Dam chhuahna tur Damdawiin kan vang him zâ lovin ka hria a. Chuvangin hei hi a tih tlak dawn lova, moral corruption, dik lo taka pawisa neihna tura intlen-siakna policy, Zoram moral corruption, Mizo mipuite thinlung tihchhiatnam mai a ni dawn e. Pawisa som inzirtir ringawt hi zaung thil tlo a ni love, a result tor ho a Chiang ema kan hriat avangin tur phul zel tu tur hi an tam em dawn tih hi a Chiang reng mai si a. Chuvangin Pu Speaker, hong thil hi thil dik lo reng reng tih hi thil Chiang a ni bawkin ka hria a. Entirnan, Saina bialtu zahawm tak khan a rawn sawi uar view a, thil tha lutuk, hetiang duh lo chu ram hmelma in ni ti eng lain a sawi a. Amaherawhchu kan thlaphan em emna chu amahai bial lam ngei Lawngtlai CD Block te kha ngun takin han en ula, Chhimituipui kai Kaisari ah chuan In li (4) chauh a aum a, in hnih (2) chiah miin an lush a ni. Chutah chuan mi 42 an han thlang thei tlat mai a ni a. Khawia kal tur tak ni mau. Han chhiar ula Lawngtlai CD Block inthlanna serial number saw 64-105 kha han en ton u. Tuipui Ferry kai an ni vek a ni. Khawiahnge kang pawisato kha a kal dawn.

Tin, han sawi ta mai mai zel ila, kan Deputy Speaker nupui ngei pawh hi, anmahni khua Sangau ah chuan a lang tlat mai a ni, Land Use Policy-ah. A hming pui hming dang an zaung a, an hmu zo si love, an mang ang a ni. Niminah kan Minister zahawm takin Sorker hnathawkte hi thlan theih an ni em tih zaun nawn pawha a chhang thei hauh lo kha 'sual inthup' a aum tih hi a Chiang a ni laum ni? Kan Deputy Speaker pa ngei pawh IRDP chu pek mai a ni a. A nupui Land Use Policy-ah an tel leh bauk si a. Eng base in nge kan thlan ka hro lo. Vut buak lai makpa ka bo map mai tih eng deuh kha a ni ta. Chuvang chuan ngun takin ngaihtuah ula, Vawmbuk VCP fapate naupang ve ve to kha in thlang tel ringawt a. Tute ngo an chhungte? Nakin zela jhummung nei lo tu turte pawh chu tute nge ni ta ang? Kan khawih chingpen hnah lutuk a, hetiang tan hi ropui takin kan zo lovang, tisa in kan tan a, thlarauvin kan zo hauh lovang. Farm nei tha pawh ni se in khatah hetiang naupang hminga pa ber hming pawh ni love pek ruk auma thlante kha a dik a mau? Chu chu in hro duh a nih chuan serial No. 131 leh 144 Sangau a mite kha en ton u, Chiang takin kan hmu a ni. Primary zirtirtu thawk laito in thlang a. Sorker hnathawkte thlan theih a ni em tih an han zaun luhin kha a chih si a. Nizan lamah tal zen mutnaah ngaihtuahin in chhang thei tawh mai laum ni?

Chuvangin hetiang ringawt mai a thu tha deuh sawi a thu tam tak sawia tlemte thawh a tih chingpen si ah hian kan ram mipui kan inngat a nih ngai chuan kan nekin hun tur hi a lungngaih thlak lutukin ka hria a. Chuvang chuan tam tak sawia tlemte thawh ringawt chuan kan ram hi khawiah mah kan in thlen lo ang a rilru chhia a mai a pawisa hmuhna moral corruption ah a chhiat tah lul pen, chumi chhiat leh zelna bak chu rah chhuh a nei dawn lo. Chuvangin kan thil tih dan hian a thlak tlat. Pu Speaker,

chuvengin mitthi, kur 10 aia ta thi tauht, kna hu land use policy-ah hian thlan a aum maw lo. Vamouk khua a mi Pu Khuaimawnga chu 1974 April ni 14 a borel tauh kha, serial No. 127-ah kan la thlang ta hram a. Chu chu mitthi khaih tauh theihna power an lo nei tel nga ka hre lova. Chuvengin kan huap zauh dante pawh hi ka huap pel te pawh a ni ang a, huap pel Sorkar te pawh a lo ni ange. Chuvengin heng hi ngun taka ngaihtuah a ngaiin ka hria a. Chik zauka a phase system emawte ngaihtuah that loh a, hei hi chu drop hram turin a bul atanga ngaihtuah that loh turin kan Sorkar hi Pu Speaker ka ngon tak pawh a ni. Ka laum a.

SPEAKER : Awa, Pu Liansuama'n sawi sela. Hei lan' use policy kan sawi a. A Minister concern in awn sawi ve sela, i duh tauk dawn toh ang.

In sawi dan a chikim viauin ka hria a. A chhan chu pakhatah kan nileng mai dawn klawm.

PU LIANSUAMA,
MINISTER.

Pu Speaker, hemi sawi chungchang thuah hi chuan remna ah leh muanna chungchang thu tih loh ah hi chuan kan ram atana thil pawimawh ber a nih avangin ni dangta pawh kan nei bawk a, kan sawi thauh ang chu mawle

Pu Speaker, tuna kan resolution move chungchang thu hi nichina han tihdanglam zauh ang khan a theih chuan han tihdanglam hret pawh ka duh viau a. Amaherawhchu a tauw lamah rawtna ka la aian ang a. Kan MLA zahawm tak takten thu an han sawi atanga ka rilru a thil pakhat lo lang Sorkar department hrim hrim kan hmuh dan a hi engtingge ni aw? Ka ti a. Agriculture Department atan cheng chuti zat, Soil Conservation atan cheng chuti zat, Education pawh, Department hrang hrangah cheng engzat pawh lo aum so, a tauwna chu mipuite tan yok a ni. Agriculture Department a pawisa hi Agriculture Department tan ni ngawt lovin Mizoram tan a ni a. Tah chuan Department hrang hrangte hian kal tumdan an pawisa, thankhat chu family oriented scheme a aum thei a, thankhat chu community oriented scheme pawh kan ti thei ang chu.

Entiren atan - Electric Department te, PHE te, PWD angte pawh hian an theuk tha hlo selang, a zar vantlanga kan zo chi a ni a. Tin, Agriculture te, Fishery te, Voty Department te angte ni chu, minimalin eizawna ngel ngoh theih zelna tur kang direct-in a kawka. Tunah pawh kum hui leh tuna kum kan hman mekah pawh department pawisa huk khawm thin anga kan insawite pawh hi public work atangin chuti anga huk pen a aum lom lova, Education atang pawhin huk pen a aum bawk lova. Amaherawhchu Agriculture a lo nei mite an tanpuina reclamation ah te terracing te, coffee plantation ah Horticulture plantation chi hrang hrangah family an thlan thin ang chiahin kan kalpui ta a ni. Department in an tih tho tur kha kan kal

ngilpui chauh a ni zawk. Heti laiah hian Department then-
khat pawisa va sawk thla ta hlawk a, a hrampa a va pe ta
kan ni lo reng reng a, chu chu kan ngaih sual pakhat niin
a hriat a.

Tun lain kan ramah a bikin Aizawl
leh Lungleiah ta hian khawpuia pem luh kan uar ta hlo a.
A chhan chu thingtlanga kan ai zaunna hna ah hian nitina
kawla ni chhuak chhiara kan feh a, hawp khawp kan thar
mang si loh avang hian khawpuiah inhlawh fakna the deuh
a aum lewm maw tiin miin luh chawp turto zaungin kan lut
thin a ni a. Rethai deuhin Aizawlah leh Lungleiah leh
khawpui deuh ah kan han pem lut a, fin ai takin thil a
lo awl ai bik lova, a chang phoi chuan pem chhuak leh
pawh kan aum chawk a ni. Hong zawng zawngto pawh hi tuna
kan policy ropui tak new land use policy hi kan tih puitlin
hunah chuan hami problem of urbanisation pawh hi thui takin
a tikiang dawn niin a lang.

Tin, nichina Lunglei bialtu MLA
zahawm takin a sawi thuak thuak an a kum 100 to ngat hi
chu kan ram mipuite hi chu, a bikin lo neitute, thingtlanga
thing leh mau vat a, halraitute ni min han chawm seng,
tun atanga kum 100-ah hi chuan kan ram hi a va han mawi
leh dawn em. Khulai Silchar bul lauk Pench-grama paper
mill te chawmna tur atan kan va hnienghnar dawn em tiin
ka ngaihtuah a. Kum 10 chauh pawh, kum 20 chauh pawh fai
hawta Sorkarin min chawm a, kan ram tingaw leh ilang
chuan nungcha te pawh kan hmu tam leh thei ang a, eco-
gical balance te pawh a lo dik ang a. Chuvang chuan rei-
thoihna khara in hnuh luhna ni lovin khawizu leh hnote
tuia luanna tur policy a ni zawk tih hi a chiang hlo a
ni.

Tin, morality-ah min tibniem ang tih
pawh kha a tlangpuiin kan pa chhiat tak hlawm em avangin
kan iy to hi a ta a. Tunhmain Lallen khua an awp thin a.
Mirethai zualte chu chhuan chham leh hak an chhamin vohbur
an khawn sak thin a. Chutah chuan chhuan chhambe, hak
chham te an ki khawm a. Lal leh upaten hei hi lo ha teh u,
an tih pawhin tlawngaiin vohbur khawn sak nih an duh loh
thin kha aum thoi tawh lovin kan pa chhiat a, kan morala
tla chha ta an em a ni. Chuvangin hnam ang a kan huasen leh
nan dikna kan the ngam leh nan te chung tin hian Sorkar
chawm ngai lova mahni kan inchawm chhah lehna atan he
policy hi sian a ni a. Moral re-armament atan pawh hi
hei hi a the hlo dawn a ni.

Tin, kan pawisa hman tur plan chungin
cheng vaiblechhe 230/- tih kha hriat sual pah a ni a.
Cheng vaiblechhe 260/- a ni nghe nghe a. Ancherawhchu
tunhmein Lunglei bialtu Finance Minister pawh lo ni tawh
chuan thil a hre thiam hlein ka ring a. Nikum 7th Plan
intan kumah cheng vaiblechhe 48/- kan nei a. Tuna kan
budget ngaihtuah mek hi vaiblechhe 58/- a ni ta a. 20%
ainn a pung hret a ni. Chutiangin lo pung chha hret hret
se, 7th plan tawh chuan vaiblechhe 360/- lai kan nei
dawn tihna a ni. Nichuan 6th Plan tawhah phoi chuan 20%
kum tina pung zelin vaiblechhe 395/- kan nei thoi dawn
ta tihna a ni a. 6th plan leh 7th Plan chungin kan nei
tur plan fund laau liaw pawh 20% pung chha tura hisapin

vaibelchhe 175 vel thingtlang mi retheite, kha ni chhuak chhiara tukhina rethei taka fan to kha khai chhuahna atan chuan a tloem hlova ni. U i taw a em yang reng lo.

Tin, chu chu lo nah hpa a kha te lo ilangin an a dinhmun hi kan chawiken sak chuan, a jet ? Electric ong te hi chhun ang rengin eng, kan kawng chung zawngte hi kan Deputy Speaker hmaminla swa a ni kin rulgana pa ang main Mizoram dung loh van chhah hian kan zuar mah eeee selang fairal bel ruka an kan a chuan eng aawzia aaw ang lo ? Tin, a reng thuch land use policy kan implement chhahnaah hian Electric Department a ni, PHE ah te kawng chungchang thuch to soil conservation to kan hlam chhah chuanga hleinam a ni lo ! dik tak chuan school deficit chungchangan to tin, power generation ah te, grid power kan hmuh belh den ah a hian kan belin tun hma te ngaihtuah chuan kan theng chhe hio a ni laum ni ? Chuvangin infrastructure siam phuisai hian theih-tawsin kan tang mak a. Tunah chuan serthlun pum khat Rs. 2/- to balhla pum khat pawh a tloem pum khat a ni a. Engtingge maw hralhna kan lungngaih tak mai lo ? Artui pum khat pawh cheng khata lei tur kan hma zo ta meuh lo ar Kg khatah Rs. 40/- to Rs. 50/- to a ni dawn ta mai. Chuvangin hralhna tur lam hi zawng a lungngaih thlak lo tawp ang.

Hman ni lawkah USA atangin tlangvel pakhat chhuti in a lo hawng a, ram hausa tawh zauka ah te chuan artui dozen khat hi an tangka in siki thuch a hu vel a ni, a ti, an la hausakpui hlo thei a ni. Chuvang chuan keimahni ram intodolhna tur ringawt pawh hian a ni vulh dawng vulh scope hi a la zau em em a ni.

Tin, chu bakah a imploment chung-changah rilru tih chhietna ni lovin zaumbhwa taka a rka tanpinate lo dawng thinto tawp tawh zauka tawin village ricord (chhungtin record) kan siam mak a. Kana in tangka hmuh te, nakuma an hmuh loh zel tur to, hetling chhinchhiah thlapa a nei apiang an pek chu aka pek beln to dawn a ni.

Tin, kum 5 kum 10 lei dah tur a ni a, Mizoram pum thlawp chhuak tur kan nih avangin chhungtinte kan tanpui theih vekna turin kaminan Rs. 5000/- ni te selang, nakumah Rs. 10,000/- a ni thei a. Kum 1991 velah chuan kan inthlang kim thawkhat ang a. Tichun kan hmase bor lama kan thlante kha chu kum 6-na ah chuan tanpui an ngai tawh lovang. Chutiang chuan 1994-96 ah chuan hpa programme hi a tawp tawh ang a. Tah chuan kumtina kan chhah loa mau halral dur dur thin hi a tawp thei tawh ang tin hlo tak kan thir zawk a ni.

Awo, hmun thonkhat chuan thlan dan dik lote pawh a aaw ang. Tin, a ni chhuamuan a han tihto pawh kha hming in ang hi an lo aaw thei mak a, chungto pawh chu a ni thei a, tin, a lo nih pawhin tih tih tarh kumto pawh a ni a. Engpawhaise helai tak hi kan tan hpa ngaihtuah a ni a. Chuti taka policy hlauhawm a nih chuan kan aial thuchah hian kan mi leh sate bik chhah hma lo turin in zirtia ang a ni.

Amaherawhchu entirnan, kuminah thei kung 50 vel kan lo noi ta a. Chutah a kung 200 tal chu han phun belh leh ilang chuan kan chhungkua kan chaum ve thei tawh tur. Kung 500 tal phun belh leh thei ilang tia thil tih puitlin duh harsa site kha tanpui kan duh a ni. Sangha khawina tura tuikhuah neite tan chuan sorkarin faisaa * min chaum theih chuan kum tluana kan nupaa kan thawh chuan, he tuikhuah hi kan siam ang a kan ti zawk a ni. Rs. 3000/- vawi khata pek hnawk ang chi a ni lo. Amaherawhchu vawk vulh chungchang thua te chuan vawk te 5 emaw 5 emaw an lo lei thei a. Nupaa buaipui tham a awm ta a. Kum tawpah chuan sum 5 sum 6 an lo ni thei. Note pawh an lo hring pung a, tichuan ~~aa~~ kan chawi kang tlang dawn alawm le. Tah chuan kan bial mite pawh ziritir ila, i ti tlang ang u tih hi opposition te ka swanna che u a ni.

Tin, sorkar hnathawk thlan chungchangah, Peon te, 4th Grade te leh mi dangte pawhin, pa ber an lo ni a, an fate kum tling tawh, hnathawk thei an ni, sorkar hna hmu ei lo an awmte chuan nakin lamah chuan thlan te pawh kan la thlang zel ang a, i thik lo teh ang u. Tunah chuan a la theih loh a, tihswal palh te a awm a nih chuan. Tin, helaiah hian rethei apiang thlanna chu IRDP programme a ni a. Tlema tipuitling thei awm thlan hmasak pawh hi a pawl lova. A rethei apiang chu IRDP ah a inkhung vok thova. Land Use Policy ah hi chuan a rethei apiang a ni ngawt lo a ni tih hi kan member hote hriat atan a tha a ni. Kan thlang mek tho. Nimin lawka in zawhnaah pawh, tunah pawh kan thlang leh zel dawn a kan tih kha chu a inthuah awm lo turin kan veng chho mek a ni.

Tichuan helaiah base a line survey ah pawh khan Saaha bialtu zahawm takin a sawi ang khan training chhuak tawh ei zawn puina turin engeni a duh zawng? Entirnan - puan thuih em ni? La phiarah em ni? Eizawnaa ngel nghet an neih theihna turin ho programme hi tih a ni ta a ni.

Tichuan helaiah kan resolution rawn pu luttu khan phal se chuan detrimental tih lai tak kha 'special' in thlak ta theuh ila.

Tin, chu bakah helaiah a tawpna ah khan abandon tih aiah khan continued indefinitely han tih tura rawn pu lut niawm takin ka hria a. Chutiang chu a nih chuan kan zavai hian kan tang khawm dawn a ni. Chuvangin zik tluak taka in hriat loh avangin in rawn sawi pawt a ni mai a. In hriat loh mieu chuan sawi pawr awm tak pawh a ni a. Engpawhnisela in hotuta kan awm chhung hi chuan a hre Chiang zawkte ~~hi~~ hi min rawn rawn ve duh ula chuan, kan lo hriahfiah ang che u. In bialte in enkawl chhoh dan tur chu ka lo ziritir dawn che u nie, ka bialah pawh chu tiang chuan kan ti mek a ni. Ka lawm e.

PU ZAIREMTHANGA : Pu Speaker, tlemte in, uar vak lovin ka han sawi ve ango.

Hei wawin nia homi private members resolution hmase ber kan ngaihtuah a hi duh anga rawn amend a nih hnush, heti laiah amended form in kan motion neitu in a rawn move a. Heti hi chuan min pass pui ngei turah kan ngai a, kan hlim em om a. In amend a kha sawi pawh kane sawisol ngam lova min pass pui ngei kan beiseina avangin in duh ang taka in amend tawh hnu pawha min la pass pui leh si loh phei chuan a mak awm ang reng khaup mai a. Pass tlan kan beisei hlo a ni.

Awle, homi Land Use Policy tih hi a guide line te a inziak chhian theih awm chhun ang ang kan chhian kan lo hriat dan chuan jhum cultivation thlak nan soil leh forest te vawn that nan No. 1-ah chuan ni phawtin a lang a. (Speaker : Ngawi rawh aw, amend i tih kha unge ni ? A awm chuan ka dispose hmase ang. Engeri amendment i tih chu ?) Amended form ka khan nichinab pawh khan i rawn chhian chhuak tawh a, in amend a, Speaker : Helai ni lo, kha kha Secretariat thil a ni. A thu kha a danglam miah lova a tum pawh a ti nep chuang lova) A ni maw ! Amended form a i rawn chhian, ka rawn chhian chhuah kha a soi si a, in amend ah ka ngaihtuah mai a. Amend loh chu amended form chu awm dawn lovah ka ngai a. Chuwang zawk a ni a. Pu Speaker, a nih correction chauh a lo ni maw ?

Awle, chu bakah chuan jhum cultivation a kan eizawna tihbo a eizawna tha zawk leh ngelnghet zawk mipuiin an neih theih nan thil pahnih a awm a ni. No. 1 ah chuan soil leh forest vawn thatna, van himna yih kha nichinab kan Minister zahawm tek khan Chiang takin a rawn sawi tawh a. Khami thil pahnih kha ho land use policy hian a tum ni angin ziah pawh a inziak a, chu chu a awm ang ang kan chhian a ni. Tunah kimchang zawk hi buatsaih mek a ni e an la ti a. Chu chu chhian la awm lo niam tak a ni a. Engpawhnise a nih ang ang hian a zawk awm ang han chhian hian kan Chiang thawkhat viavin a lang a. In hre lo, in Chiang lo, min rawn zawt rawh u ke lo zirtir ang che u, tih em om pawh kha, heti laiah a zawk awm ang ang bak kha chu dik tak chuan sawi vak tur pawh in hriat ka ring chuang lova.

Awle, hei hi nichina kan sawi angin leh nimin lama kan Minister in-charge sawi angin base line survey a awm a, homi selection tihna atan tih kha a sawi a. Khami base line survey an tin dan tek erawh chu kan la ngai thiam thla lova. IRDP atana base line survey ang chi khan em ni survey an siam ? tih a lo sawi Chiang lova. Tuna kan Industry Minister in a rawn sawi ang kha a sawi Chiang vak lova, a hmanhmawh deuh bawh a. IRDP a base line survey nen hian chuan a danglam daih mai dawn niin a sawi atangin ka lo understand a. A dik em ka hre lova. Engpawhnise la chi dang a nih chuan an survey dan pawh dai sang a ni a, chu chu a hrih fiahna kan la dawn loh chu a ni tur a ni a. Kan hriat theuh angin IRDP ah chuan poorest of the poor ten dawn kanna an dawn theihna tura below poverty line-a ni tute hi nge tih hriat chhuahna tura survey a ni a. Chung ang deuh turah chuan kan hriat angin leh member zahawm tak takten an sawi tawh angin ho land use policy atan hian Government of India

in exclusively in pawisa churawn pek a nei lo a ni. IRDP atan te, NREP atan te, famine relief fund scheme atan te chuan Mizoram budget pawn lam atangin Central sorkarin pawisa arawn pe a. Amaherawhchu land use policy atan erawh chuan a nei lo niin a lang a. Chuvangin heti laiah Development Department te atangin fund kha kan -pawt khawm ta a, pawh khawm a nih chu. A pek tur te ah Khan Department in kut nei si lovin political takin kan thlang niaumin kan sawi hona atang khan a lang chho ta a ni, chu chu pek an ni ta a, a pek dan fel loh dan erawh chu repeat tawh lo mai ila. Tichuan department thenkhat chuan development hna an thawhna atan fund an tlachham ta a ni. Tichuan anmahni department in an hna an thawh a, tutengo kan department ah entirnan, an vulh lemah te emaw, vawh vulh lemah emaw tan lo fa a, tanpuina pek a hmasaun thei tur te an department ten an en a, chutiano atanga mi tanpui a tih phurna tur ang chi a kha an nei thei ang a in ngaihna an nei lo thei lo ta a ni. Hemi atan hian DC an pawimawh niin a lang a. DC chuan a AD te hmangin engkim supervision pawh a tam ber chu an ti lo thei lova. Chu chu thil awmdan a ni a. Chu chu ka dem a ni ringawt lova. Department-in helam a hma lak nan a an programme kha a zui thei tawh lova, hai hian hma hran an la ta zawk tihna a ni a. Chumiti tur chuan DC in a AD te hmang a a tih mai a ngai ta a lo ni a. Chuti a lo nih chuan department lamte khan supervision ah pawh kut kuangkuaha thu ang deuhin an in ngai lo thei ta lova. Chuti a nih chuan department lam tan chuan han phur puina tur a awm tawh lo reng reng a ni. Mi an phur lo pawh ni so officer te emaw staff te emaw phur lo pawh ni se, dem vak theih an ni dawn lo a ni.

Tin, thil pakhat helajah hian sawi atana ka chhinchhiah chu forest thu hi a ni a. Kumin 1985-86 a first badge ah chuan voty- ah 1346, Agriculture ah 1554, Soil ah 306, Forest ah 1838, Sericulture ah 74, heng hi family niaum tak a ni a. Chung chu beneficiaries an ni a, Forest hi a tam ber mai a. Zawhna ka siam ang ka ti a. Amaherawhchu nichinah kan Minister in-charge khan arawn sawi a, a sawi atangin ka chiangin ka hria a. A-forestation tih nan mi tute emaw chu he land use policy ah hian pawisa pek an lo awm ta a ni. Miin thing an va vthing ta a, plantation an bei ta a. Tichuan heng forest plantation titute land use policy atanga pawisa hmuge hi onge an tona hlewka awm zui tur? Hoi hian onge ei zawnna ngot a siam ang tih ka lo ngaihtuah buai khawp mai a. Amaherawhchu kan Minister in-charge in arawn sawi ah khih thing tuch turte a lo puitling ang a, chu chu ei zawn nan an hang ang a, an ti a. A aia tha deuhah chuan thing zai turte pawh a ni ang e. Chutiang chu aforrestation tih nan hian chumi kawng hawin pawisa chu pek chhuah niin a lang a. Chuti a nih chuan ram lei lung leh ram hnuai thing vawn thatna kha hoi hian a va thloleh leh lawi awm va. An kit leh vak dawn a ni. Ngaw an siam ang a, chu chu ei zawn nan an hit leh ang a, an thing phun bakah khan a vuak thluk tlin an kit leh ang a. Engo forest humhalh kha a awmzia ni ta? Helajah hian awmzia a awm lo a ni. Chuvangin heng ngaihtuah hian a programme hi in sawi si lova, in sawi atang khan chung chu a lang thei towk a ni mai a. Chutiang awmzia nei lova ram leh a tum ko. 1 kha forest leh soil vawn that tih a kha chu he aforrestation programme hi chuan a kawt ta lo reng reng a. A beneficiaries tam

berna a ni bauk si a, fund pawh a tem ber a. Forest Department hian pawisa pawh an thawh tem ber a. Chung chu thil awmdan a nih avangin a ching khawp mai a. Hoi hian a tum chu nichina kan member zehawm takin pawh angin a buk thloh in a thleh a ni a tih kha a dik khawp maiin ka hria a. Chuvang chuan helaiah hian ngun taka ngaihtuah a tul a. Chuvangin a hramling liauva Government of India in Land Use Policy atan hian Mizoram budget chung a mi ni lo, pawh lam atang pawisa a rawn thawh theih a. Chumi atanga hung hi buatsaih a nih loh chuan tuna kan development department bona programme an lo duan tawh Government of India, Planning Commission pawhin pawisa a lo pek tawhna kha hoi hian a supercede ta vek mai lo yhoi lova. Chuvangin kan ram development helaiah hian a kal dawn lo a ni. Hung department dangte pawisa an khawmna piah lam a mite chu an kal ngain a kal tur an kal ngain a ni tur a ni a. Assherawhchu hung department pawisa pawh khawmna atang te hian chutiang chu a dihmun a nih avangin engmah a thawh theih dawn ta lo a ni a, a tha lo hlo a ni.

Tin, hoi hi hutianga a kal chuan sorkar pawisa awl ai taka Sorkar in programme a siam ang ni lova, somna kawng a ni ringwt mai a ni. Chu chu a tha lo loh zual a ni. Ka lawm o.

SPEAKER : Awle, kan sawi tawh tak tak chuang lo mai thei a. Kan ngaihtlak atang Khan Minister in-charge in han khai-khaum so. Chumi hnuah a mover kha minute 5 engemaw thil sawi vak tawh lovin clarification awm ngaite (Pu C.L. Ruala : Engemaw tlem hrihfiah deuh a la ngai a. Pu Speaker, tlemte in khelai Forest chungchang thu kha) Ngawi rawn u, a nih loh Forest Minister a ni a, thing chu forest thil clarify tul deuh bik kha a awm a. Ho thil hi a ngaihnawm hlo mai a, resolution ka hriat tawh ah ngaihnawm ber a ni a, a pawimawh bauk a, Mizoram mipui tam ber to khawih thil a ni a, chuvangin a thil phal tih pawin ka hria a. In debate pawh a standard a tha ka ti a. Ngaihnawm tak teil tul tak a ni a. Chuvangin hun pawh kan hmang ral lak dawn a ang viau a. A pawh lovah ngai mai ila.

Tuna clarification kha han sawi lawk sela, no lote.

* PU C.L. RUALA MINISTER. Pu Speaker, a forestation ti tute kha kum khatnaah chuan tlem a zawng vah chhiat chu an nei mai thei a. Mahsela khemito khar bi zawn nan tak tak an hman dawn avangin tunah hian inter coping pawh kan ngaihtuah a ni. Tunah mi pakhatin rubber lo chin ta sola, kha rubber hnuafiah kha a ein tak tak hmain rubber a chhawp theih hma in lakhuithoi a chin theih a ni. Ching lovin thingmarcha pawh an ching thei a. Chutiang chuan inter coping a tih theih ta a, kan ngaihtuah mek a.

Tin, chutiangin khami khan a lo vah tawh loh hnuah t a thing kha a duat dawn zawk a. Kum tina hak chhiat kha a bansan chuan, kum tin kum 5 chhung a hal chhiat tur ang kha kan safu thei dawn a ni. Chuvang chuan vat chhe zel tur thova kal kan ni chuang lova.

Tin, tunah eucalyptus pakhatin lo ching te sela a han hnu khan a zuah leh mai a, vawi thum a harvest thei a. Chutiang chuan khamiah khan a ei a zawng tak tak dawn a nih chuan a lo neih kha a bansan hlauh thei dawn a. Chu chu kan thlirpui leh kan tum chu a ni.

Tin, chutih chhung chuan a ei zawng atang khan intercopping a duh ang kha a tih theih dawn bauk a ni. Kha thing a puitlin khan a puitlin hea thing in karah ei tur dang chin theih tur kan ngauhtuah pui a ni. Chu chu tunah lakhuihthoi pawh a ching thei a. Thil dang aieng te pawh a ching thei thova. Chuvang chuan kang kha lo neih bansan nana tih vek a ni.

(SPEAKER : Awlo, Land Use Policy lam sawitu Minister kan ko tawh ang a. Sawi tur tul a tih ang ang rawn sawi sela.

* PU ROKAMLOVA
MINISTER.

Pu Speaker, nangmah ngelin i sawi ang khan hei kan ram tana thil pawimawh tak a kal sual chuan. Tin, member zahawm tak tak ten a dik o ni ngoia an hriat an rawn sawite pawh kha a lo ni tak tak a nih chuan thil pawitak a ni ang a. A kal sual chuan thil tha lo tak a ni thoi a ni reng a. Chu chu House zahawm tak hian dorkar engemaw zat a lo ngaihtuah ta a.

Hemi an tih chhuahna chhan hi kan sawi nual tawh a. Nichina kan hmuh ang khan t kum tin in acre 2 1/2 ram lo atan kan neih ah hian kan thing hal chhiat hi hectre 1 zelah khan 40 MT ral ta anga chhutin leh kum tina acre 100000 kan vah chhiat ah hian thing leh mau te nen belh khawm vokin lei t a hi Kg khat cheng khat ang hua chhutin kum tin acres 360 vel kan ramah hian kan ching chhia a.

(Pu Lalhmingshanga - Pu Speaker, kan LG zahawm takin a sawiah khan lo neih avanga thil chhia kha 1 crore a ti a. Engatinge hetah hian kan Minister-in...) A ziak in an chuan 100 crore a nih ka ring. Kan chhut dan Department chhut dan chuan. Tichuan tuna a fertile soil nana tih phei chuan crore 360 vel hi a ral angah kan ngai a. Kum tina ram thar bawh zel kan nih avang hian acre nuai 52 kan ram neih hi, kum tin acre nuai khat hmang kan nih avangin kum 52 ah chuan kan vat darh vek dawn tihna a ni a. Mizoram loilung hi kan hriat phak chinchah kum za engemaw zat chu kan luh tawh a. Mihring kan lo pun hnom chin leh tun lai hun anga kan hman chin pawh kum 50 a lo ral tak avangin kual khat chu kan lo kual ta rong mai a. Hetiang zela kan kal chuan Forest Department lampang atanga thlir pawhin thlaler tan leh ram chhia a ni dawn niin a lang a. Tunah hian kan buh leh bal...

(PU LALHMINGTHANGA : Pu Speaker, helaiah hetiang hian a ziaak - 'of Mizoram at Rs. 1 crore annually and is deeply concerned about'phek 5-na paragraph 2-na tlar linaah khan mahse hetah member tam takin an sawi tawh a. Lei tha kha a hrongin an sawi a, chuvang chuan lei tha man kha chu hetah hian a sawi tel lova, forest product an sawiah khan 100 crore an ti leh thin a. Kan LG speech ah hian chuan 1 crore a ti tlat a ni) A ni 1 crore vel a ngaih kha, hetah a bu hi Rural Development Department in kan siam ve a. Chumiah chuan 100 crore lai kan ti a. Chuvang chuan kan hisap chu a in ang lo mai a niang chu.

Tunah hian chutiang ang ram chu kan lo ti chhe ta a. He policy hi tunah policy tha tak a ni a. Pu Speaker, kan opposition party te thu lak loh dan atang hian a thu hrim hrim leh a policy aiin chhahh buai vel hi nuah an tih zawng niin ka hria a. Tunah thil tha lampang hi do chi an nih chu kan hro vek a, nimahsela tunah remna leh muanna te an erwi neam tawh lova, land use policy hian tum tum chu beng chheng ang an tih avangin kwang tinzeng in beng chhanna an ngaih-tuah ni berin ka hria a. Chu chu tunah an chet dan ah pawh a lo lang a. A hring an vuah duh danah pawh khan uan pah leh ila in an ti a. Tunah ring lo chung a beng thilte hi lo bawh zui ni ta ilang chuan kan hlawhtling hauh lovang tih ka ring a. Chuvangin an nite leh an vah thinna te leh an zirtir thinah chuan a rin in an ring hlawl lo a nih chuan an rawnaah hian duh chuan belh theih niin ka hria a. Ring lo tan chuan hlawhtlin tumna pawh a awm thei lova. Chakma pawh a awm dawn lova. Hlawhtling lo tur chuan an tih loh mai pawh an rawna anga pawm a ngai em ka hro lova.

Tunah an sawi danah chuan a policy hrim hrim chu tha lo an ti hrempa lova. Aheherawhchu a im-plementation ah hian a tha love tiin an sawi a. Chuta thil pahnih an lak chhuah chu a selection ah pakhatah chuan a ni a.

A pahnihnaah chuan Department hrang hrang pawisa pawh khawm thua hian a ni. Chu chu a thlan dan chungchang an sawi kha chu helaiah member zahawm tak tante pawhin thil thlan a harsac dan an sawi a. Base line survey thu hman ni a kan chuan kha vawlinch kan sawi lar hle a. A chhanna kha a chian chu lo sawi tawh a. 'Government of Mizoram' in a thlang tih hi hetah House-a kan in chhen dan tlangpui a ni a. Minister in a thlang a tiin kan ti ngai lova. Chuti chuan Government of Mizoram in a thlang a, tah chuan a in ngahna te chu hemi DC a mite leh base line survey a mite enin. Tin, report hrang hrang leh an rawn thun belhte en in thlan a ni a. Tum khat ah a daih loh avangin buaina tam tak a awm thei ang tih khan kan in hrihfish tawh a. Chung chu chiang takin kan hrihfish tawh hnu kha a ni a. A ngai kan thun rawn tlat tlat rengin ka hria a. An duh chuan fish tawh awm tak niin ka hria.

Sorkar Bnathawk thlan theih leh theih loh chungchangah hian instruction fel tak siam a ni lova. A policy kan sawi tawh ang khan lo ni mi chhungkaw

60000 te mamawh leh tul nia sorkarin a hriat phuhrukna tura policy a siamah hian sorkar hnathawk lo neite an aum chuan a huap tel tho thih pawh hriatah a tha a. Amaherawhchu tawngkaa in fuihna ah chuan chutiang an aum a nih chuan IRDP kumina hmute an aum a nih chuan thlan lai khan ngaihtuah hman a lo nih loh palh a hming a lo lang a nih chuan nichina an sawi thi tawh thlante pawh kha a hmunah BDO leh AO te pawhin an thai chhe nghal dawn nia tiin inkhawn circuit annexe a inkhawn bik atana koh ah chuan chiang tawk takin mumal takin hrih an ni tawh a. Chutiang chuan tunah an ti mekin ka ring a ni. Chutiang chu a selection chu kan han sawi theih a ni a.

Tin, Department hrang hrang p atanga pawisa lekkhawn chu member zahaum tak takte khan an sawi tawh a. Minister zahaum tak i/c Agriculture leh Forest pawh khan an sawi nual tawh a. He kan hna hi Agriculture leh Forest khawh zual bik a ni a. An hna pawh chumi lam hawi zewng vek a nih avangin an pawisa pawh an thawh hnom a, tin, a thawh kan ti tak na a rural Development hi Rural Agent angin a aum a. Rural Development anga a thawhngah chuan khatiang rawtna te policy te kha a la khawm a, beneficiaries chu a thlang chhuak ta a, department hnenah a pe chhuak leh a, hengte hi in onkawl turte chu a ni e tiin tun tuma 5000 a thlan te khian hrih an ni a, 2900 vel a hmasaa an thlang tawh kan tih ah khan 1984-85 ah khan Department hrang hrangin an mahni in an umzui theih tur ang kha an thlang a, an theih bak a kha an hnutchhiah a, tun tuma erawh chuan tih khawm a la ni a, a khawh ve ve ah pawh thlan dan chungchangah chuan sawisel tur chu a la aum ta thova. Tichuan committee aum leh turah chuan kawng tha loh chik zawka ngaihtuah leh pawh chu thil tha niin ka ting a. Chu chu Department pawhin a bawh zui tha hlein ka hria.

Kan sawi tak ang khan he policy hi a tulna avanga tih a ni, Kan tam hi homi thing leh mau a a hausaknate a lei thatna te malsaumna kan dawnna bul ber tura kan ngaih ber hi hnuai lam leh chung lamah tunah hian nitin kan ei zawn pahin ti chhe nek kan ni a. Homi kawngah ral mai hlauhawmin kan aum avangin tunah hian bul kan tan loh chuan tiin a tirah pawisa siam sa pawh nei vak lovin kan tan reng a ni. Chu chu sawisel kan hlawnate pawh a ni deuh aum a. Chumi chungchang thu chu a bute siamig kan ziak a. Planning Commission ah te Prime Minister te hnenah pawh kan theh lut a. A kum hmasa berah chuan hei post creation band avangin pawisa tam takte in hmanng kher lovang a. Chuvangin plan money chu engtin tin emaw lo sawi khawm mai ula tiin min hrih a. Nikum lamah chuan he environment tih lampangah hian he land use policy bik atan hian token fund ang deuh hlekin 1 crore min dah sak a. Chung bakah chuan Department hrang hrangah khan land use a hman tur tiin recommendation planning commission khan a siam vek a.

Tin, chu bakah pawh chuan khang kan lehkha theh luh te kha mi thiam te ruaiin uluk zawkin phak engemaw zat siamin kan theh lut a, planning minister in tunah hian a khel mek a. A private secretary pawh Mizoramah chuan an rawn tir tawh a. A ni a tawng duh deuh nge sorkar thu ang chuan kan la ngai thei bik love, i ngaihnan mai mai han sawi teh kan tih chuan engpawhnise'

6 or 7 crore te hi chu kum tin chuan phal aum tak tih thute chu a sawi a. Chungte avang chuan he policy hi keini chuan mi thiamte kan exam tir a, kan thoh luhna leh leh kan sawi honaah pawh tuman in thang nang tur a ni e, in rothoihna tur a ni e, inthlang sual rem rum ang a, chhiatnaah a hruai lut ang che u tih min hrilh loh avangin tha tur ah kan ngai a, nichina sawi ang khan tuman an hrilh lo reng tak a, sor- kar hnathawkte thingtlanga kan hmuhte reng rengin hoi zet chu a fuh dawn e an lo tih thin avangin he motion hi chu keini chuan pah rualah kan ngai lova. A pah duh bikte an aum chuan 'ni e nichina an rawt tawh ang khan ong engingge chhinchhiah bikte a aum chuan a pawh chuang lova, hlawhtlin loh leh chhiat phah hlau tan chuan tih luh loh lha tha zawka rinna mimal tak pawhin kei chuan ka nai nghe nghe a ni.

Tuna kan kal den turah chuan Development commissioner hi sorkar lamah chuan Department bang hrang khaikhaum tu tur a ni a. Chumi chuan District-a an va chetma ah khan DC pathumte kha kan nai hi tunah pawh lawmthu House- ah hian sawi hial ka duh a. Mizo an nih avang pawh aniang he thil bikah hian thahnem an ngai em emin khaw tin deuh thaw an gang a, Lunglei phei chu ka fang chhuak tawh a ti in ka hria a. Kan Aizawl DC pawh hi ka hriat dan chuan chawhnuah emaw, chhun a ni emaw vek chhuakin a kal thin a. Thian angte private deuh taka kan inkawmaah pawh hoi zawng a fuh dawn e tih hi kan DC pathumte report kan dawn thin da a ni bawk a. Chuvangin hong zawng zawng kan noih a kan hriat atang hian a tha lo zawng sawi hi a aum lova. Chuvangin he policy hi tih hlawhtlin tur atan cabinet meuh i a lo siam tawh a. Tin, khulama mi thiam kan rawi-hte pawhin tha turah min ngaihpu a, kawng min dap sak a, plan money ah lo hmang rih ula tiin emaw. Tin, Department pawisa pawh helam kawv vek alawm tiin min lo sarmak sak ta zawk a. Khulam pang kan rawn pawhin tha an ti a. Holainh kan beng atangin tha an ti a. Tin, mipui lamjang pawhin kan daw n chinah chuan tha an la tih avang hian department lam chuan he policy hi uar taka bawhzui zel tha a ti a. Chu chu he House hnenah hian kan thlen ve a ni a.

SPEAKER : Aule, a mover kha minute 5 kan pe ang a. Ko nghal ang.

PU K. BIAKCHUNGNUNGA : Pu Speaker, ka lawm e. Hoi ka resolution ah khan engemaw laiah politic nguk ab, deuh taka kal te a aum thin a, a vandui talak nsein ka hria a. Ka rilru a a lan dan tak chuan hoi hi Sorkar pawhin mip ui tana thil tha a duhna atangin aghihna lai kha chu ka appreciate em em a ni a. Chutiang tak chuan min ngaihtuah pui nawn leh pawh ka duh tak tak a. Tih tawp ni rash se tia ka ngenna chhan pawh kha chhan leh vang a nihzia pawh chiang takin ka rawn tar lang a, a hlawhtling tha thei lo mai thei a ni, heng avang hian ka ti a. Chu chuan sawi a hlawh vak lo hle a.

Tin, tuna kan Minister sawitu zahawm tak ina tha ti lo leh thil hlawhaw a ngai kha chuan ti lo mai se ti ant zawng an ti pheh kha chu ka rilru a na leh zual a. Mipui tan rawng kan bawl a ni a. kan hmangaihte chuan tha lo deuh nia kan hriat pawh tha nia kan hriat tlat chuan an nin tha lo pawh ti se, E, ti hram teh u ti a in ngenna lam hawi zawng tur emaw ka tih lai khan a ti tau zawngin ti lo mai ta che u in duh loh na na na chho tura in ngaih chuan in mite pe lo mai ang hmiang tih thlong kha chu kan mite in pe dawn lo a nih chuan Zoramah hian pok tur in nei lo, Zoram hi kan mite an ni a. In mite phai tuat a hi mai a, a bak a awm reng reng lo. Chuvangin he-tiang zawnga ka resolution te min lak sak hi ka thinur viau tak tak a ni, awmia a nei lo lutuk, in vau nan a ni maw kan hman? In pangpar thi hi in va chhuang, in chapo lutuk a ni lo maw Pu Speaker? An chapo kan ti teh ang, Engatinge mip vau nghal mai chu le? Rilru tha taka khaw ong hmuh tir tuma kan beihna kha khati mai mai an han ti hi dik lo ka ti a. In mite min tih chuan kan mite chu Zoram amite hi an ni a. An ni in mite an nei ve a nih chuan Zorama awm lo hmun dangah zawn a ngai ang.

Tichuan a scheme hi ka sawi tawh ang khan hman hmawhna chi a ni lova, hei hi scheme lian a ni a, muang deuhin i ti ang u survey te pawh hi uluk tak in i ti ang. Selection pawh tha takin mipui huap ngeiin ti teh ang kan han ti ngawih ngawih a ni a. Chumi laia pek ve loh tura min han vau kha ka rilru a na ang reng hle a ni, Ti uluk hek lo che i. In policy khan engmah awmia a nei lo a ni. A policy hrim hrim chu ka sawi tih phat atangin mipui thatna tura in tihna lai chu ka appreciate reng a ni. Chuvangin lak kawih loh ni ila ka duh hle.

Tin, planning commission hian appreciate pui in tih hi an hre chiang lo a ni. Survey mimal lo a thlan dan mimal lovin kal tih hre ngat se hei hi an hria ang tih pawh a hlawhawm a, hei hi hriattir ni rawh se. Rem an ti lovang.

Tin, kan Agriculture Minister khan engemaw in beihna ang lek lek khan a ti kha ka rilru a na deuh hlek bawk a. A cheng leh hman ni pawh khen. "PC tih chhiat hi siam that a ngai a, kan buai a ni," te an ti a, kha-tiang atan khan ka resolution hi ka ui deuh hlek a. Khatiang tluk bawka inchhan let tur a nih ngai chuan Zoram mipui hian PC sorkar tih chhiat hi siamtha thei khaupa ropuan an hmu che u em aw ka ti che u a. Awle, Shah Jahana khan a lo sa tha lo em a, Taj Mahal chu cement nen zuk siamtha teh u, chu ang chu a ni. Chuvangin khatiang kha chu a ni lo viau a, Taj Mahal siamtha tura thawk chhuak nen teh khin in nih chu.

Tin, Agriculture, Vety tih schme aumsa kha kan zuk hmang mai a. Department pawisa kan lo chhuak lo tih kha a dik lo reng reng a ni. Tin, a lo dik loh teh reng pawhin zuk lak chhuah khan an kal ngilpui ni lovin an kal kawih pui zawk a ni a, a chhan chu Pu Speaker, ti hian chiang takin a sawi theih. Kum khetch Rs. 3000/- kum 5 chhungin Rs. 15,000/- tih ang tanpina an pe a ni a. Hetah hian Forest leh Agriculture zawng zawngah chuan kum khata Rs. 3000/- chu a tha mai thei. Mahso kum khata Rs.

3000/- beneficiaries pakhat hnena i pek chuan bawng vulh tur a nih chuan vauk te a lei ang a, a lei tam viau thei pawh a ni thei. Bawng hi a to si a, bawng pakhat ni Rs. 6000/- to a ni daih si a. Chuti Rs. 3000/- chuan bawng bungte an lei dawn em ni ? Chuvangin Rs. 3000/- ka pe ang han tihte hi a dik thei lo reng reng. Hoi hian a scheme fel loh zia a tilang, bawng bung an vulh dawn a ni.

Chuvangin Zoram mipui thei na zawk tur he policy hi tih a nih chuan hlawh chhamna chhiat loh zualna thlen theihna a ni a. Chhiat loh zualna a kal love, uluk zawka hei hi a hrante a inbuatsaih loh a, awmze nei take he thil hi kan sorker hian a kalpui ka duh avangin ho ka resolution hi min pass pui turin ka han ngon a ni e. Ka lawm e.

SPEAKER : Engti zawng pawhin kal sola, vawinah kan discussion hi kan ram tan tangkai phain ka hria a, a lawmaum hlein ka hria. Kan resolution a chu hei hi a ni a -

"In view of the method of implementation of the so-called land use policy of the Government of Mizoram which is detrimental to the economic welfare of the people and the way of pulling financial resources for its implementation from various Government Departments creating a great hindrance to the smooth flow of the implementation of departmental programme, this House resolves that the policy and implementation of land use policy as practised in Mizoram should be abandoned immediately" tih a ni a. He resolution hi a the e, a dik a ni, chuvangin kan pass tur a ni tih ngaihda nei chuan, 'Remti' ti rawh u lo.

A tul love, hoi hi chu hoti zawnga kal a la dik rih ang tih ngaihda nei chuan 'remti lo' ti rawh u lo.

In hneh deuh zawk maw. Awlo, a resolution chu a tha a nih chu.

Awlo, Pu R.Lalawia resolution pahnihna kan ko nghal ang.

PU R.LALAWIA : Pu Speaker, hei ka resolution ho House move theia mih siam avang hian ka lawm tak mouh a ni. Ka lo thlaphang lutuk deuh a, nichin pawh khan hun vak lovah khan ka move loh hlauvin kan ding ve ngawt a.

Hei ka resolution hi kan hnam tan a pawimawh tak mouh a, a pawimawh dan hi vawin ni hian ka a sawi chhuak thiam lovang tih ka hlau viau a. Kan Minister zahawm tak Pu R.Thangliana te, kan MLA

zahawm tak Pu K. Biakchungnunga to hmui hauh hial ka chak a. Mahse thil, theih a ni bik si lova. A pawimawh dan erawh chu min hriatpui vekin ka ring a. Hei ka resolution chu -

"This Assembly is of the opinion that detection and deportation of foreigners in Mizoram should be regulated in line with the Assam accord basing the act of year already agreed in the case of that state by the Union Government" tih chu vawina ka resolution a ni a.

Chu chu heng hi kan ram politics atan leh kan mipuite, nakin zela thang ther aum chho zel tur a tan te, vawin nia ka resolution hi kan theihngilh ngai hauh lo tur a ni tih chu thil chiang tak a ni. Chuti- tiang chu enge a chianna om em ? tih kan ngaihtuah chuan hnamtin mai hian a hnam dang chim ral assimilation hi kan hlau em em theuh a. Vawin ni a khawvola ram ropui ber America ram meuh pawh khu an fimkhur em em a ni. Khuti khawp khuan anmahni hnam America heng mite khu an hlang (sap leh minga) pawh lam ramdang atanga va chim buai turte zin tur ringawt tan pawh a khirh em em mai a ni. Chu chu hnam changchang zawkte hian an lo hmu chiang em em mai a. Keini hi chu kan khawsa nawk nawk a. A lohlahah chuan kan ngaimawh hi a la hnam viau a ni. Mahse politics ah kan ramah 1966 atangin kan aumdanah te lungawi tawk lohna kan dinhmun ahte lungaw tawk lohna a lo chhuak ta a. Thisen chhuahna in a lo khat ta a. Kan fam chu mangangin a rum a, mi tam tak kan nu leh pate kan hlauh a, kan fate kan hloh a, kan ute kan hloh a, thisenin a lo luang zo ta a. Chutiangin kan in leh lote kan hloh a, khaw sawikhawm ten kan aum a, a then mi ramah te kan tlan darh a. Meghalaya ah te Manipur-ah te kan tlan darh a, mahse kan tlan na kha kan ram a ni si lova. Rei lote ah chuan kan ram chu kan ngai a, kan tap a, kir leh kan chak a. Chutiangin mangang takin kan rilru ah a aum a, kan ramah harsatna lian pui mai kan nei si a. Kan nitin oi zawna kawngah te zalen taka thawma kan nei lova. Tiang chuan tamna ten min nuai leh zel a. Ram dinhmunah hian ram mipuite chop leh nek chop kan aum chuan ram in a tuar a. Thangthar lokal zelte hian an tuar tak tak a ni. Chutiang chuan 1966 atanga 1970 vel chhung kha chu kan ram leilung lush namg lo mi tam tak Mizo zingah pawh kan aum a nih kha. Chutih chhung chuan hnam dang mite pawh kan ramah hian an zin lut tlem a, midang ang a ni pha lova. Ram dang atanga lollut. pawh an tlem a ni. Mahsela 1971 ah Khan North Eastern Area Reorganisation Act, 1971 kha a lo aum ta a. Chumi a lo aum takah chuan District pathum chhim lam ah siam thar kan lo nei a, Chakma District Council te a piang ta a. Chung atang chuan kan rama Chakma aum sate kan hua ni lovin ram dang Bangladesh atang ten Chakma an lo lut thar ta a. Chutiangin Chakma chu an lo pung tual tual a, rambuai hma kan electoral roll a Chakma aum leh vawin ni a Chakma aumte chu a let engemaw zatin a lo tam ta a ni. Chu chu kan ram politician te, kan ram hruaitute hian tuman in duh lo a ni. Politics ah chuan party inbeihnan chuan han hmang thin bawk mah ula, in thinlung chhungril chuan kan ram chu in khawngaih, kei aini in hre chiang daih.

- SPEAKER : Engtingge niang ? Dar 4:00 a ni a, engemaw deliberation erawh chu ni dangah chhunzawm turin kan tih mai loh chuan.
- PU J.THANGHUAMA : Vawinah resolution pasarih a awm a, ni khatah pakhat kan tih chuan, Friday pahnih chauh kan nei a, a pathumna chu Good Friday a ni a. Chuvangin ni khata pakhat atanga pathum chauh kan kal hkan dawn a ni. Chuvangin zan dar 8:00 thleng a kal a tul leh min kalpui mai rawh.
- PU SAINGHAKA : Mahse vawinah chuan ro khawlhna dang kan nei ve a, chuvangin a extend theih loh keini lam chuan
- SPEAKER : Ngawi rawh u chuti chu a a move-tu hi chuan zo, hrim hrim sola, a sawi laklawh a, chu chu ti tlang sola. A sawi zawhah chuan kan bang mai dawn ngo kan chhunzawm dawn tih kha chu ngaihdan pahnih a awm tlat mai a.
- PU R.THANGLIANA : Pu Speaker, hei a hun pek bakah MINISTER. minute 15 dangte la la dawn a nih te pheih chuan kan programme kan tlat ve tep a ni mai a, Chuvangin move zo sela. Amaherawhchu hun ren deuhin. Chutah chawh ila kan chhunzawm mai ang a. Chuti lo chuan kan tel love in tih theih ngawt loh chuan kan tel thei tlat lo.
- PU J.THANGHUAMA : Warrant min hawh mai rawh, a awm aumin kan sawi mai ang.
- SPEAKER : Chuti ringawtin a kal theih loh. Dan angin ka kal ang. Hmanah pawh khan a hmasa borah kan ti mang lova. A ni hnihnaah kan tih vak mai a, kan zawh mai kha maw. Chuvangin thlaphang em em lo ila.
- Tuna move hi chu re-balloting ah khan a tel lo. Kan chhunzawm ang. A dang erawh chu reballoting a ngai ang a. Chuvangin move zo sela (Pumr.Lalawia - Pu

Speaker, ka taup mai zawk ange. A kar lak kan chawh hi a kar leh Zirtawpni daih a ni a. Engomaw member zahawm takte rilru pawh han ngaihtuah leh dawn ni-an khon ka thil sawi duhte pawh han hriat thar tir ve leh kang a pawimawh hle bawk a. A nih ka chhunzawm leh pek si ange) A nih leh han moye zo phawt rawh se aw. Tichuan kan taup dawn nia.

PU R. LALAWIA : Minute 5 lai chu kan han hlauh ta a. Pu Speaker, ka lawm o.

Hetianga chuan kan ramah hian Chakma mai ni lovin Nepali te pawh tam tak an rawn lut chno ve leh tawh a. Chuvangin ven tur hi kan ngah tial tial ta a ni. Hetianga kan ramah hnam dangte an rawn loh tam tak na hi chu 1971 hnu lam atang khan a zual bik a ni, Chuvangin kan thenawm Meghalaya ah te chuan an lo in veng thiam tawh lo a, Nepali tam tak mai an lo nei a. Phai mi vai kan tihte an lo nei bawk si a. Tunlai pawhin an buaipui a, student hoten nawrhna hrang hrang an siam a, an Sorkar Congress pawh khuan Assam Accord hman ve khu an encourage em em a ni. Tiang chuan an buaipui mek a ni.

Tin, Sikkim lamte kan thlir chuan Sikkimese ho chu hmuh tur pawh an aum tawh lova, an ramah ro an rel thei tawh lova. Nepali hovin an dip ral tawh a ni. Chu dinhmuh chu kan hnam kan tlem em avang hian rei lote ah hian kan taung ve thei tlat mai a ni. Chu chu kan thlir vang vang hian engtingge kan tih ang? Engtingginge kan ram hruaitute hian tan kan lak ang tih hka vawih ni hian kan ngaihtuah tur a ni ta a. Ka sawi ang khan kan ram party hrang hrang hruaitute hian in vei em em theuh a ni. Mahse a tih dan kawng a damdawi erawh chu kan la hmu chhuak lo a ni. Chuvangin in puh mawhnan kan hman a. Inthlan dawn chuan chumi lam chuan chuti khati kan inti tawn a. A damdawi kan hmuh chhuah loh vang mai a ni. Vanneih thlak takin kan thenawm state ah Assam zirilaite chuan nunna tam tak chanin thisen tam tak luangin he thil, an ram atanga foreigner lo lut, anmahni Assamese ti daltu, an fate hne hmuh loh tirtu, an fate chan ai cheng zotu, an fate ei ai ei zotu, chutiang ang chu hnuah chhuah theihna dan Central Sorkar non in-rem in an lo siam ta a. A ropui em em in ka hria. Chu chu kan Central Sorkarin Assam mite hnenah a tih theih chuan engginge Mizoram tan pawh kan hman theih loh bik ang? Hetianga hian sil an lo sut kuak tak siah chuan he ka resolution hi a kum bi chu thla khat 4 January 1971 inkara mite chu electoral roll atanga pah vek tur an ni ta a ni.

Ka sawi tak ang khan 1966 atanga 1971 March 25 inkarah hi chuan kan ramah hian hnawksak tham foreigner lo, lut an awmin kei chuan ka hro lova. Nichina kan sawi tak ang khan North Eastern Area Re-organisation Act, 1971 a lo awm a, Chakma District Council te a pian tak hnu chuan a dik takin Chakma an pun dan chu chanchinbu hrang hrangah kan hmu thin a. A let tam takin ram buai hma aia an pung ta a. Mihring khatiang khan a pian chhuah

theih hauh loh tih chu a hre chiangtu chu Mizo mipuite vek kan ni. Chuvang chuan helala Assam inremna ang hi kan lo hmang ve a, a cut of year hi kan lo hman ve chuan kan electoral roll atang ten kan census atang ten fil takin chhui chhuah theih dan kawng kan nei a ni.

Hei, tun hnu han sawi loh hlek ila, Hman Assembly hmasa khan he thil bawk hi ka pu lut tawh a, Mahse balloting ah khan ka chang pha ta love. Ka chan phak ka resolution dang nen khan thlak ka dil ngar ngar che u a, mahse a remchang ta love. Vanneih thlak tak maiin vawii niah ka lo chang ve ta hlah mai a ni. Chu chu thil vanneih thlak tak niin ka hria. Chumi rin chhan chuan kan ruling party te khan Assembly an han nei a. Chutah chuan he Assam Accord ang hi kan rama hman ve turin an han pass leh ta tlat mai bawk a. Tumah pawh hian a move pawh hi ka chan ka ring love. Ruling party Assombly ina khatiang mawh a an lo pass tawh kha chu House thutkhaum hmasa berah chuan ruling party atangin ha resolution hi official a an rawn put luh ka lo neisei a ni, Mahse remna leh r muanna avangten eng engemaw inpuh mawna te awmin loh theih ang tauka hna thawkin kan Chief Minister te pawh an buai em em a. An theihghilh palh pawh a ni mai theih a. Party Assembly pawh an pass kha he kan Ministry lam hian a ngai pawimawh lo zawk em ni tihte pawhin a ngaihtuah thoih a. Mahse chutiang chu puh phal chi turah chuan ka ngai love. Tiang chuan eng-pawhnise he resolution hi a lan dan chuan Mizo mipui hian tul kan ti a, kan House-a rorelna sang ber hian a pass hi Mizo mipui hian an duh a ni. Thangthar lokal tur te kan thlii chuan vawiin niah hian damna tel tak damdawi kan hmuh chhuah sa loh chuan hemi nawr hian Assam zirlate ang khaan kan thangthar nula leh tlangvalto hian thisen tam tak hi an la seng ve ang tih hi ka ring tlat a ni. Chuvang chuan ramdang kan ni love, Mizoram chauh hi kan ram a ni, sawi tur dang reng reng kan nei lo. Kan sawi tak ang khan nuam zuka kan rin state dangah te va kal thin mah ila kan thinlung hi a hlim reng reng lo. Khawvel tam ropui ber America ramah te cheng mah ila kan thinlung a hlim reng reng lo. Kan lung a leng em em a, mahni rama kir leh hi kan chak vek a ni. Chuvang chuan Mizote hi mi hlim ten an sawi thin ang hian. Israel fate ang kan ni a, kan ram leilung hi kan ngaina ve tlat. Tichuan danglam taka siam niin Mizote hian an inhre tlat a ni.

Nimina sap chanchinbua ka hmuh phoi chu Pi Lalsangzuali kha khawvela sam sei ber record kha a khum zan a ni, Thil hote ang chuan a lang a, helala piang ve mai kha khawvel record khum zanin sam a nei tlat mai. Chutiang chuan Mizo hi danglam tak kan ni a. Chuvang chuan danglamna engemaw tak hi chu kan nei tlat a ni. Pathian pawhin he kawngah hian min tanpui ka ring a. Nimahsela ka hhat dan chuan kan ruling party hian min pass pui loh hial an tum niin ka hria a. Leh laman chuan Assembly ahte pawh an pass lawi bawk si a, ngaihtuah mah te pawh an nei ve palh a nih ka ring. Vawina hun laklawh tak mai kan chang te, in ngaihtuah thatna hun tur an nei leh dawn tlat mai hi Pathian remruat a ni lovin ka ring thoi tlat lo, zanin tlai ngoiah hian an thukhaum dawn tlat. Chuvangin thil hi mak tak hian a lo kal tlat zel a. Engahnge maw kan hnam himna chu kan pass mai loh eng? Tu hian nge

maw min dal ang lo ? Tu huatthu ngo maw ni lo ? Central Sorkar lahin a phal tawh si a. Chuvangin he ka resolution hi ngun takin mut hmunah min rawn ngaihtuahpui teh u. In sawi ve hunah pawh a dik lo a ni in tih chuan chiang takin a that loh dan chu min rawn hrilhfiah rawh u, min hrilhfiah ngam rawh u. Chuti ni lova tuten emaw min sawisel chuan (Speaker : Midang sawi hmain i hnial ngah vak mai a, i move dawn alawm) Ka hnial lo, kan hnial lohzia chu ka thusawi kha ngai chiang ula, Pu Speaker, in hre khawp ang. Ka thahnem ngaih vena a ni a. Chuvangin he-laia member thenkhat hmel ka hmuh hian a lungngaih thlak a, nimahsela thu dik hre leh mai tur hmel mi thenkhat ka hmuhte erawh hi chuan min tilawm a ni. Sawiselna tur hre tak tak si lova, engemaw tia Independent MLA a nia tih vanga hnawl tumna rilru ta hian min tibuai hneh bawk a, thu sawite pawh kan thiam loh phah a. A kar lakah lah chuan min chawhtir leh a, kan tui dawn chawh a. Speaker ber lah chuan min han tibuai leh bawk si a. Pu Speaker, i huatthu suhah, a hreawm viau a ni. Mai hi a hreawm khawp mai. Mahse ka thusawi hi, ka thil tih hi hnam tan a ni a, in la hria ang nakin hnuah, ngaihtuah chiang teh u, min pass pui tur a ni ang. Chuvangin he thu hi ngun taka min ngaihtuah pui hi ka duh a, pass leh palh mai ka hlah avangin kan uar ve deuh bawk a ni, hriat ruknate hi a awm thin si a. Chuvangin hriat ruknate hian min ti lungngai thin a. Hreawm duh tak chu a ni, Kan Minister zahawm takte lah chuan a the lovang ti ni lovin tuten emaw mimal beih nan an la hmang ang tih hlahvung ringawti ti timah an lo sawi mawi ve a.

Vawin ni chu tute huatthu emaw kan sawi leh lek lek pek a. In huatthu hi a lohlam leh-lam hian ka sawi thang ropui si a. Ka resolution han pass tir chu ka duh bawk si cho i a. Mahse thu dik a nihne atang zawkin he thu hi kan hman tan a that em avang hian min pass pui hram hi ka beisoi tlat a, ka ngun tlat che u a ni, Sawi dan pawh ka thiam tawh lo. Ka ngan ngawr ngawr che u a. Zan inah mut hmunah min ngaihtuahpui teh u. In chhia leh tha hriatna dik tak khan. Chuvang chuan a tam zawk lam hian Pu Speaker, tih zel an rem ti love, thutkhawmna an nei dawn a. An rawn ngaihtuah nawn leh ngoi ka ring a. An Assembly thute a ni bawk a. Pu Speaker, chuvang chuan kei chu a hun thuah thu nei pha ka ni lova. Engpawhnise ka resolution hi uluk takin min ngaihtuahpui ve ula. Hmanah khan Bangladesh boundary fencing chung-changah hemi issue ah tho khan resolution ka nei tawh a. Min pass pui lo na a kan ngaihtuah dawn nis ti a in teleggraph thawn khan hna a thawk ta tlat mai a. Message kan thawn tih kan Chief Minister zahawm takin a hrilhfiah a. Chumi hnuah kar C.M. to Delhi an zuk kal a, hengte pawh hung tur a lo nih maite kha a laumawm a. Khatiang khan thil tha chu a rawn irh chhuak khal leh thin a.

Tun tum erawh chu khathiang anga lo tih lawkte a aum teh chiam kan hro lo a. Pass ngai ka ring a. Min pass pui hram turin ka member puite Pu Speaker, ka rawn ngan rawr leh a ni e. Ka lawm e.

SPEAKER :

A rawn move ta a. Nei a move zo a. Hemi a move hi cho kang chhunawn tur a ni mai a hun la ah. Chuvangin tunah tih zel loh kha rawt in awn tlat mai a. Vawinah pathum emaw kan zawh dawn ka ti a. Mahse kan thu hma-sa kha a pawinawh sa ta kher a. He-laiah khan concentrate zo a. Ti hi kan ni ta.

PU J. THANGHUAMA :

Pu speaker, tlem sawi ka duh a. Resolution kha rebaloting loh kha a awn ta a ni. Khaai leh tunah pakhat kan zo hmen chauh a, paruk a la awn ta a. Khani paruk te leh kan resolution la tel lote kha kan khaikhawh leh chuan, a nih loh chuan Friday chauh kha private tan a ni si a. Tunah kha hma pakhat chauh kan nei leh a. A leh pet chu Good Friday lo khan engdaw ni hman min tihsak a nih loh vek chuan nimkhata pakhat tih loh chuan.

SPEAKER :

Resolution hi a in ang vek lo. A hun lak dan chu, khalai chu a sawi lawk vak theih loh. Kan han sawi ang a kan hre cho dawn nia, zawh kan tun dawn a ni. Engpawhise a lo lut zawng a kha chu tih leh hunah.

Tunah chhunawn zel ang ti apiang ban phar teh u.

PU ZAIREMTHANGA :

Pu Speaker, inkawh chu kal zel mai se a tha mai lawa ni ?

SPEAKER :

Treasury bench awa lovin session a neih theih loh. A dan kha a awn alawm. Chuti lo chu tunah dan angin ka kal dawn a. Pu Zairem rawn rawt kha a rawt a ni mai a. Mahse a dan kha kan hmit awa a ni.

PU LALHREINGTHANGA :

Pu Speaker, rawt pakhat kha kan member zahawh tawh a move tawh kha chu kan zo thei mai lawa ni ? Kan rluang party lo rawn meeting te nei dawn path ni se a chep sa on lo mai thei a. Chu chawh vite a lak theih mai lawa ni ?

SPEAKER : Ngawi rawh u. Khatia non inhnial chhung khan hun a kal zel si a. Hei hun a pel tlat a. Chuvangin decision siam a ncai tlat alawm. Chuvangin kal mai duk hia chu ban phar teh u.

PU LALMMINGTHANGA : Pu Speaker, ngawi rawh aw. Khami hnaa khan buk mai ilang, kan zo thei mai-thei a nia, minute 4/5 chhung lek hian. Chami hnaah chuan tih zel leh zel leh hia chu ti ta mai ila.

SPEAKER : A zawh chu buk tur a ni maw ? In sawi dan tur ka hre si lova. Sawi tur in tam leh si khan hun kan pel a, House ngaihnan ka la a ni mai.

A nih leh i chawl tih mai ang. Tih leh hnaah kan chhonzawm ang a. Zawh hnaa pawh kan tua ang chu. Chu lampang awn che engzatnge in nih ? Ban phar teh u.

A nih leh tih zel duk han phar ve teh u.

House consent a nih chuan tunah tawp ila. Tih leh hnaah kan chhonzawm ang chu. A move-tu khan a move tawh bawh a. Ni 17, ihawhtan dar 10:30 -ah kan inkhaw: leh ang.

*Speech not corrected.

Meeting adjourned at 4:20 P.M.

L.C.THANGA
Secretary.

.....273/-